

Flexible Policy and Routing Support

In this section:

- Overview
- Flexible Policy and Routing Enhancements for PSX

i Related articles:

- [Configuring Dynamic Policies and Routing Using Flexible Policy and Routing Feature](#)
- [System Provisioning - SIP Adaptor \(SMM\) Profile](#)
- [Zone - Flexible Policy Adapter Profile - CLI](#)
- [SIP Adaptor Profile - CLI](#)
- [SIP Trunk Group - Signaling - CLI](#)
- [PSX documentation](#)

Overview

i Note

This configuration is not supported on ERE and is intended for use only with an external PSX.

The SBC supports a flexible policy mechanism to facilitate dynamic routing and policy decisions based on any SIP message information element whereby routing and policy selection criteria are provisioned by the operator. An information element can be anything in the message, such as the following examples:

- SIP header value
- Presence or absence of a header
- String in a message body
- Parameter value
- Presence or absence of a parameter

The flexible policy process is summarized below:

- Operator dynamically programs the SBC using flexible policy rules for extracting SIP information elements and populating variables.
- Operator provisions the PSX's flexible routing and policy framework to use those variables as criteria for selecting routes and policies.
- When a message is received by the SBC, flexible policy adapter profile rules are applied to populate the variables. These variables are sent in the policy request to Policy Execution Server (PES).
- The PES matches the received information contained in these variables to provisioned criteria and returns routes and policies in policy response.
- The SBC applies policies returned in the policy response and routes the message using routes received in the policy response.

Figure 1: Flexible Policy Mechanism

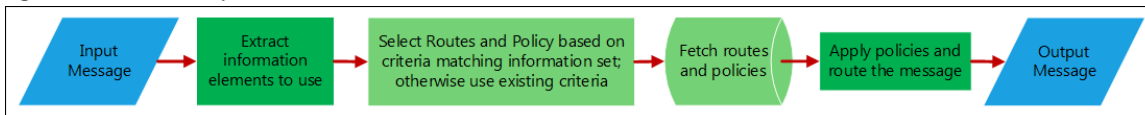
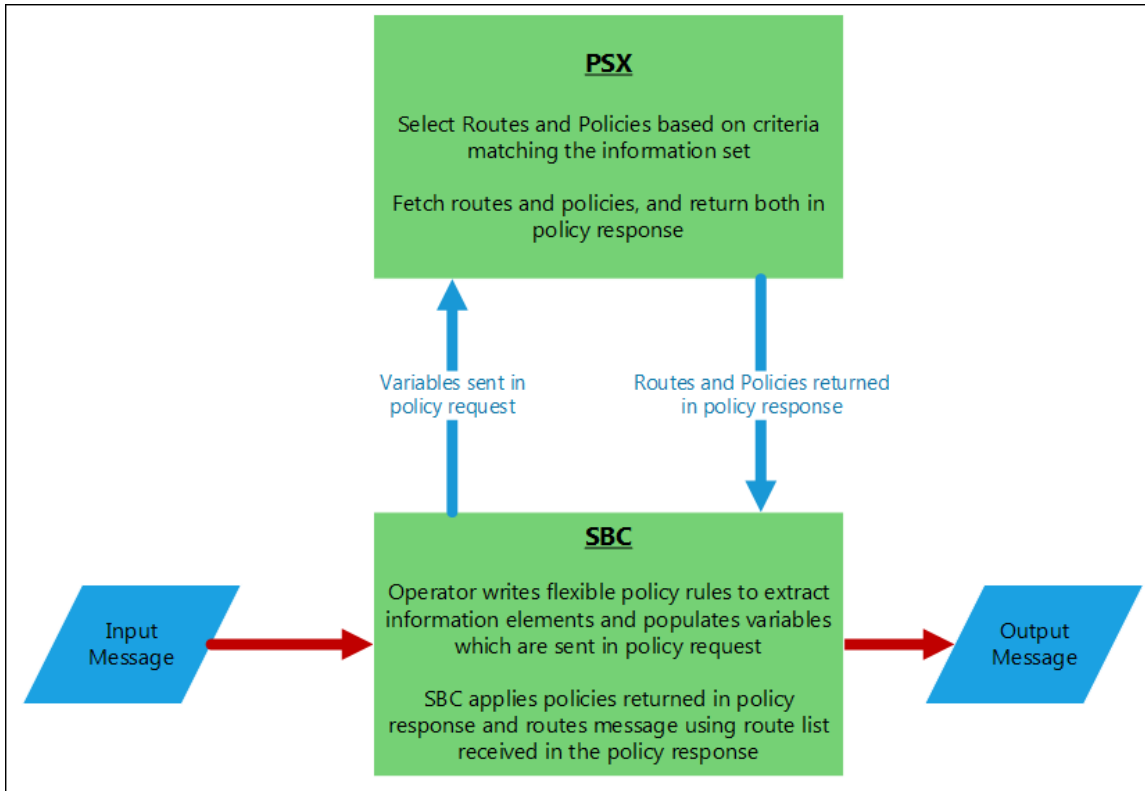


Figure 2: Flexible Policy Mechanism on SBC-PSX



The SBC supports creating a SIP adaptor profile designated for the flexible policy mechanism. This `flexiblePolicyAdapterProfile` profile is provisioned and attached to either/both the ingress Trunk Group or Ingress Zone. If `flexiblePolicyAdapterProfile` is provisioned both at the trunk group and zone, the trunk group's profile takes precedence. If `inputAdapterProfile` is configured, it is applied first to manipulate the PDU and then `flexiblePolicyAdapterProfile` rules are applied on the manipulated PDU.

i For CLI or EMA configuration details, refer to:

- System Provisioning - SIP Adaptor (SMM) Profile
- SIP Adaptor Profile - CLI

Refer to [Configuring Dynamic Policies and Routing Using Flexible Policy and Routing Feature](#) for best practice article.

Flexible Policy and Routing Enhancements for PSX

The SBC applies flexible policy rules on received SIP messages to store information in variables. These variables are then passed to PSX over the `Diameter+` interface in a policy request message.

The PSX uses the received information contained in these variables as a part of its enhanced Routing and Policy decision making. Refer to [PSX documentation](#) for additional details.

