

Validating MD5Sum with 'Checksums Calculator'

"Checksums calculator" is an open source GUI application that has been developed to run on Windows, MacOS X and Linux operating system on 32-bit and 64-bit architectures. It calculates checksums of functions: md5, sha1, sha256, sha384 and sha512.

i The checksum calculator is an open source tool used in the below procedure and it is one of the many other tools available for customer use. Sonus does not provide or distribute this tool for download. Sonus makes no warranties on using this tool etc.

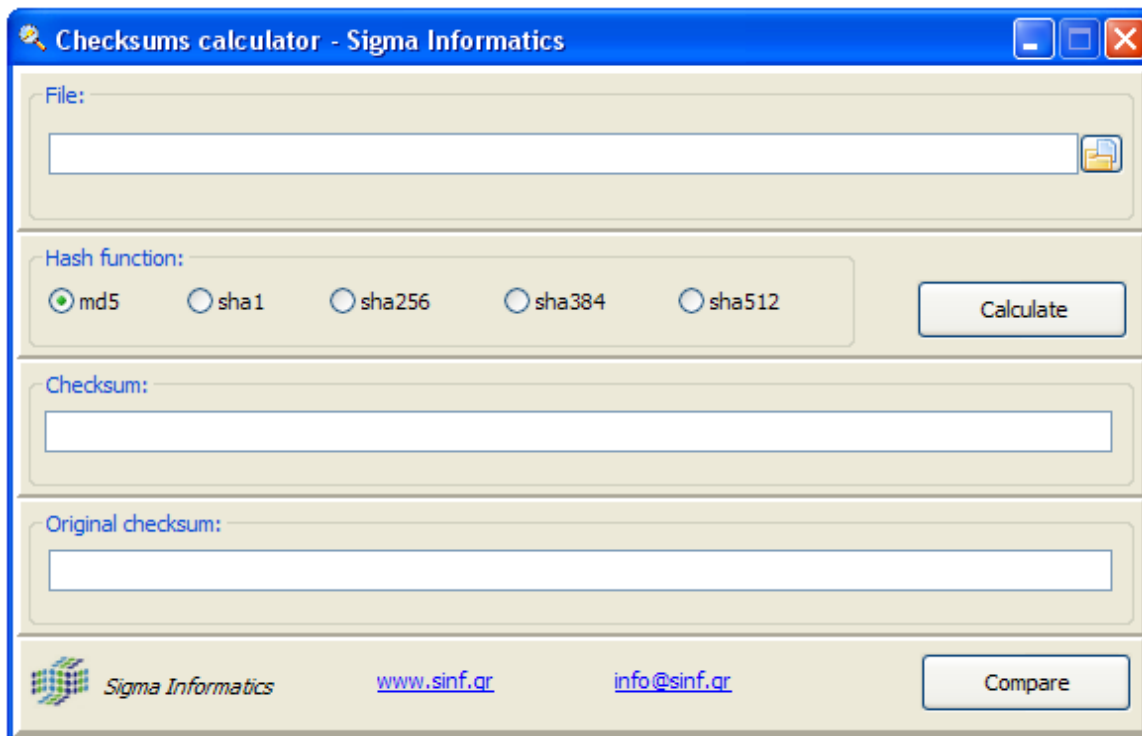
Perform the following steps to compare the BMC firmware package with md5sum:

1. Download all the files from Salesforce customer portal required for the SBC installation or upgrade.
2. Untar the Firmware package to get the bmc5X00_v2.4.1-R0.rom file
3. Download the calculator application (.zip) file that matches the version of your computer operating system.

i The example here shows the validation of BMC firmware package with the md5sum. This tool is also used to validate checksum of BIOS (bios5X00_v2.1.2-R0.rom), OS (connexip_os-V02.00.02R000.tar.gz) and SBC application package (sbc-V04.01.00-R000.x86_64.tar.gz).

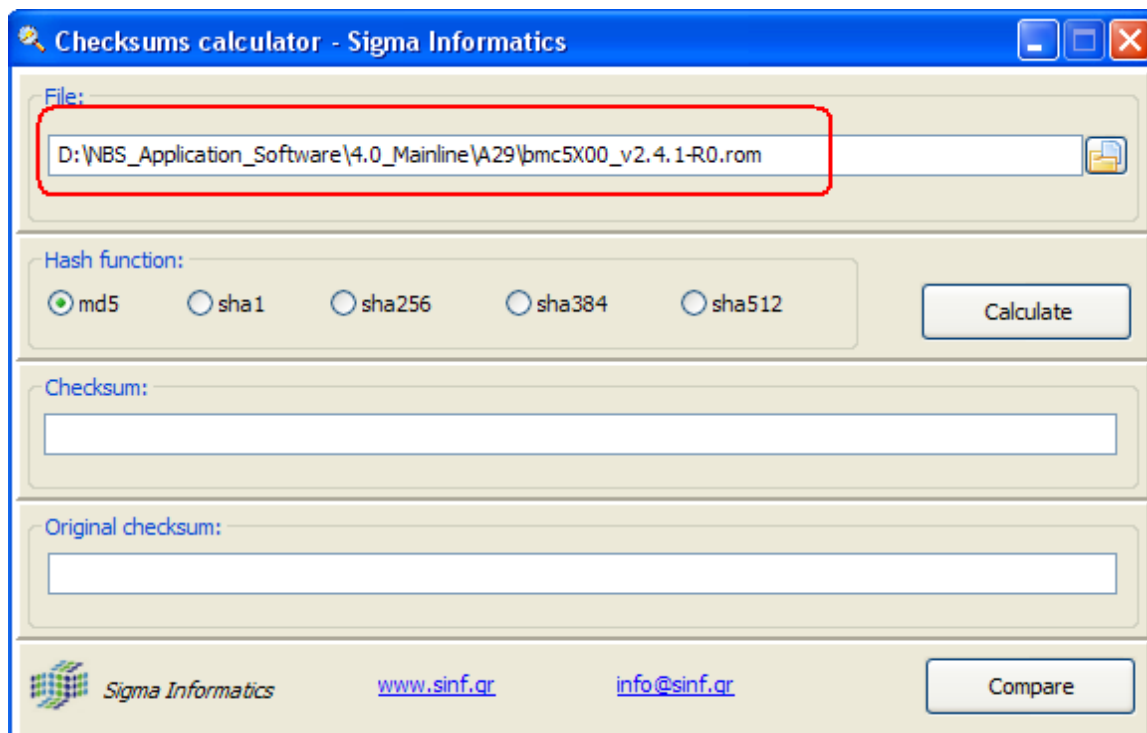
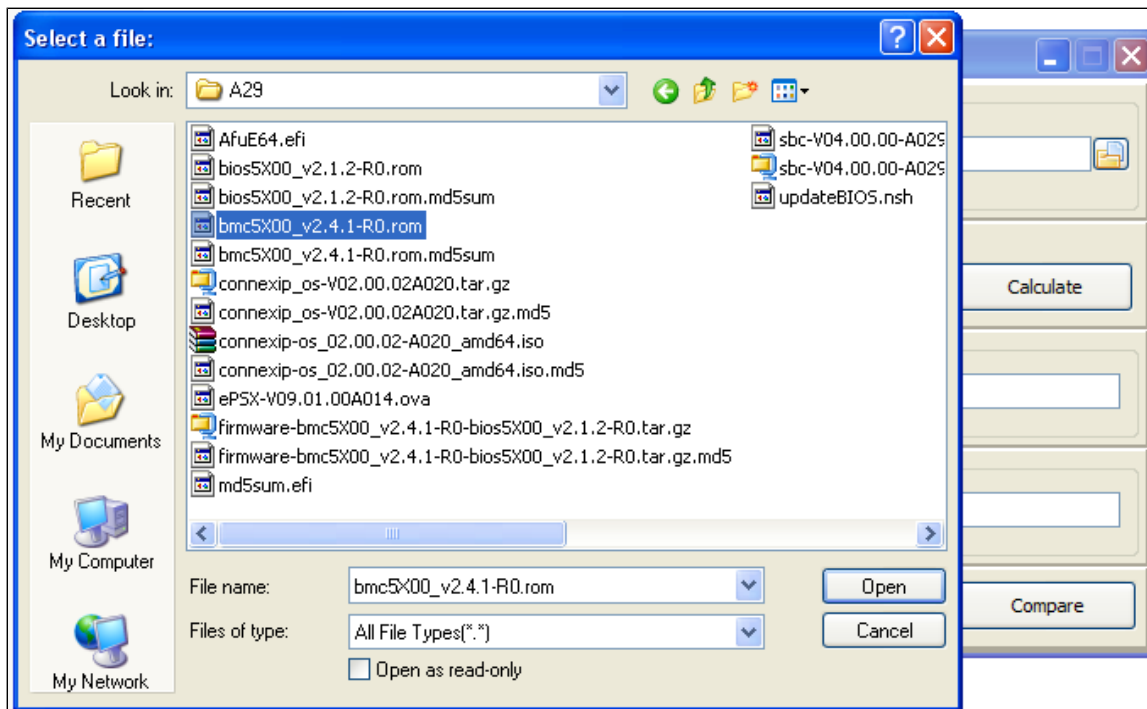
4. Unzip the calculator application file to a folder in your local computer.
5. Launch the "Checksums calculator" application from this folder. (The Checksums "hash" calculator name is different depending on your operating system).

Figure 1: Launching Hash Calculator



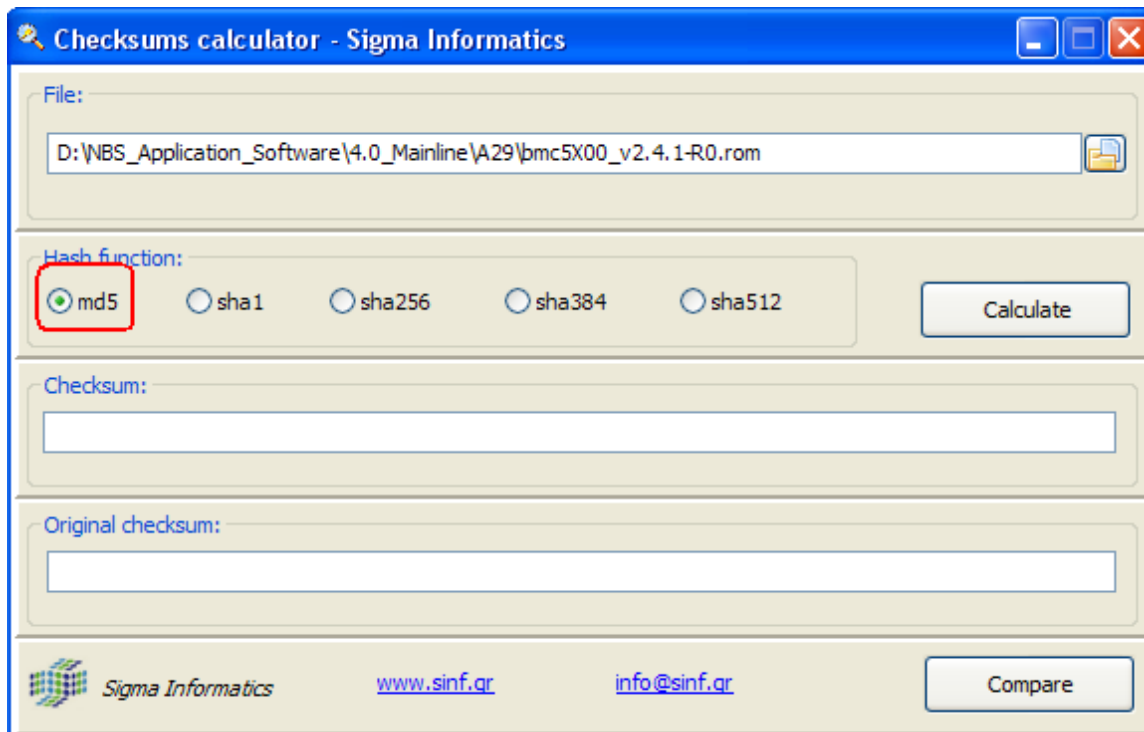
6. Using the Checksums calculator, browse and select the Sonus bmc5X00_xxxx.rom file (where xxxx is the file version).

Figure 2: Browsing BMC rom file



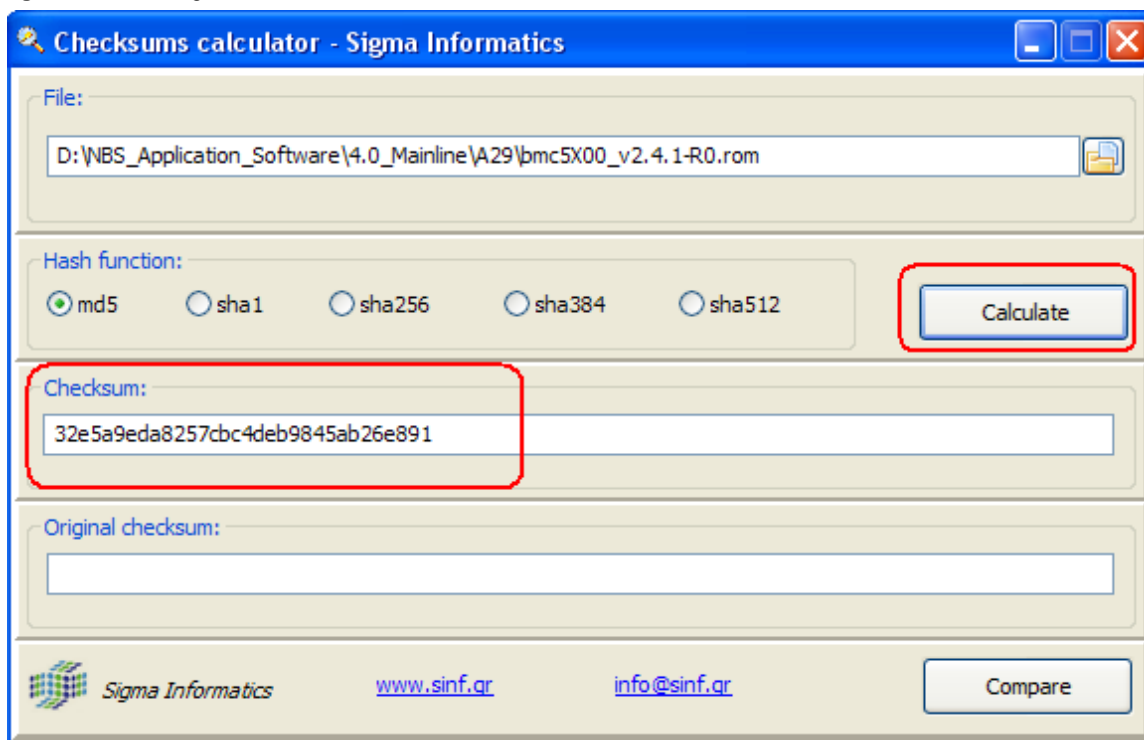
7. Select the "Hash function" md5.

Figure 3: Selecting md5 Function



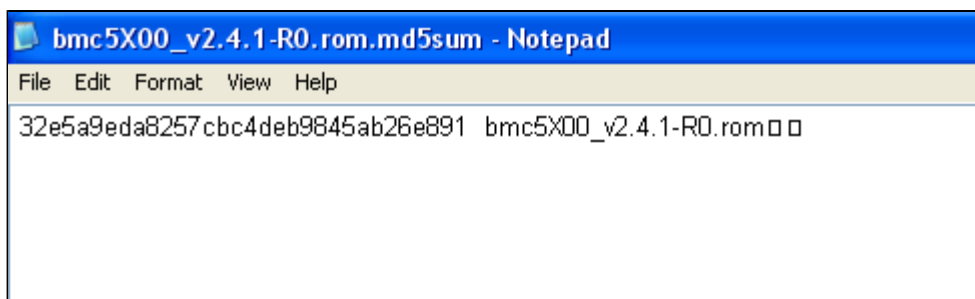
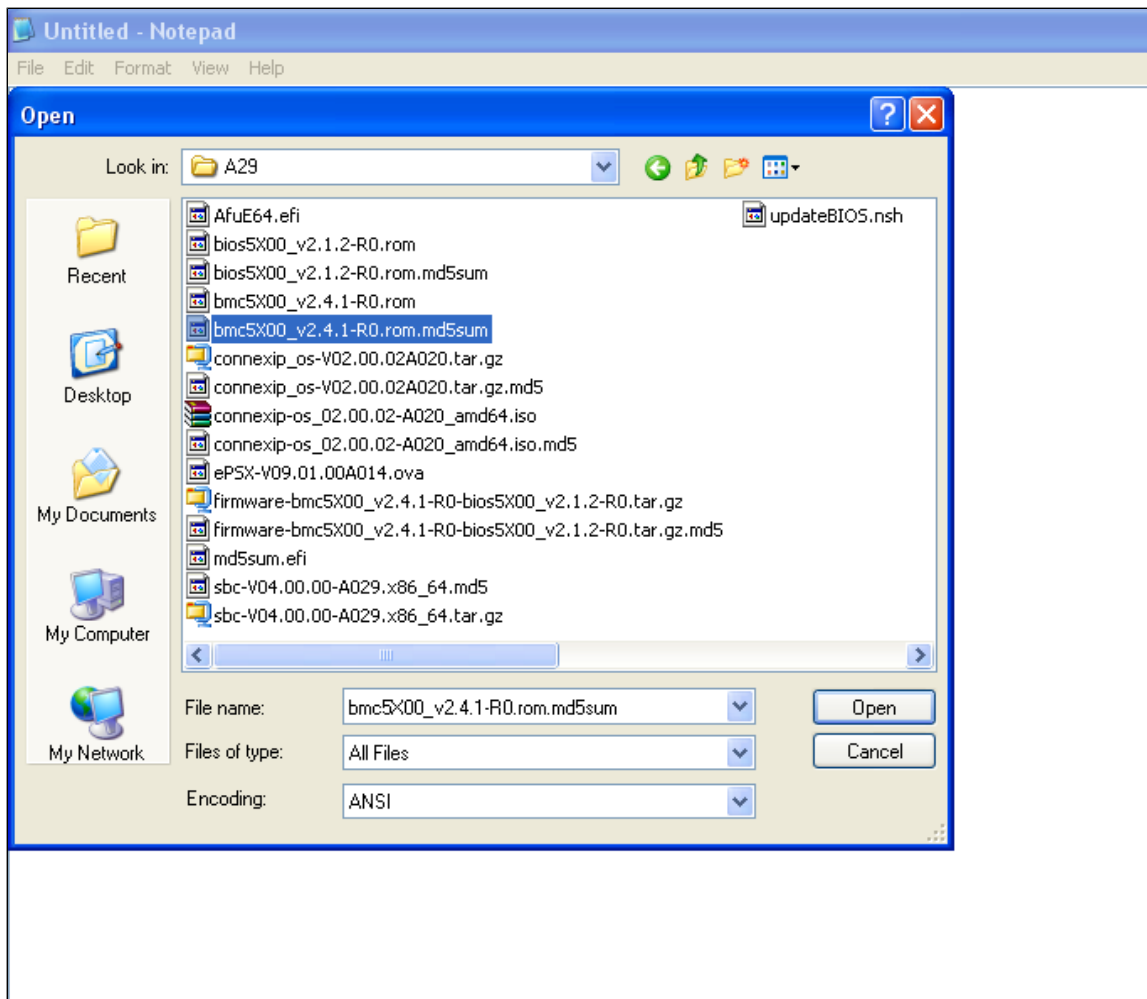
8. Click **Calculate**. This extracts the checksum from the .rom file. A hexadecimal value appears in the **Checksum** text box.

Figure 4: Calculating Checksum from ROM file



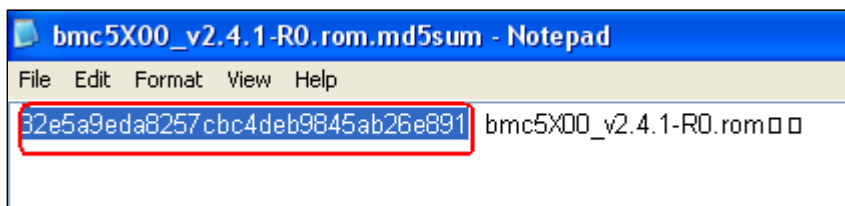
9. Using a text editor, browse and open the bmc5X00_xxxx.rom.md5sum file (where xxxx is the file version). This file contains a hexadecimal checksum value.

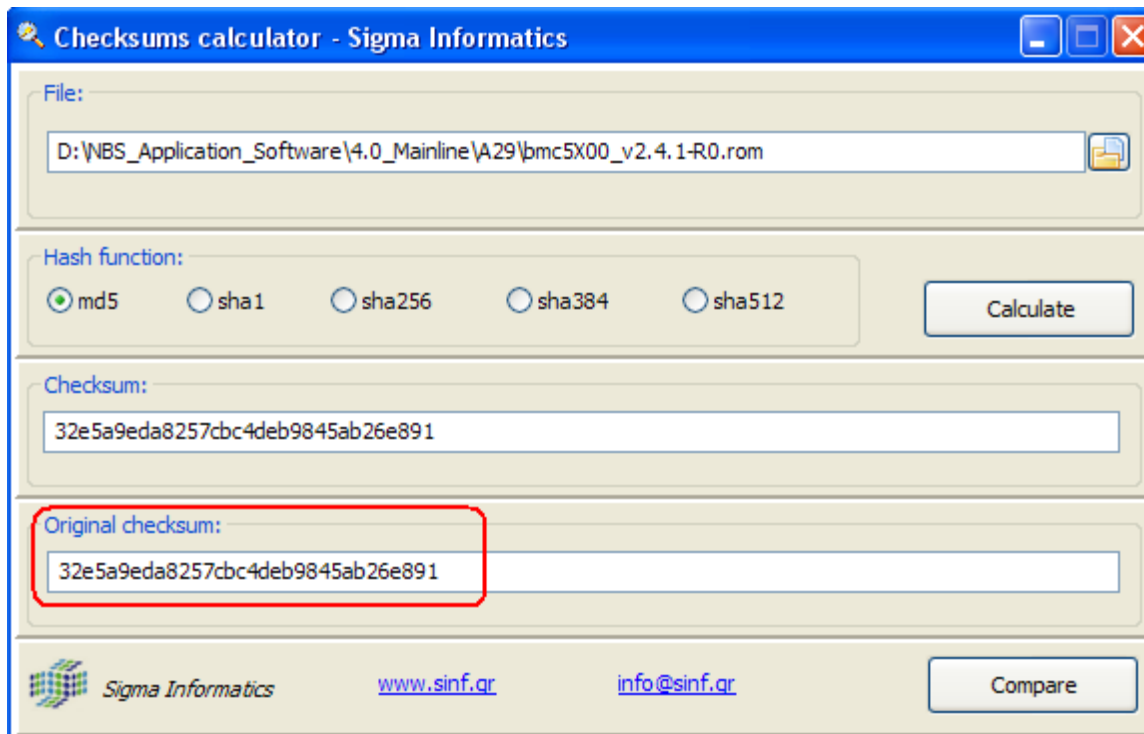
Figure 5: Opening BMC md5sum in Notepad



10. Copy and paste the contents of this file into the "Original checksum" box.

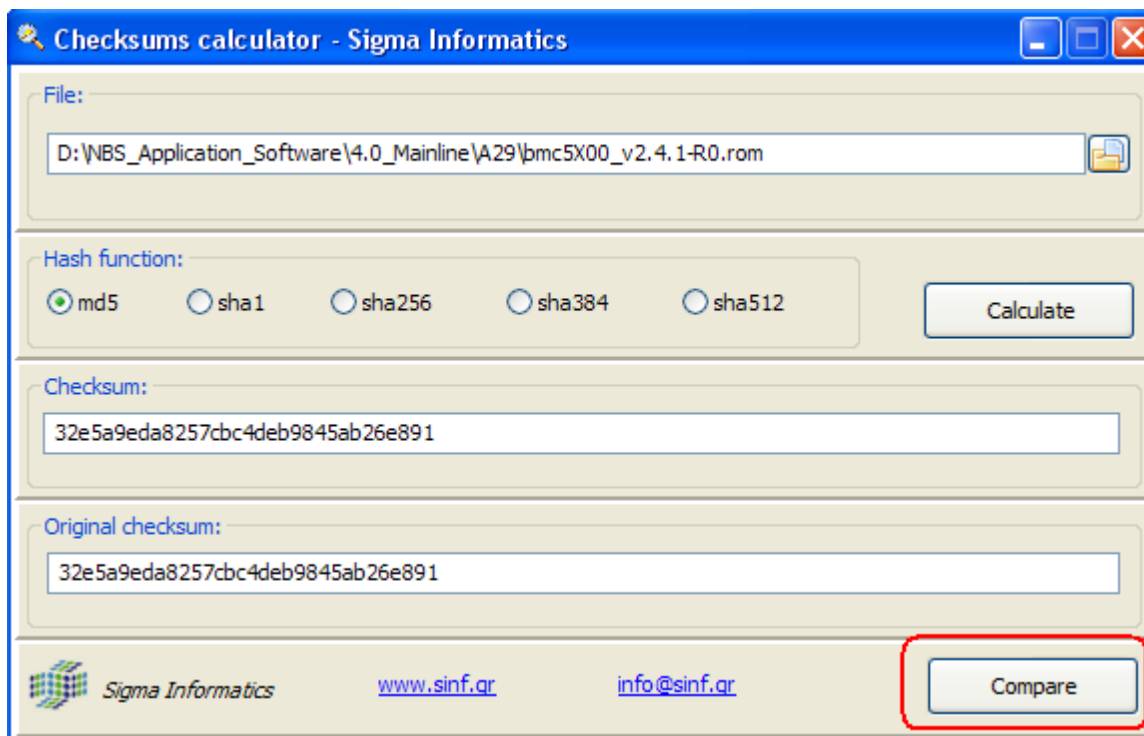
Figure 6: Copying and Pasting the checksum





11. Click **Compare**.

Figure 7: Comparing Checksums



Success is when both checksums are same and a message box displays "Checksums are identical". If any other message appears, repeat the process to download both the .rom and .md5sum from SalesForce customer portal and repeat the above process. If it fails again, please contact Sonus Technical Assistance Center.

Figure 8: Successfully Validating Checksums

