

Configuring VX as an OCS Gateway

This section of the [Extended Microsoft UC Features Quick Start Guide](#) describes how to add VX as an OCS Gateway.

- Placing VX into the Windows Management Interface (WMI)
 - To Configure VX as an OCS Gateway
- Add VX to OCS Environment
 - To Finish Adding VX to OCS Environment
- Full Configuration of Extended UC Features
 - To Complete Full Configuration of Extended UC Features
- Verifying VX Insertion into WMI and Checking the GRUU
 - To Verify the Configuration of GRUU on a VX Node


Placing VX into the Windows Management Interface (WMI)

Use the steps in this section to place VX into the WMI.

 The best results for successfully Adding a VX as an OCS Gateway is to run this wizard twice. Some installations have reported that the GRUU is not properly populated when the wizard is executed a single time.

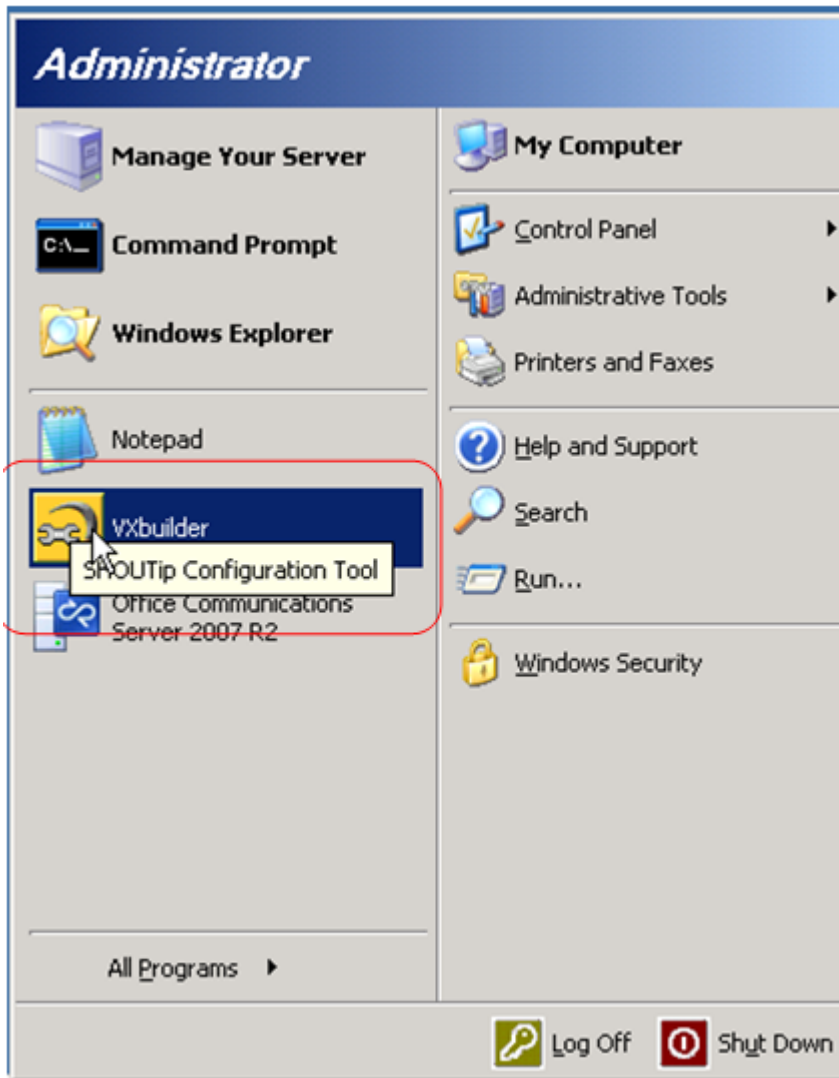
To Configure VX as an OCS Gateway

1. Install VXbuilder on the OCS Server system.

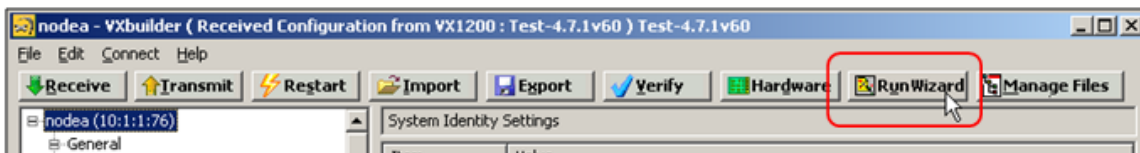
 **Make sure to run this with an account that has Domain Administration level authority.**



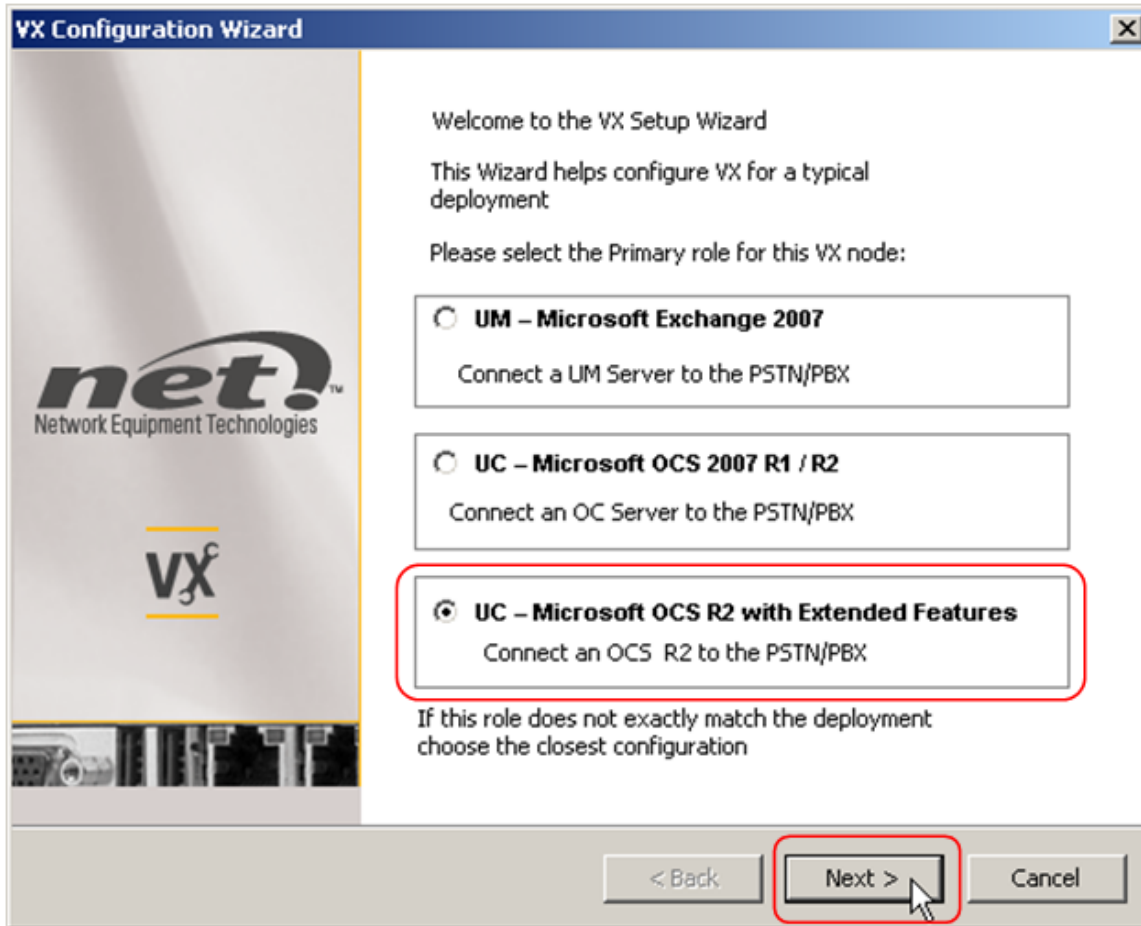
2. Start VXbuilder (from the OCS Server).



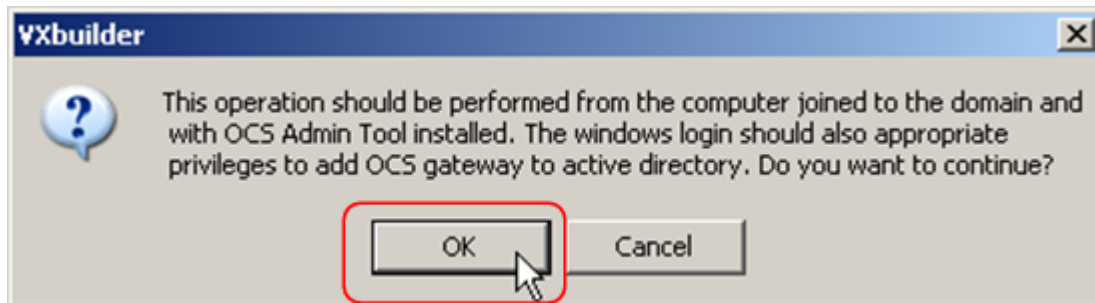
3. Click the **Run Wizard** button.



4. Select the **UC – Microsoft OCS R2 with Extended Features** wizard and click **Next**.

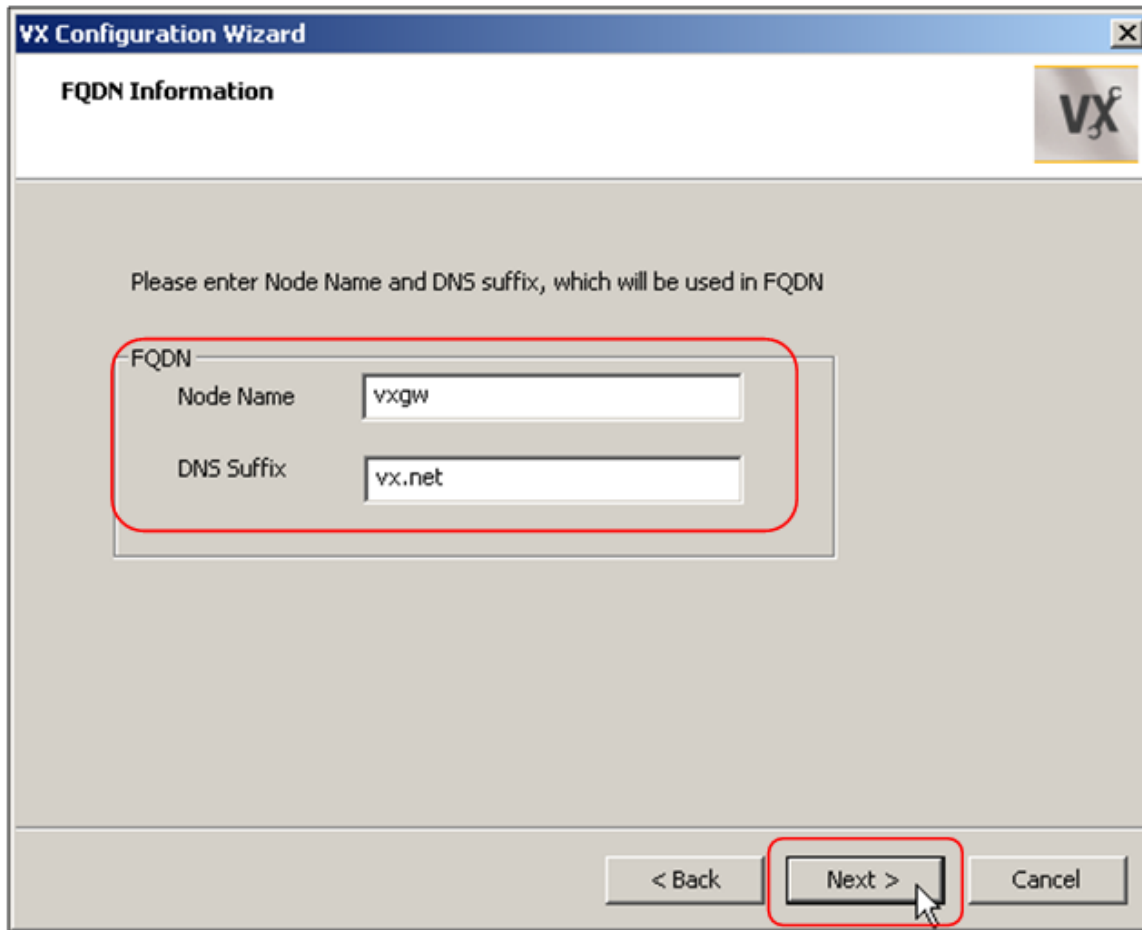


5. Click **OK** to continue.

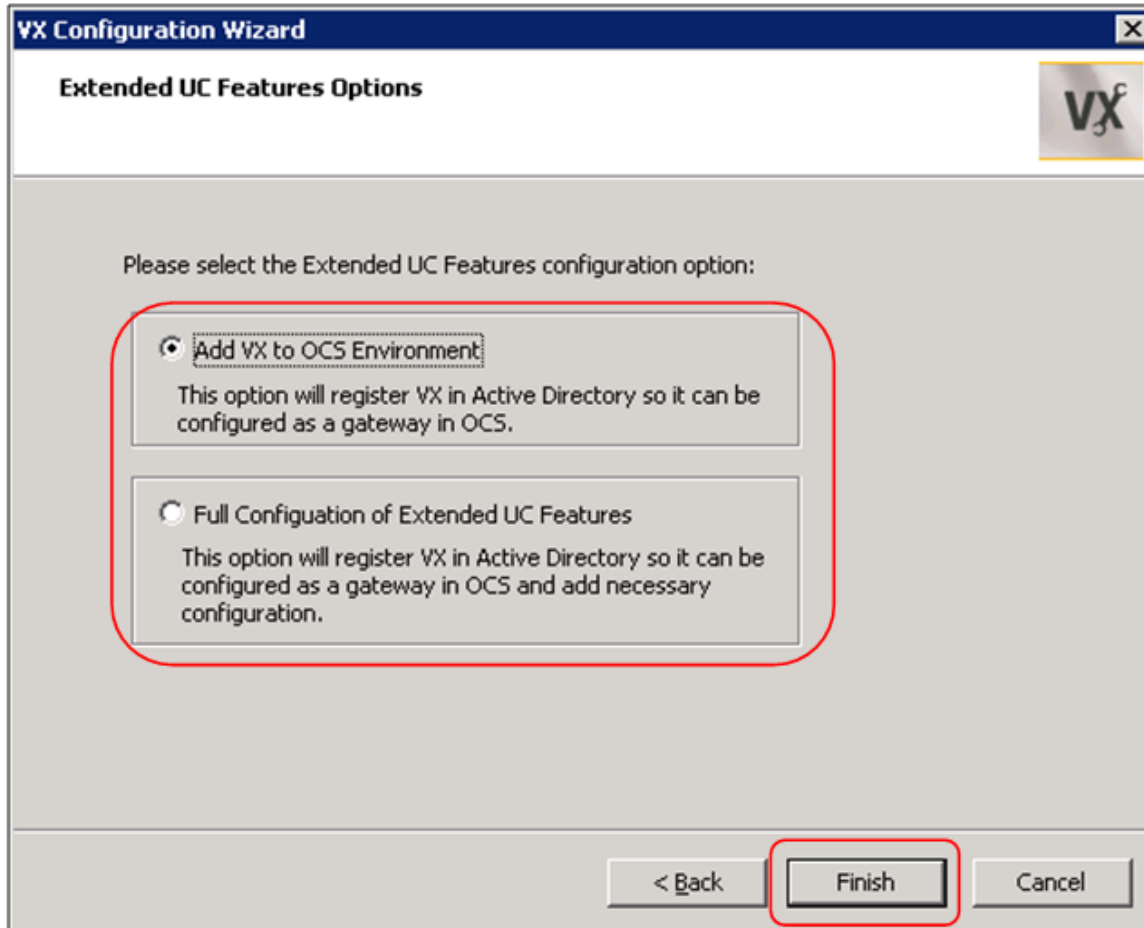


6. Enter VX's fully qualified domain name (FQDN). This must be resolvable by the DNS server.

i Be certain that the FQDN supplied below is correct before clicking **Next**. This information cannot be removed from the Windows Management Interface once submitted.



7. Select the Extended UC Features Option from one of the two options, then click **Finish** to continue.



- To simply add the VX to the OCS Gateway list (place VX into WMI), select **Add VX to the OCS Environment** and proceed to [Add VX to OCS Environment continued](#)
- To add VX and start a base VX configuration for UC integration, select **Full Configuration** and proceed to [Full Configuration continued](#)

Add VX to OCS Environment

The configuration continues in this section only if **Add VX to OCS Environment** is selected.

To Finish Adding VX to OCS Environment

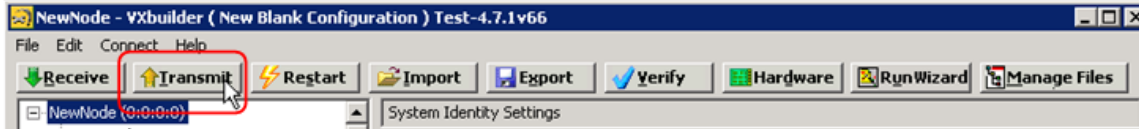
1. Click **OK** to acknowledge VX is successfully registered as a gateway in the OCS network.



2. Transmit the configuration back to the VX, registering VX as an OCS gateway.



If you are working from another VXbuilder, be sure to RECEIVE a new configuration from VX now before transmitting new changes.



Full Configuration of Extended UC Features

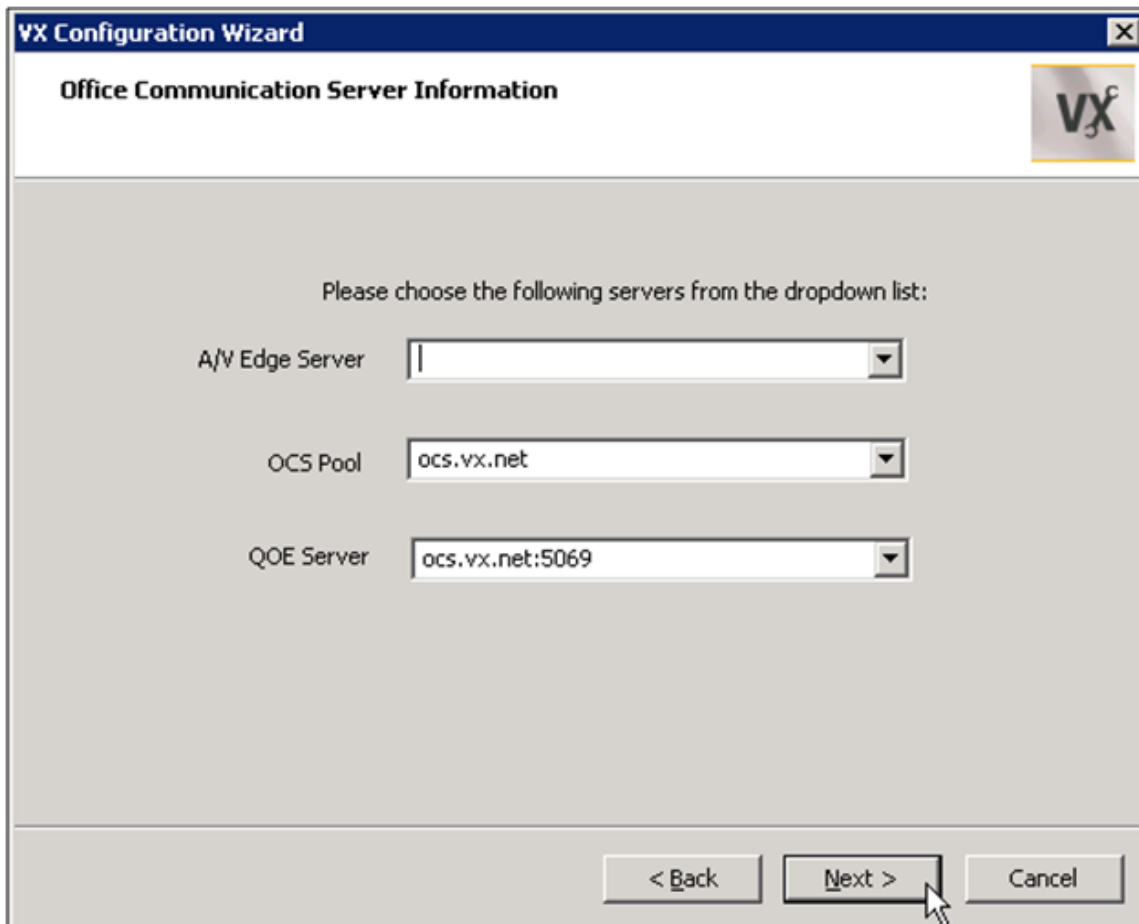
The configuration continues in this section only if **Full Configuration** is selected.

To Complete Full Configuration of Extended UC Features

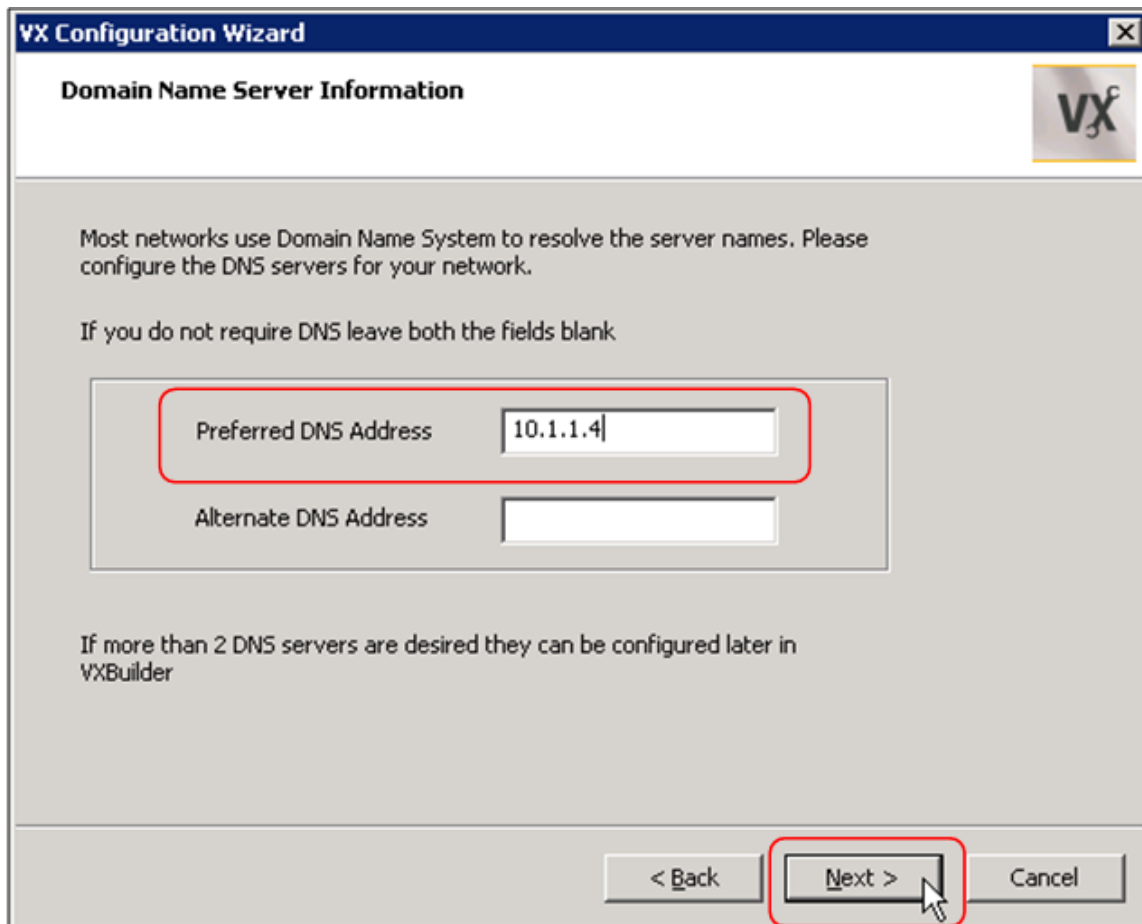
1. Enter the OCS fully qualified domain name (FDQN).



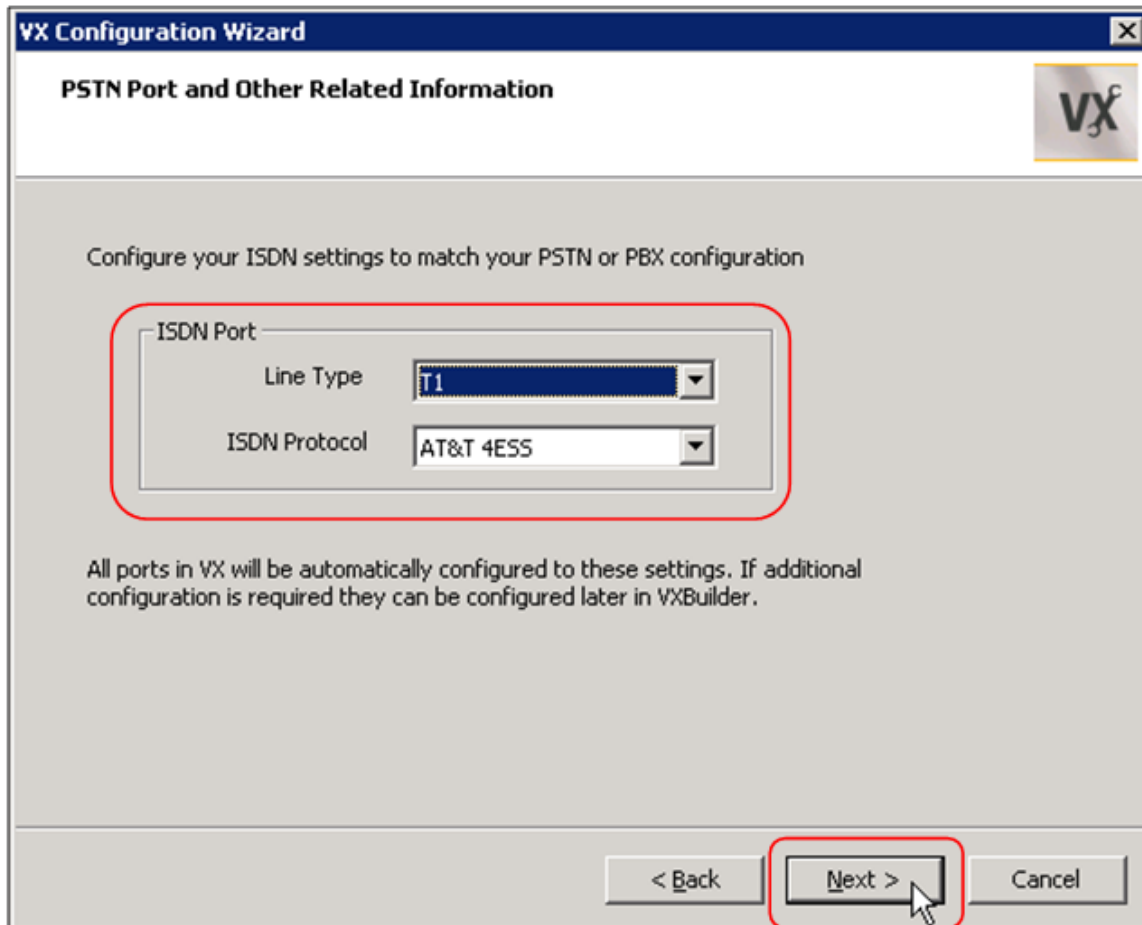
Be sure to select an AV Edge Server if one exists in your OCS domain.



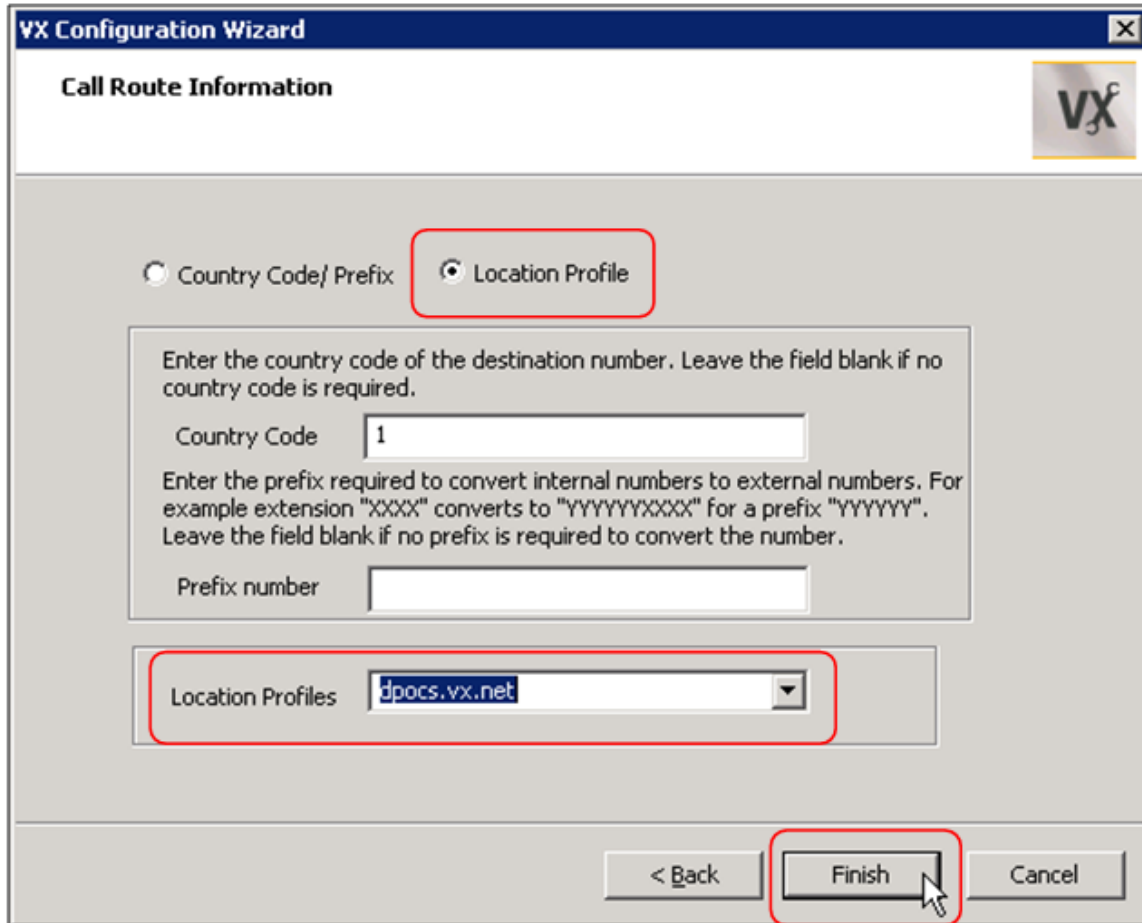
2. Enter the Preferred DNS address.



3. Enter the PSTN/PBX connection type and protocol.

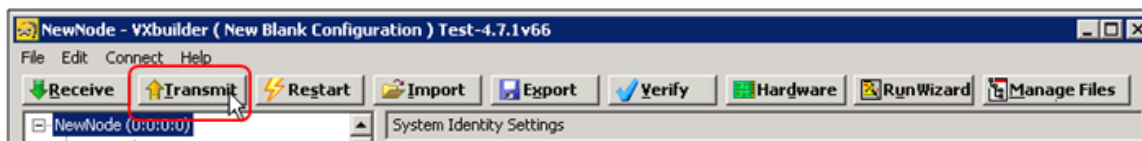


4. Enter the location profiles.



5. Be sure to transmit the configuration back to the VX registering VX as an OCS gateway.

Note: If you are working from another VXbuilder, be sure to **RECEIVE** a new configuration from VX now before transmitting new changes.



Verifying VX Insertion into WMI and Checking the GRUU

After you have inserted VX into WMI using the Wizard and received the configuration to a VXbuilder (probably not running on the OCS system), Verify the configuration by exporting the configuration to a file and reviewing it in a text editor such as Notepad.

To Verify the Configuration of GRUU on a VX Node

1. Start the VXbuilder application.
2. In VXbuilder, click the **Receive** button to retrieve the current configuration from your VX node.
3. Click **File > Export** and save the (.cfg) file to your desktop or other easily accessible folder.
4. Open the saved .cfg file in a text editor.
5. Search for a line starting with OCSGW.1.OCSGRUU. It should look something like the highlighted line below.

```

Logger.1.Rotation.NumFiles 10
Logger.1.Rotation.Size 500
Logger.Archive
Logger.Archive.DiskFree 2048
Logger.Archive.Size 0
NewNode 0
OCSSW
OCSSW.1
OCSSW.1.OCSGRUU sip:vxqw2.vx.net@vx.net;gruu;opaque=srvr:Gateway:5fKaBxCKAEubHaBibaco6wAA
OCSSW.1.OCSGWOCSPool
OCSSW.1.OCSGWOCSPool.1
OCSSW.1.OCSGWOCSPool.1.Server ocs.vx.net
OCSSW.1.OCSGWOCSPool.Server ocs.vx.net
OCSSW.1.OCSGWQOE
OCSSW.1.OCSGWQOE.1
OCSSW.1.OCSGWQOE.1.OCSGRUU sip:ocs.vx.net@vx.net;gruu;opaque=srvr:QoS:BTLpwIXw9EeSVWm_Fu4GmAAA
OCSSW.1.OCSGWQOE.1.Port 5069
OCSSW.1.OCSGWQOE.1.Server ocs.vx.net
OCSSW.1.OCSGWQOE.OCSGRUU sip:ocs.vx.net@vx.net;gruu;opaque=srvr:QoS:BTLpwIXw9EeSVWm_Fu4GmAAA
OCSSW.1.OCSGWQOE.Port 5069
OCSSW.1.OCSGWQOE.Server ocs.vx.net
SS7

```

- If the OCSGW.1.OCSGRUU line is blank, run the wizard again from the OCS server. Select the **Add VX to OCS Environment** option in the wizard.