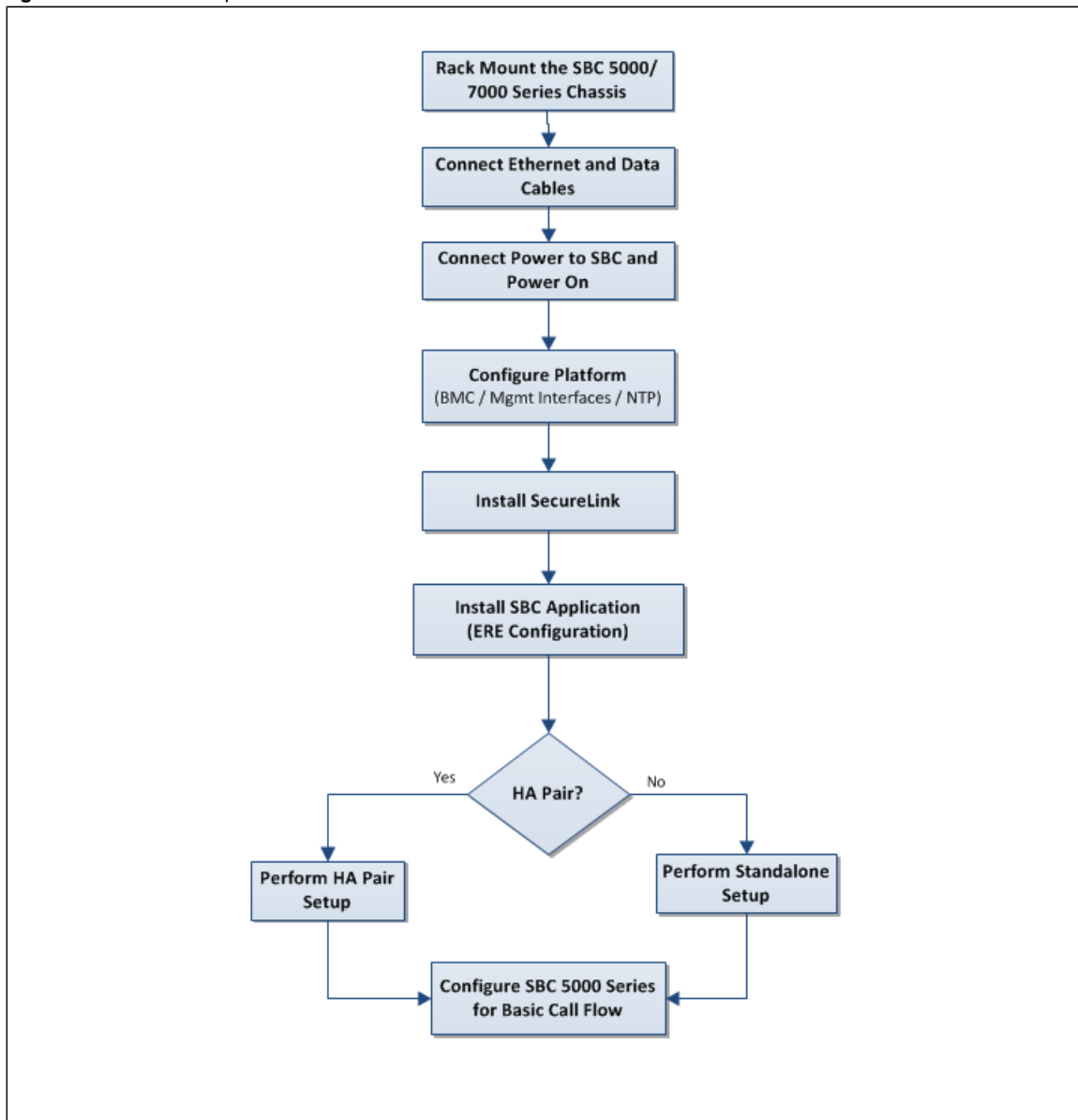


# Installation Sequence

This following diagram shows a high-level flow of the SBC 5000 series and SBC 7000 installation sequence, from rack mounting the SBC chassis to placing your first call.

**Figure 1:** Installation Sequence



Click a link below to go to an installation task based upon your SBC type and configuration options:

1. Rack mount the chassis:
  - a. [Rack Mounting the SBC 5000 Series Chassis](#)
  - b. [Rack Mounting the SBC 7000 Series Chassis](#)
  
2. Connect Ethernet and data cables:
  - a. [Connecting SBC 5000 Series Ethernet and Data Cables](#)
  - b. [Connecting SBC 7000 Series Ethernet and Data Cables](#)
  
3. Connect power to SBC and power on:
  - a. [Connecting Power to SBC 5000 Series and Powering On](#)

b. Connecting Power to SBC 7000 Series and Powering On

4. Upgrade BMC firmware (if required):

a. Upgrading SBC 5000 Series Firmware

b. Upgrading SBC 7000 Series Firmware

5. Configure SBC platform (BMC, management interfaces, NTP):

a. Configuring the SBC 5000 Series Platform

b. Configuring the SBC 7000 Platform

6. Install SecureLink for Remote Access

7. Install SBC Application Software

8. Configure SBC for a basic call flow and make first call