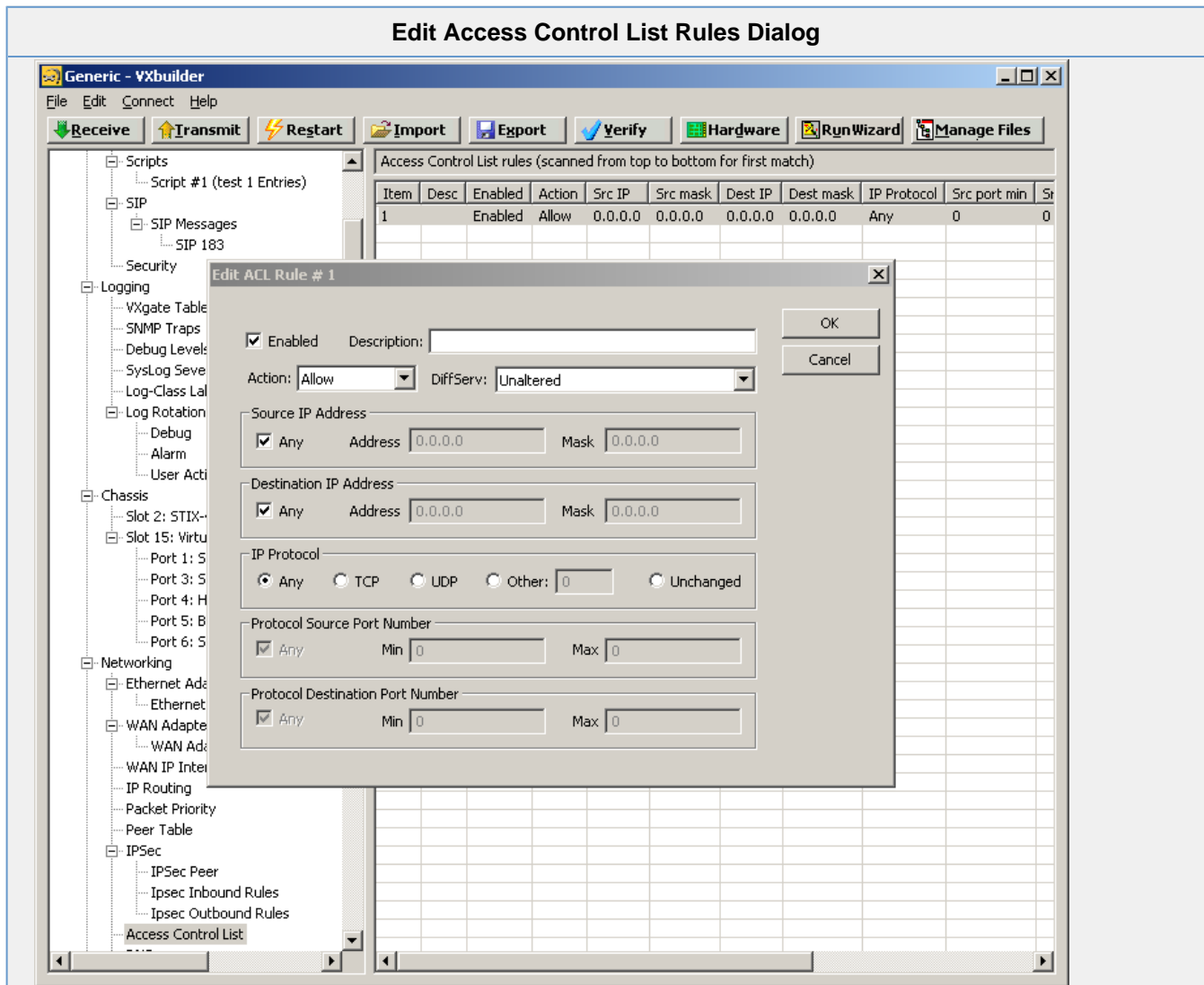


# Access Control List

Use tools and procedures in this section to set parameters for Access Control Lists.

<b>View ACL</b>	Select the <b>Networking</b> and select the <b>Access Control List rules</b> option.
<b>Add ACL</b>	Insert a new line in the <b>Access Control List rules</b> screen, then double-click the line to present the <b>Edit Access Control List Rules</b> dialog box.
<b>Modify ACL</b>	Double-click on table line in the <b>Access Control List rules</b> screen, to present the <b>Edit Access Control List Rules</b> dialog box.



Field	Description
<b>Enabled</b>	Enable or disable the ACL rule.
<b>Description</b>	Text description of the access rule
<b>Action</b>	Selects whether to allow the traffic or to block the traffic Allow--allows packets to be filtered.
<b>DiffServ</b>	Specifies the DiffServ level to which to modify the packets. The DiffServ values are presented here as they are defined in the DiffServ Table. This value can also be set to unaltered (the default).

<b>Source IP Address</b>	Source IP address and mask to match, as either any, by specified address, or specified network mask
<b>Destination IP Address</b>	Destination IP address and mask to match, as either any, by specified address, or specified network mask
<b>IP Protocol</b>	The IP protocol to match, as either any, TCP, UDP, other, or whatever is currently set.
<b>Protocol Source Port Number</b>	Range of UDP/TCP source ports to match, as either any, minimum, or maximum
<b>Protocol Destination Port Number</b>	Range of UDP/TCP destination ports to match, as either any, minimum, or maximum.