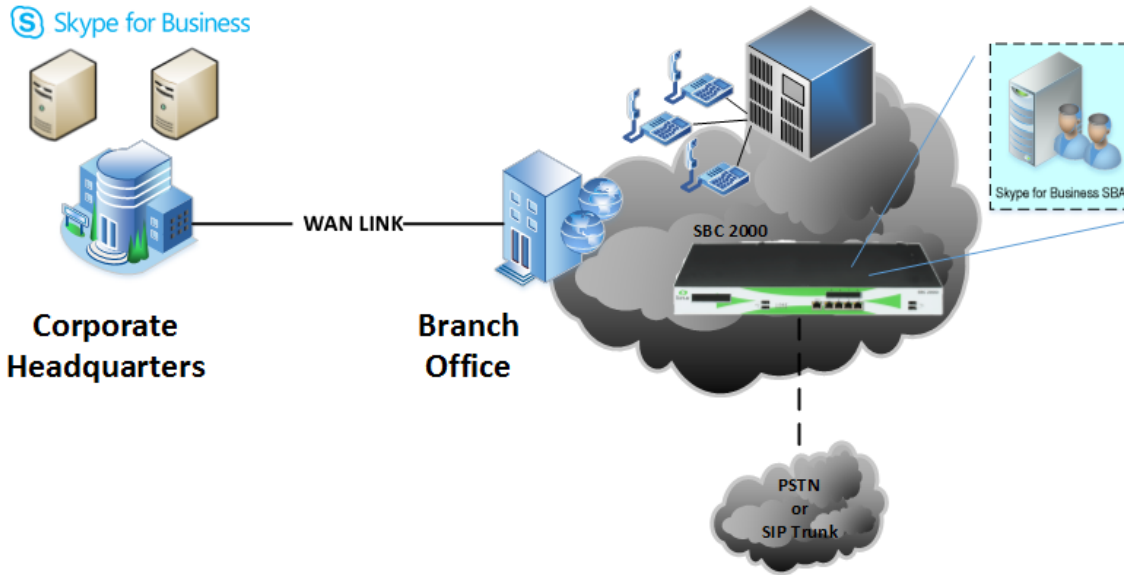


# Deploying the Survivable Branch Appliance

Skype for Business allows enterprises to deploy a Survivable Branch Appliance (SBA) at branch/remote offices that can switch to a stand-alone mode with limited functionality when the WAN link between the branch and the central site (which is usually corporate HQ) goes down. This page lists the steps needed to deploy Skype for Business SBA at a branch site along with the corresponding configurations needed at the central site.

Figure 1: SBA in Network



## Central Site Tasks

The following steps are required when deploying the SBA for the first time.

1. Adding the SBA to Active Directory
2. Adding the SBA to your Skype for Business (Lync 2010) Topology or Adding the SBA to your Skype for Business (Lync 2013) Topology, as appropriate to your deployment.
3. DNS Verification

### ✓ Re-deploying the SBA?

If the SBA was previously deployed, and your ASM has been re-initialized, then you may skip over this section and continue starting with the #Branch Site Tasks.

## Branch Site Tasks

1. In the WebUI, click the **Tasks** tab.
2. In the left navigation pane, under **Lync™ Survivable Branch Appliance**, click **Setup SBA**.
3. Proceed with these steps in order:
  - a. Configuring the ASM IP Settings
  - b. Joining the ASM to a Domain
  - c. Deploying the SBA
  - d. Generate and Import an SBA Certificate
  - e. Starting the SBA Services
  - f. Applying an SBA Security Template (Optional Step)

## **Install the Latest Lync SBA Cumulative Update (CU)**

To ensure the Lync SBA is running the latest Lync Server patches, administrators should [install the latest Cumulative Update](#)

## **Checking the SBA Status**

To confirm that all the SBA services are running properly, check the status by [Viewing ASM Operational Status](#).