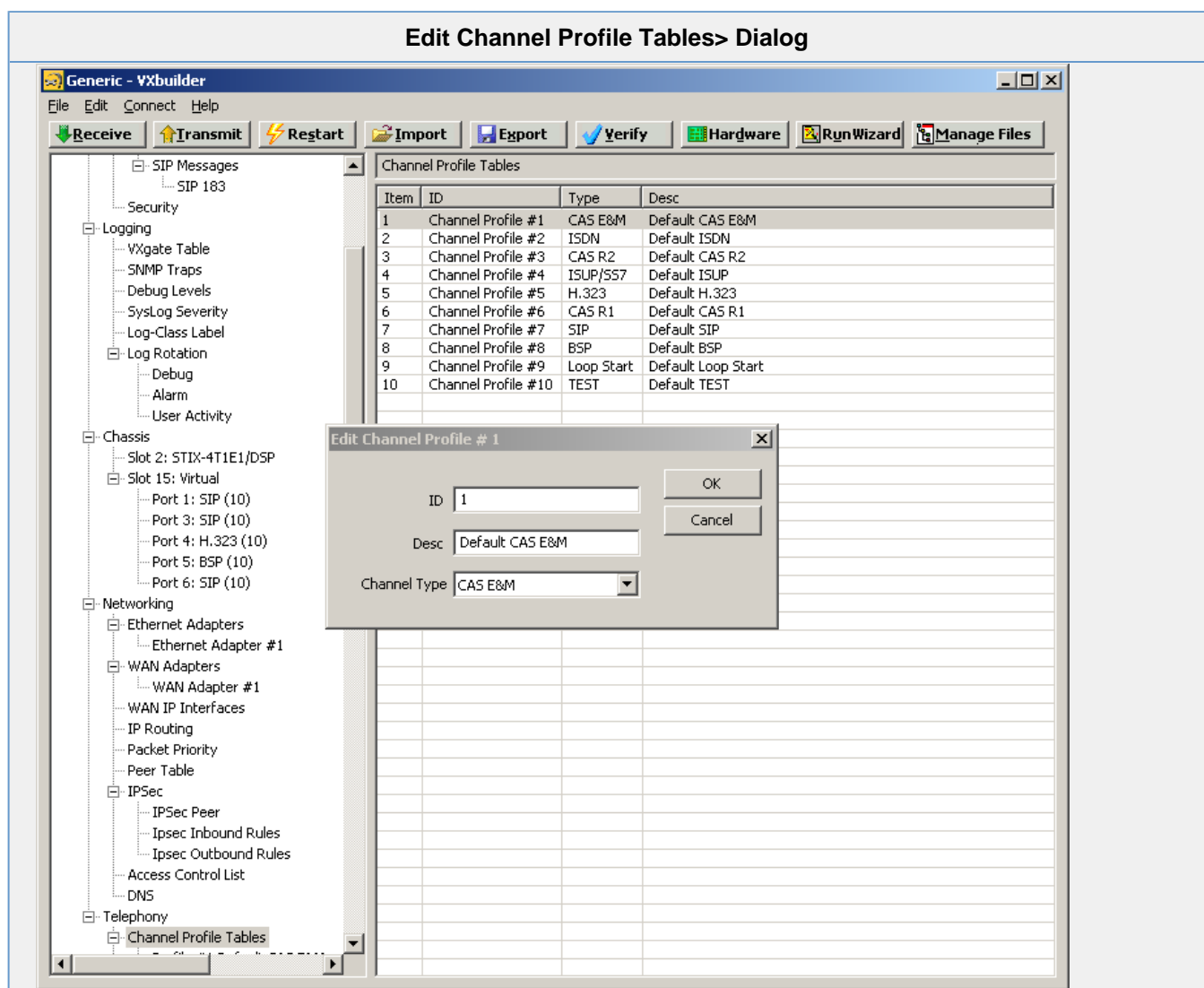


Managing Channel Profile Tables

Channel profiles present the properties of a channel on a port. When a channel profile is assigned to a port, all the channels on the port assume the characteristics described in the channel profile. If a characteristics in the channel profile is changed, it is then applied to all the channels on the port to which the profile is assigned.

View Channel Profile	Expand the Telephony directory to access the Channel Profile Tables sub - directory for the VX node, and to view Channel Profile entries in the Channel Profile Tables screen.
Add Channel Profile	Insert a new line in the Channel Profile Tables screen, then double-click on the new line to present the Edit Channel Profile Tables dialog box.
Modify Profile	Double-click on an entry in the Channel Profile Tables screen, to present the Edit Channel Profile Tables dialog box.



Field	Description
ID	The number of the channel profile table
Description	A brief text description of the channel profile table. This information will be presented in the Desc column of the Channel Profile Tables display.

Channel Type	Drop-down selection range from which to select one of the following channel profile types: <ul style="list-style-type: none">• CAS E&M Channel Profile• ISDN Channel Profile• CAS R1 Channel Profile• CAS R2 Channel Profile• CAS Tunnel Channel Profile• CAS MRD Channel Profile• H.323 Channel Profile• ISUP Channel Profile• SIP Channel Profile• BSP Channel Profile• Loop Start Channel Profile• Test Channel Profile
---------------------	---