



Re-Installing ConnexIP Operating System for SBC 7000 Series

In this section:

- [Downloading ConnexIP ISO Image](#)
- [Installing OS](#)

The ConnexIP Operating System jump start installation is required in cases such as, reverting to older releases, SSD drive replacement. To re-install ConnexIP OS, follow the procedure below:

 The ConnexIP ISO installation procedure automatically copies the SBC application package to the SBC platforms.

 The ConnexIP ISO installation procedure takes around 30 to 40 minutes to complete.

Downloading ConnexIP ISO Image


Download the following ConnexIP OS files bundled from the Sonus Salesforce customer portal:

- [sbc-V06.00.00R000-connexip-os_03.04.00-R000_amd64.iso](#)
- [sbc-V06.00.00R000-connexip-os_03.04.00-R000_amd64.iso.md5](#)

Refer to [Downloading the Software from Salesforce](#) to know more.

To determine the exact OS versions, refer the appropriate release notes at [SBC Release Information](#).

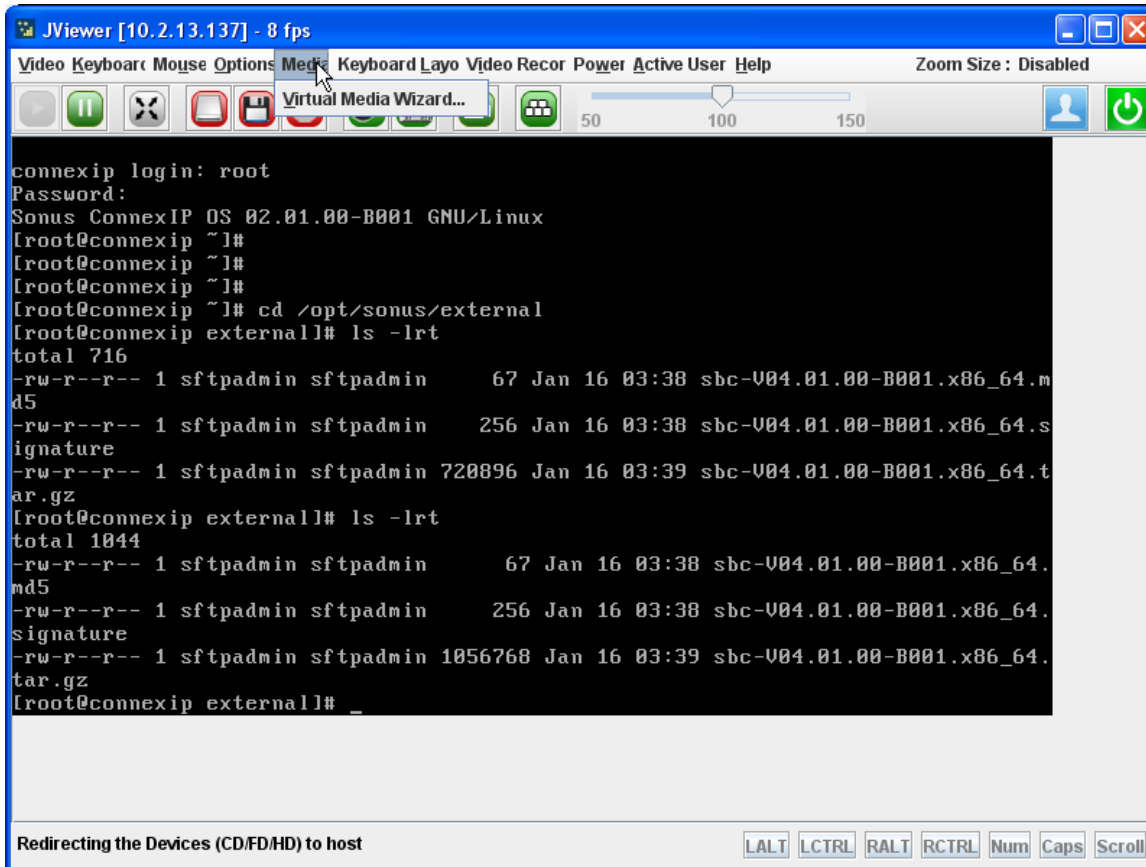
Installing OS

 Reinstalling the OS will format your disk and erase all data. Sonus highly recommends saving the configuration data to a temporary directory on the remote server before reinstalling the OS in the event you need to restore the original configuration data after the re-installation.

The following procedure describes how to reinstall the ConnexIP OS:

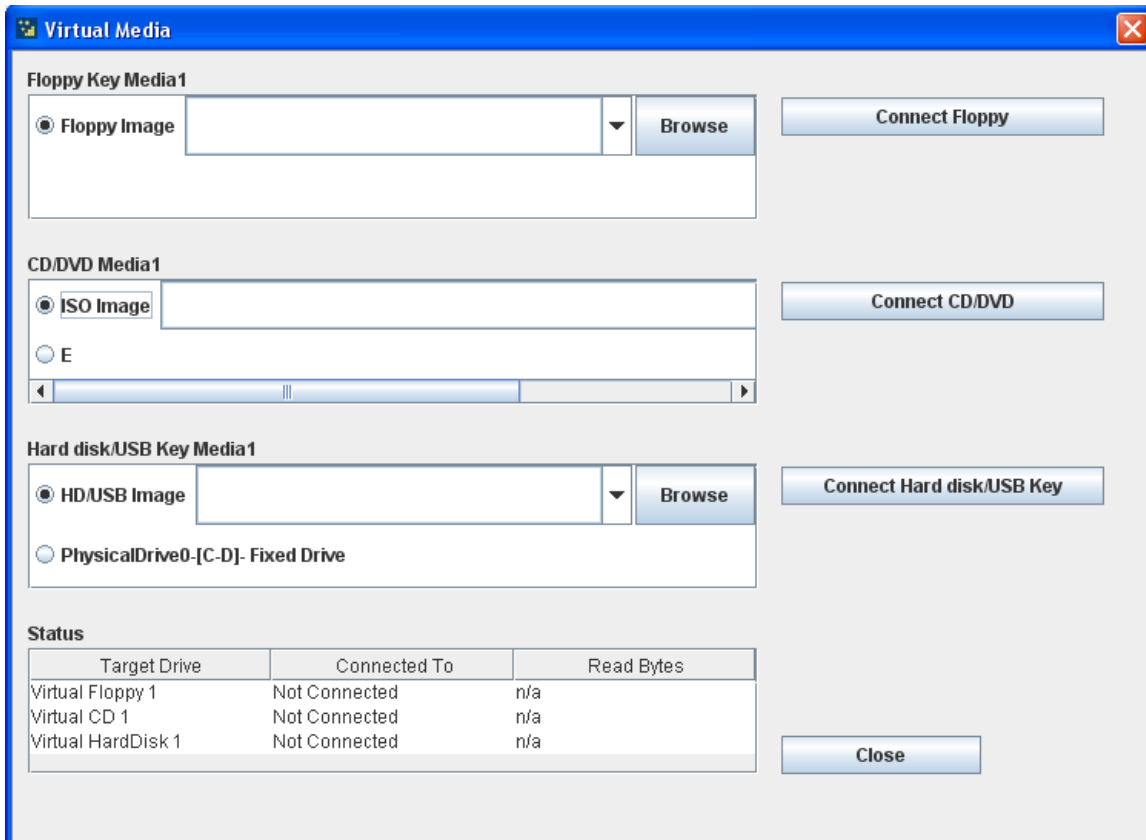
1. Launch the host remote console through the BMC. Refer to [Launching the Remote Console from the BMC](#).
2. Select **Media** in the JViewer and click **Virtual Media Wizard**.

Figure 1: Virtual Media Wizard



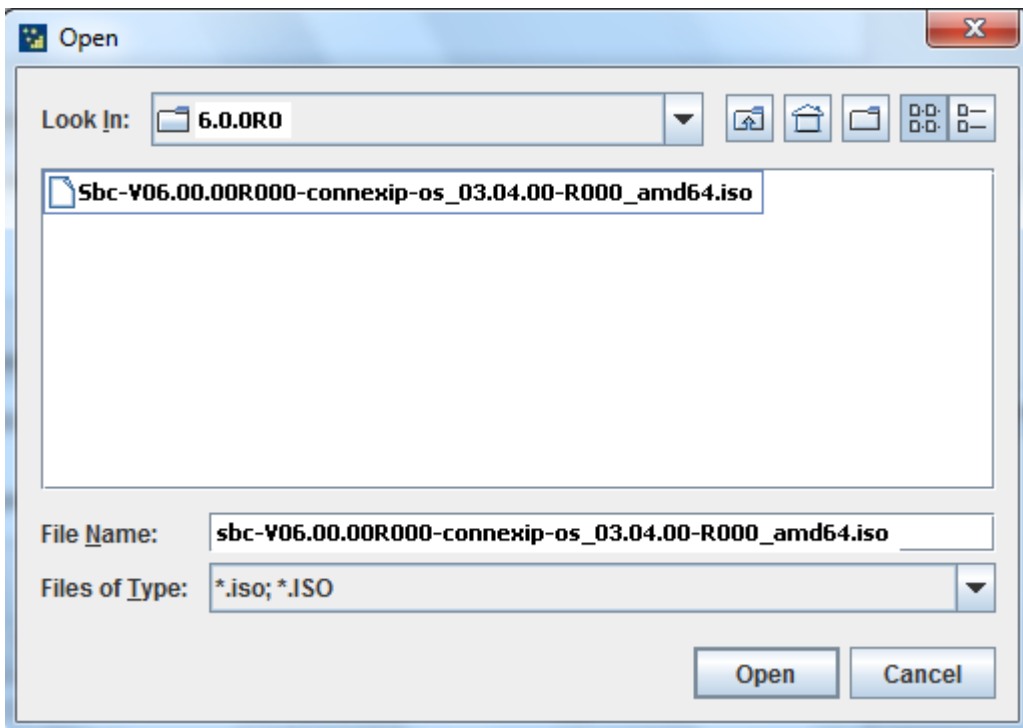
3. The **Virtual Media** screen appears. Select **ISO Image** from **CD/DVD Media1** section of the screen.

Figure 2: Virtual Media Screen



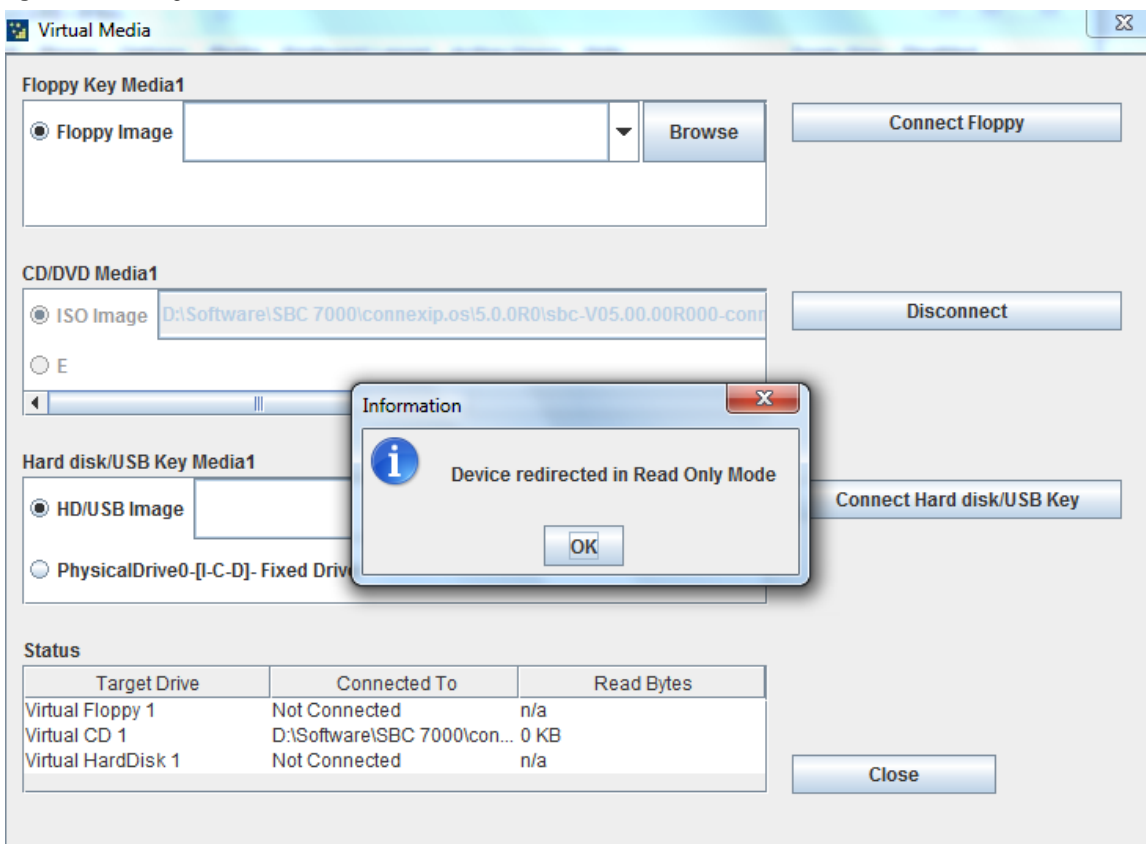
4. Click **Browse**. From the Open dialog, browse to and select the **connexip-os_<version>_amd64.iso** file and click **Open**.

Figure 3: Open Dialog Screen



- 5. Click **Connect CD/DVD**. A message *Device redirected in Read Only Mode* appears on the screen. Click **OK** to continue. This mounts the ISO image from your local desktop or laptop.

Figure 4: Mounting Virtual CD/DVD



- 6. Click **Close**.
- 7. Reboot the system from JViewer by executing the following command:
reboot

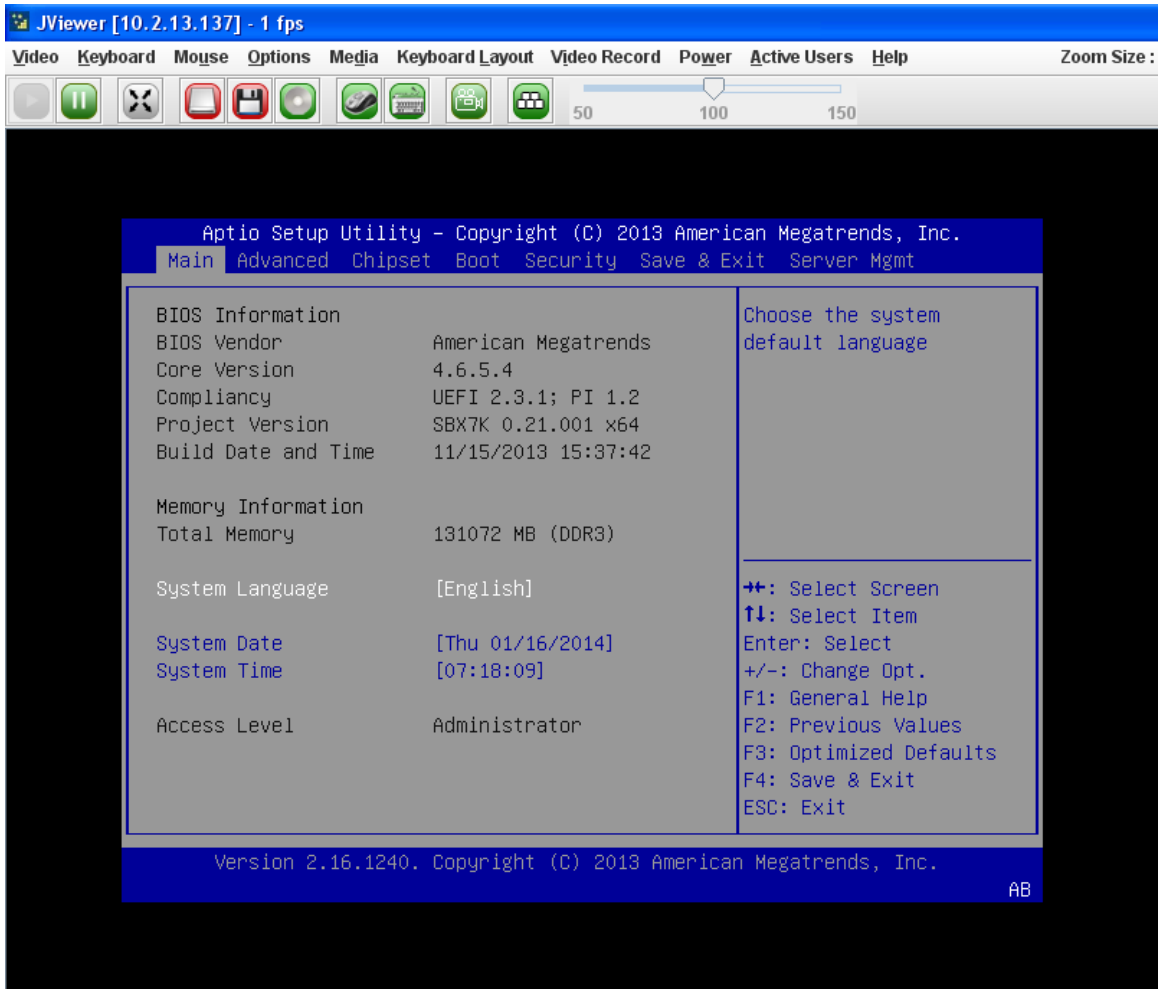
- After few minutes, the splash screen appears. Press **** or **<Esc>** key immediately to enter into BIOS configuration screen.

Figure 5: BIOS Splash Screen



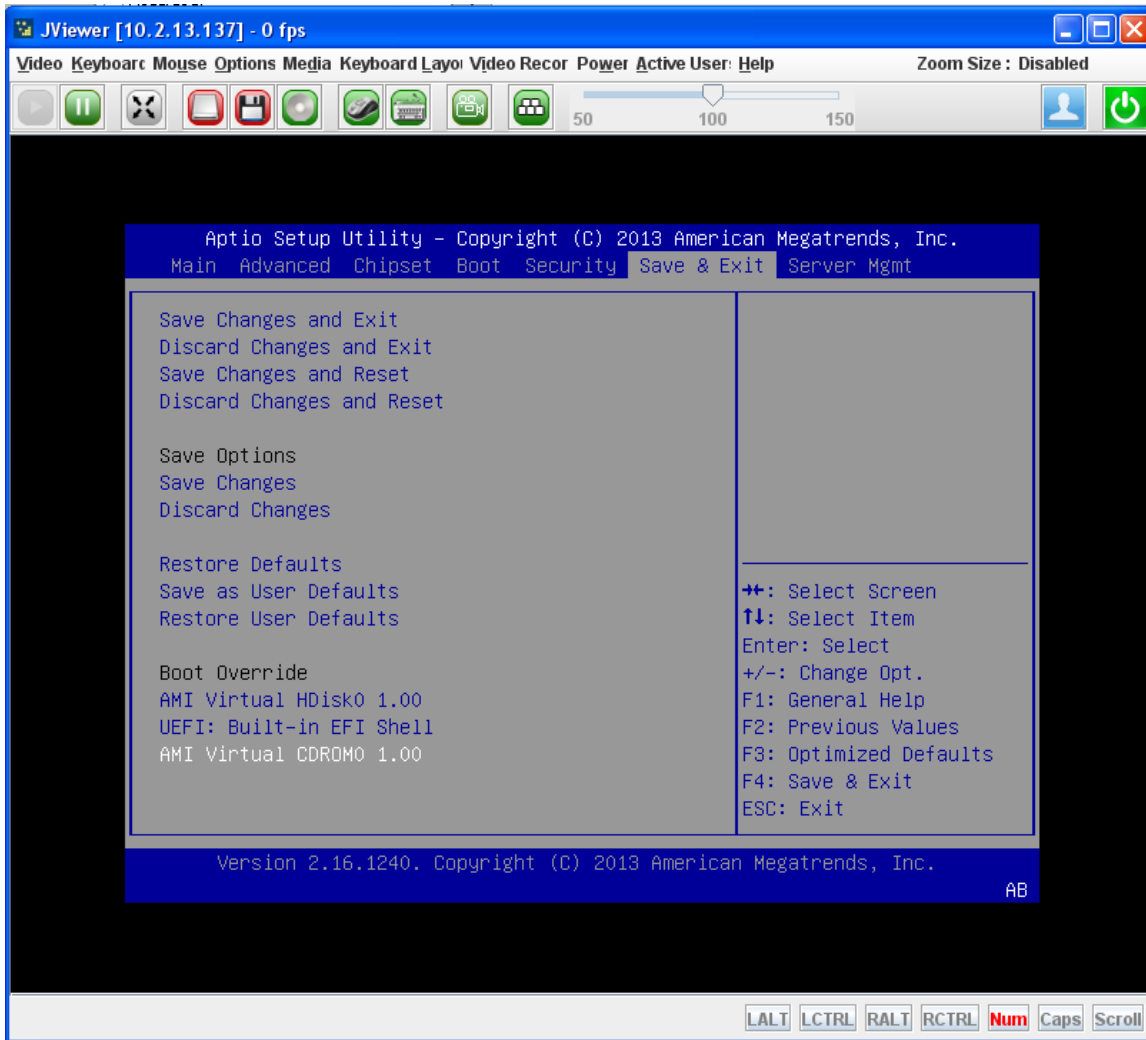
- The BIOS setup utility screen displays. Use right arrow key to navigate to the Save & Exit menu.

Figure 6: BIOS Setup Utility



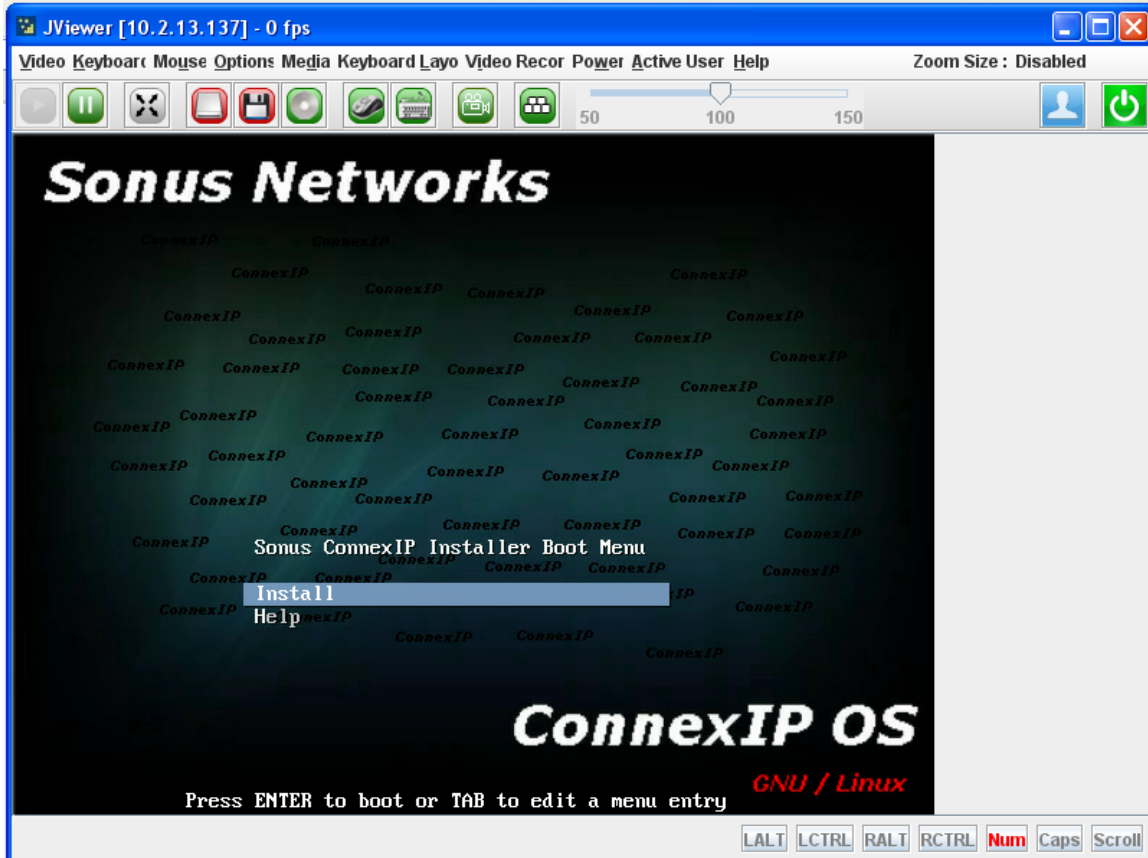
10. Select **AMI Virtual CDROM0 1.00** from Save & Exit menu to boot from the virtual CD drive. This instructs the server to boot from the redirected ConnexIP OS ISO image.

Figure 7: Booting from Virtual CD Drive



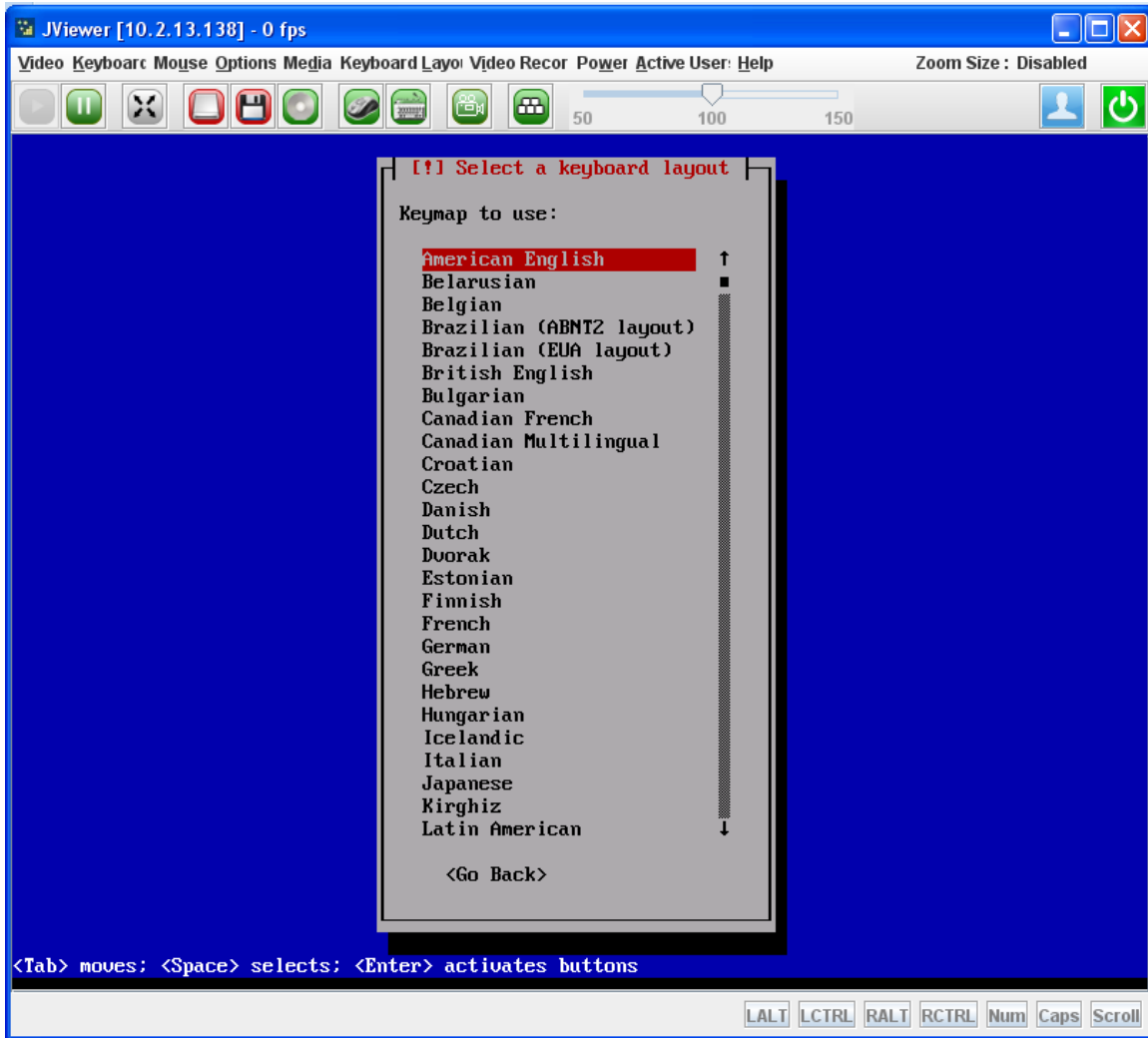
11. Select Install and press <Enter> to start the installation.

Figure 8: Sonus ConnexIP Installer Boot Menu



12. Select American English and press <Enter>.

Figure 9: Keymap Menu



13. The automated installation process starts. This process takes approximately 30 to 40 minutes.

Figure 10: Partitions Formatting Screen

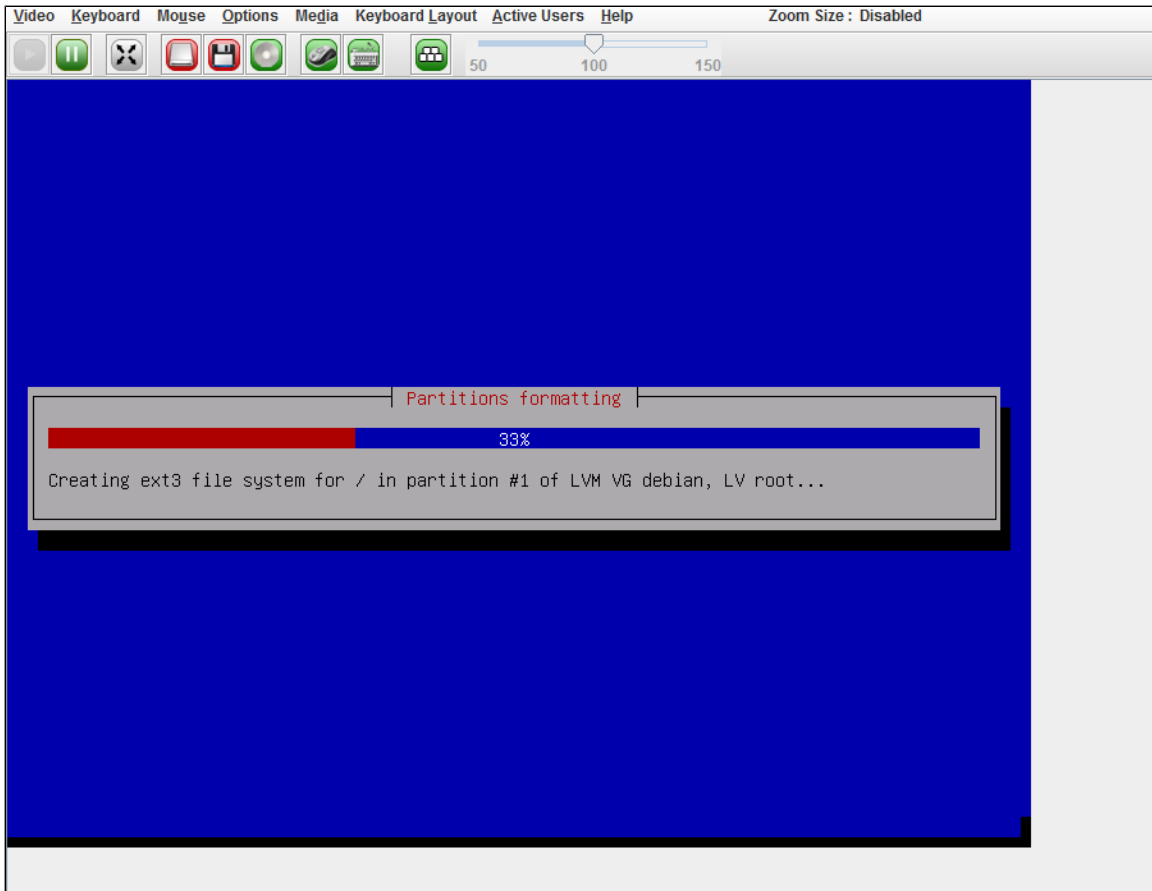


Figure 11: Installing the Base System

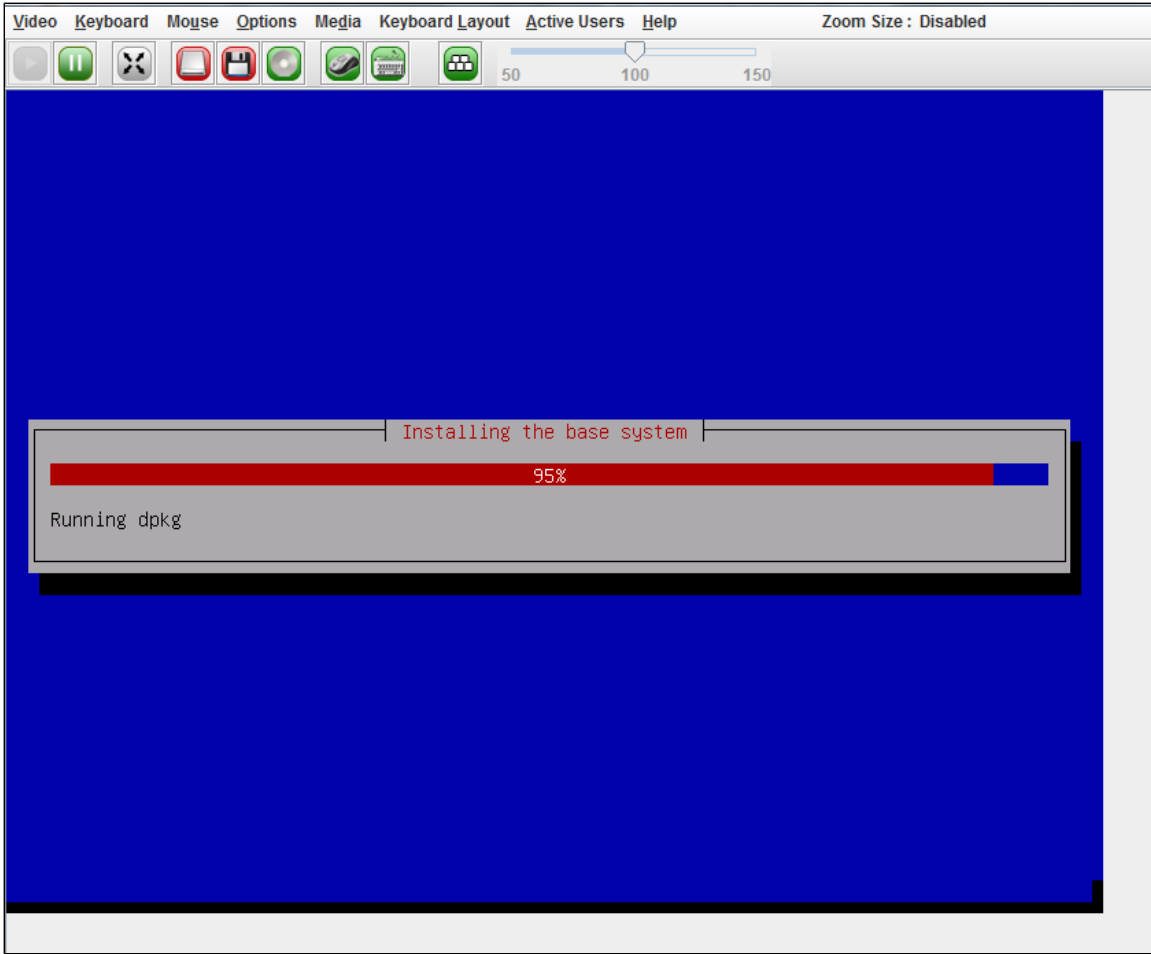


Figure 12: Selecting and Installing Software

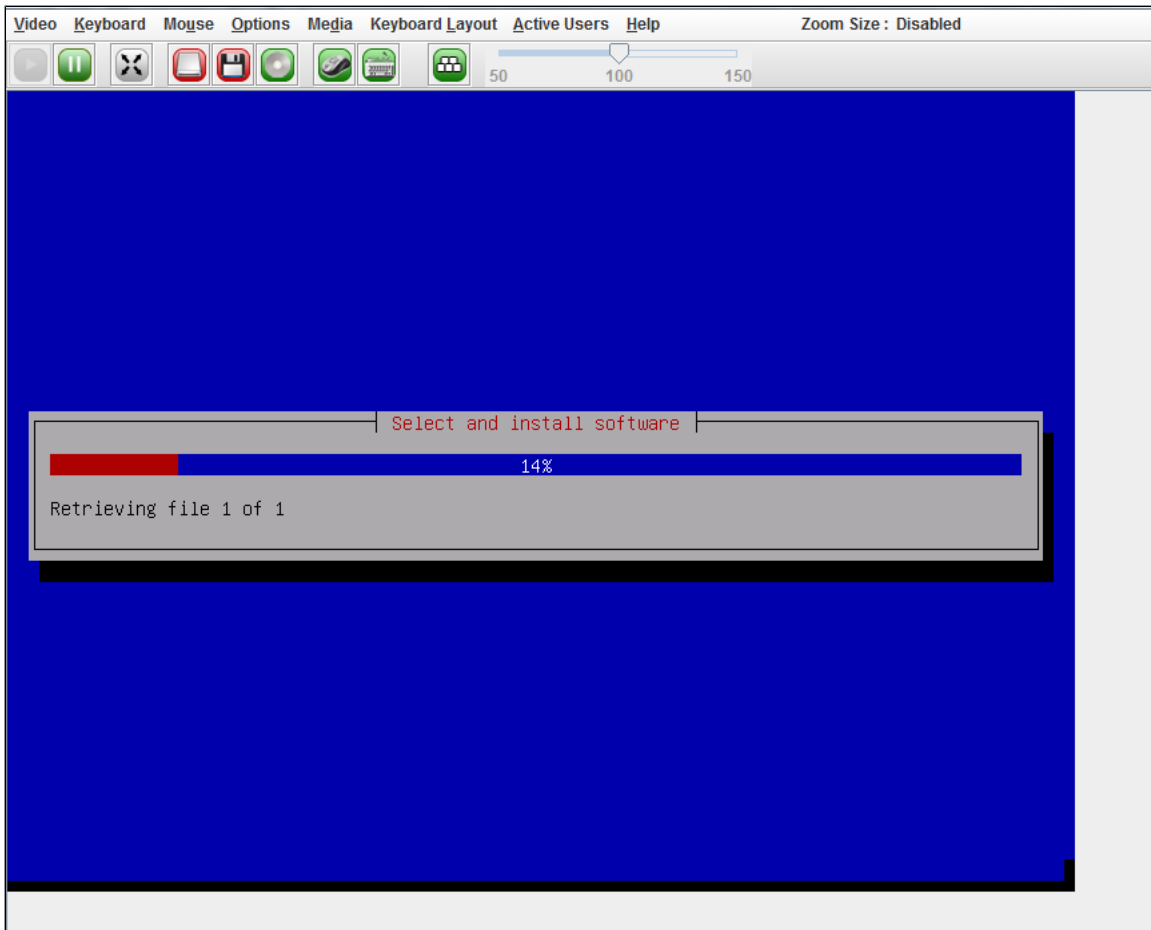


Figure 13: Copying SBC Package

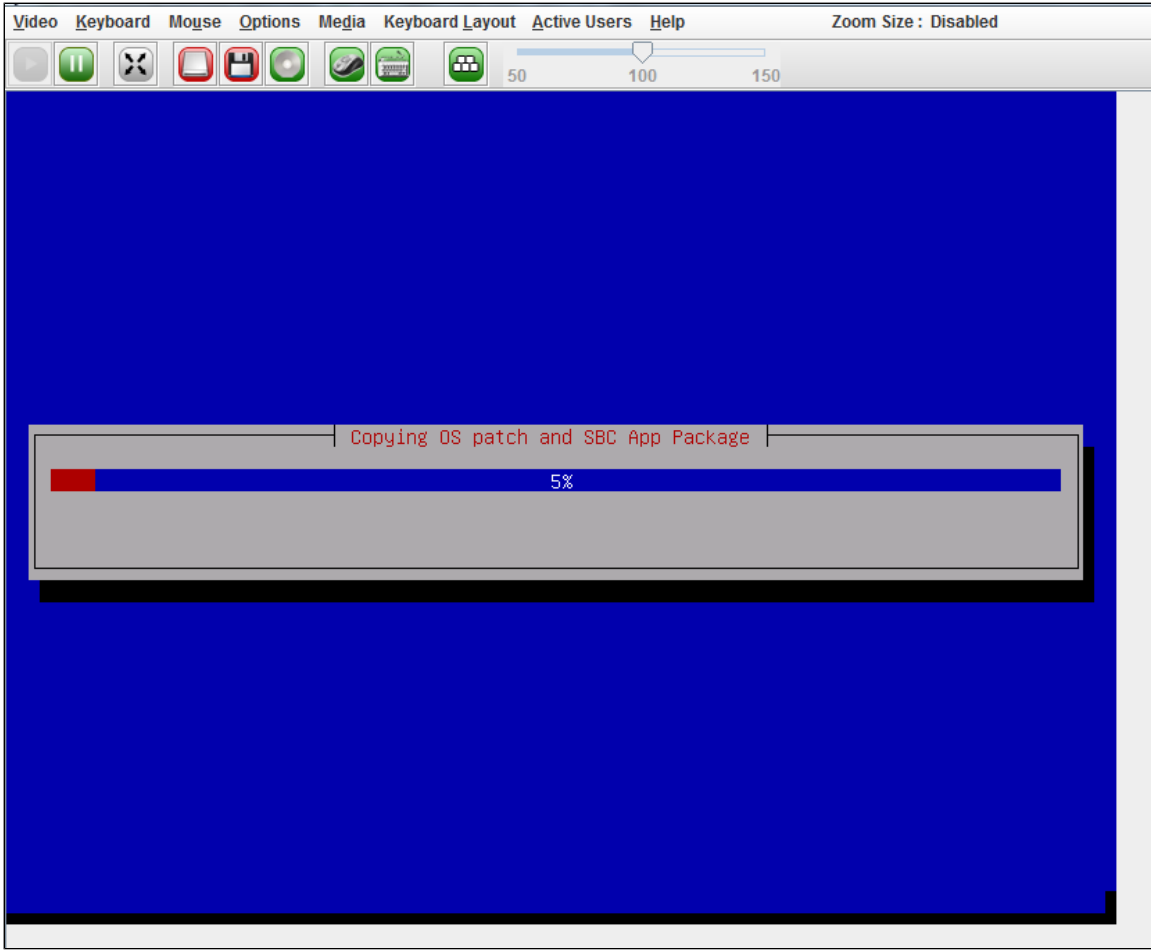
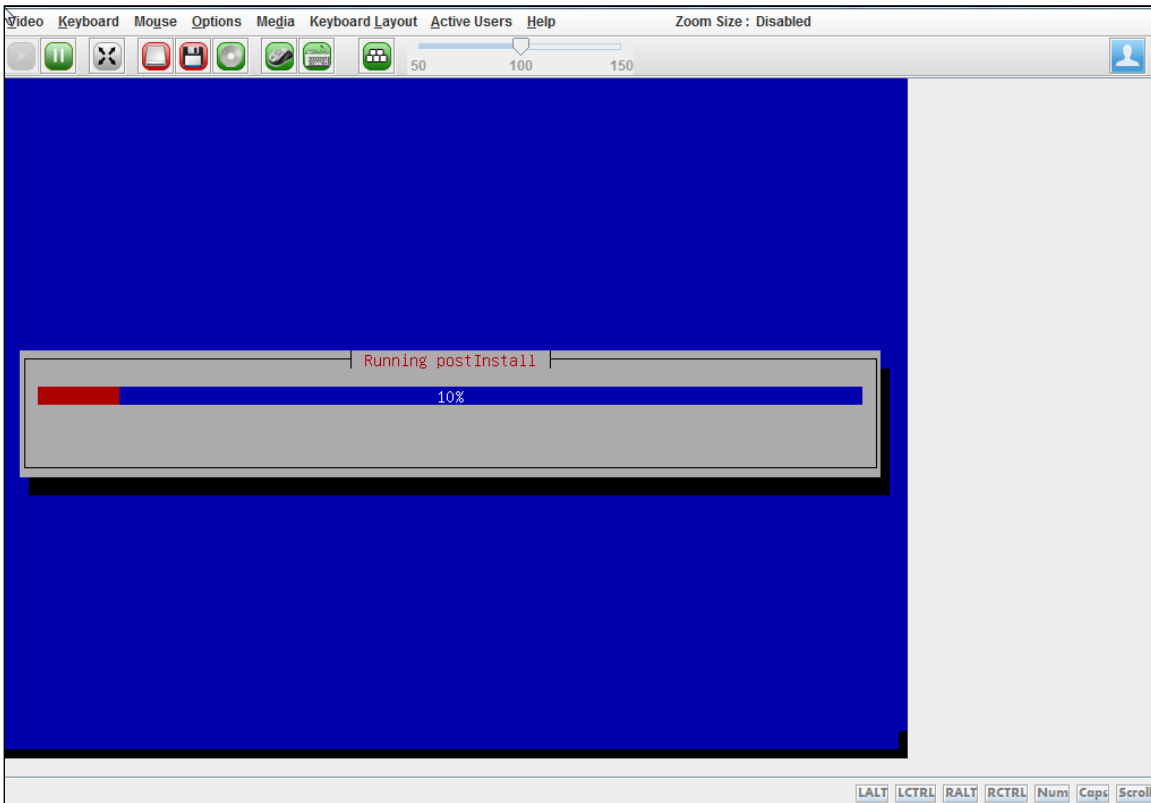
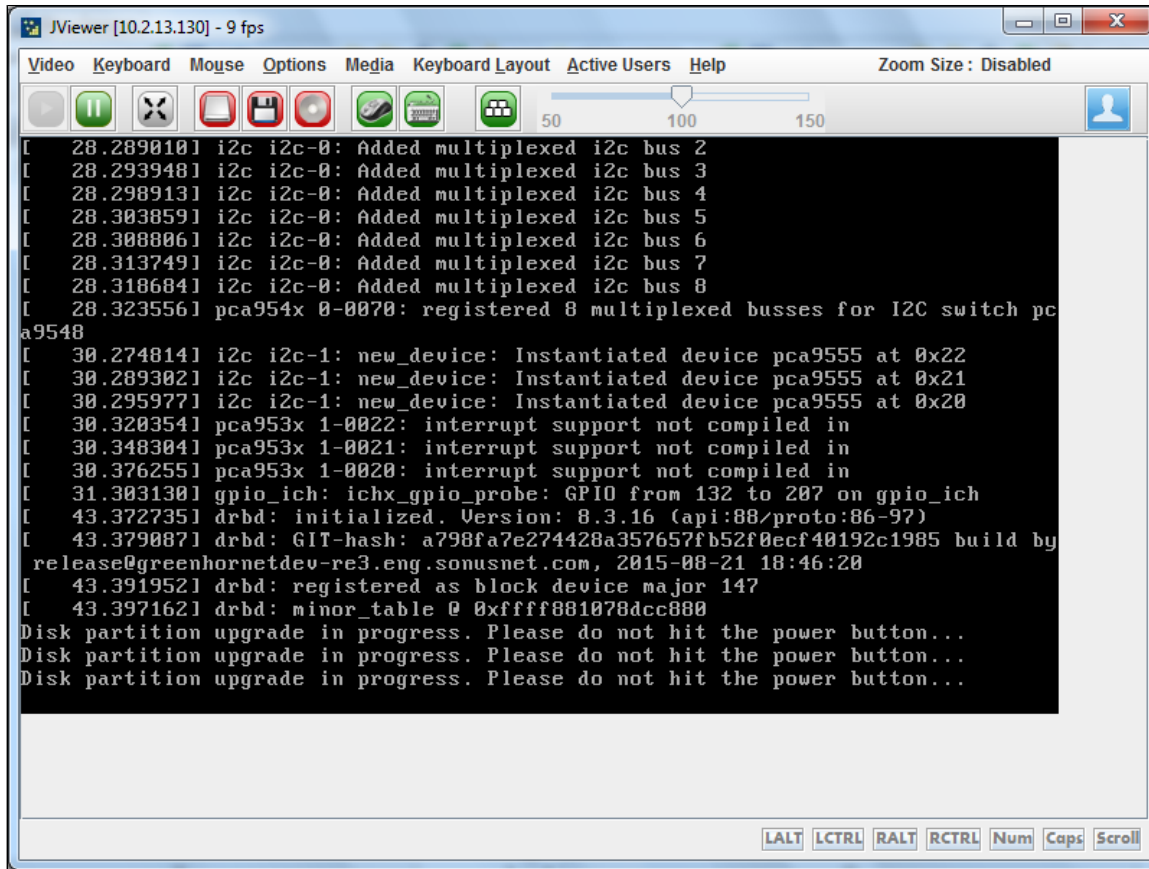


Figure 14: Running Post Install



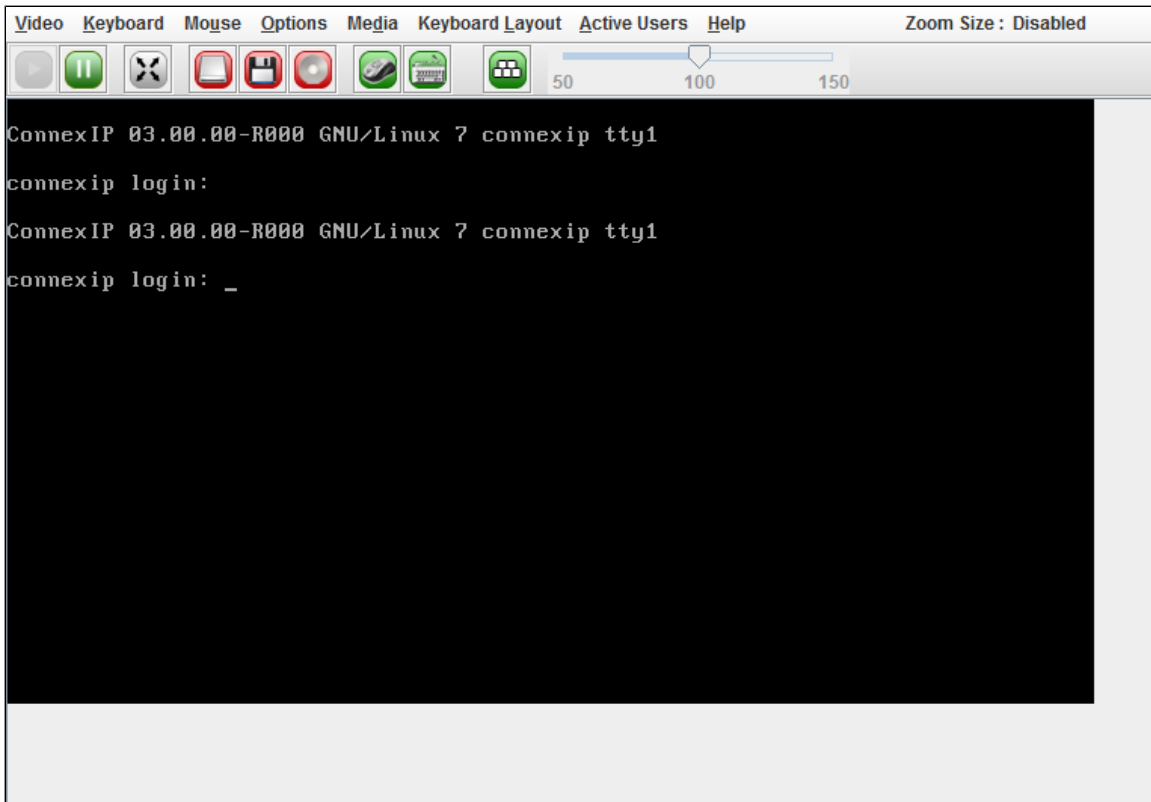
Once the installation is complete, the disk partition upgrade starts. At this stage, DO NOT power off the system.

Figure 15: Disk Partitioning



Once the system reboots, the ConnexIP login screen appears on the screen.

Figure 16: ConnexIP Login Screen



This concludes the ConnexIP OS Installation/Re-installation process.

14. Close the JViewer window.

Continue to install the desired SBC Application build. Refer to [Installing SBC Application](#) to know more.

