


# Setting the Active Partition

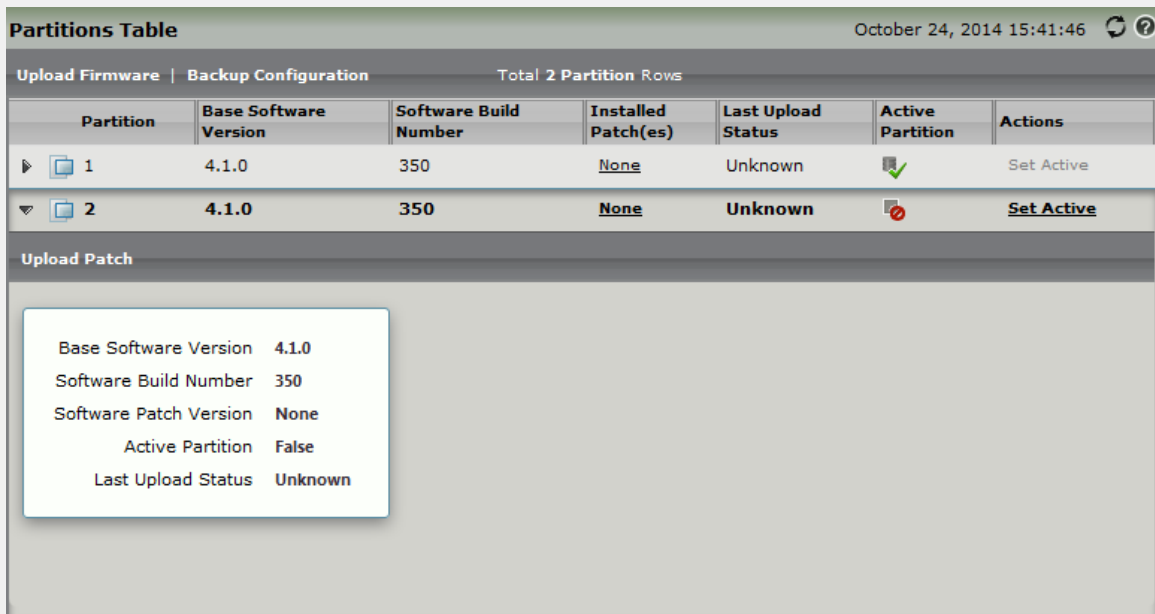
Once you have updated the inactive partition either by [Upgrading the Inactive Partition – SBC Edge](#) or by [Uploading Firmware Patches](#), new software does not take effect until you activate newly updated partition. When you activate the partition, the system must reboot to boot from the desired partition. All configuration is preserved when you activate the partition.

 The instructions outlined include rebooting the Sonus SBC Edge/SBC SWe Lite. This will disrupt call services on the Sonus SBC Edge/SBC SWe Lite and should only be completed during a planned service outage.

## To set the Active Partition:

1. In the WebUI, click the **Settings** tab.
2. In the left navigation pane, go to **System > Software Management > Application Partitions**.

Figure 1: Application Partitions



The screenshot shows the 'Partitions Table' in the web interface. The table has columns for Partition, Base Software Version, Software Build Number, Installed Patch(es), Last Upload Status, Active Partition, and Actions. Partition 1 is active, and Partition 2 is inactive. A popup window shows details for Partition 2, including Base Software Version (4.1.0), Software Build Number (350), Software Patch Version (None), Active Partition (False), and Last Upload Status (Unknown).

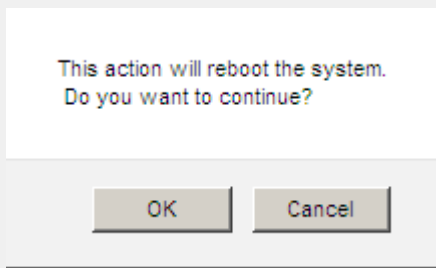
Partition	Base Software Version	Software Build Number	Installed Patch(es)	Last Upload Status	Active Partition	Actions
1	4.1.0	350	None	Unknown	<input checked="" type="checkbox"/>	Set Active
2	4.1.0	350	None	Unknown	<input type="checkbox"/>	Set Active


Upload Patch

Base Software Version 4.1.0  
Software Build Number 350  
Software Patch Version None  
Active Partition False  
Last Upload Status Unknown

3. Click the **Set Active** link in the row entry associated with the partition that you wish to activate.  
The inactive partition is the row entry listed without a tick mark under the 'Active Partition' column
4. You will be prompted to reboot the Sonus SBC Edge/SBC SWe Lite, click **OK**.

Figure 2: Reboot Prompt



 It will take up to 15 seconds for the action to be processed, and you will not see any visible indication during this short period of time.

5. The following status message will be dispatched indicating that the system is rebooting off of the new partition

**Figure 3:** Status Message



**Helpful Tip**

Upon completion, you will be automatically redirected to the [Login screen](#). Verify that you are booting from the new partition either by checking the active partition, or by [Viewing the Software Version](#).

