

Configuring SBC 5xx0 BMC for Remote Access

! Due to an IPMI vulnerability, Sonus recommends not connecting the BMC Ethernet port to an external network unless the network is deemed well-protected.

[Reference: NIST [National Vulnerability Database website](#)]

Sonus ships the SBC 5000 series pre-configured with the default IP address “169.254.77.1” to facilitate out of the box access to the BMC web interface. Configure your PC/Laptop IP address to be on this network so that it can communicate with SBC 5000 series platform. To access the BMC web application, connect the Field Service Port to the PC configured with the pre-configured IP address and type the IP address in a web browser.

i Info

See [Introduction to EMA](#) for a list of supported browsers and operating systems.

To configure BMC for remote access:

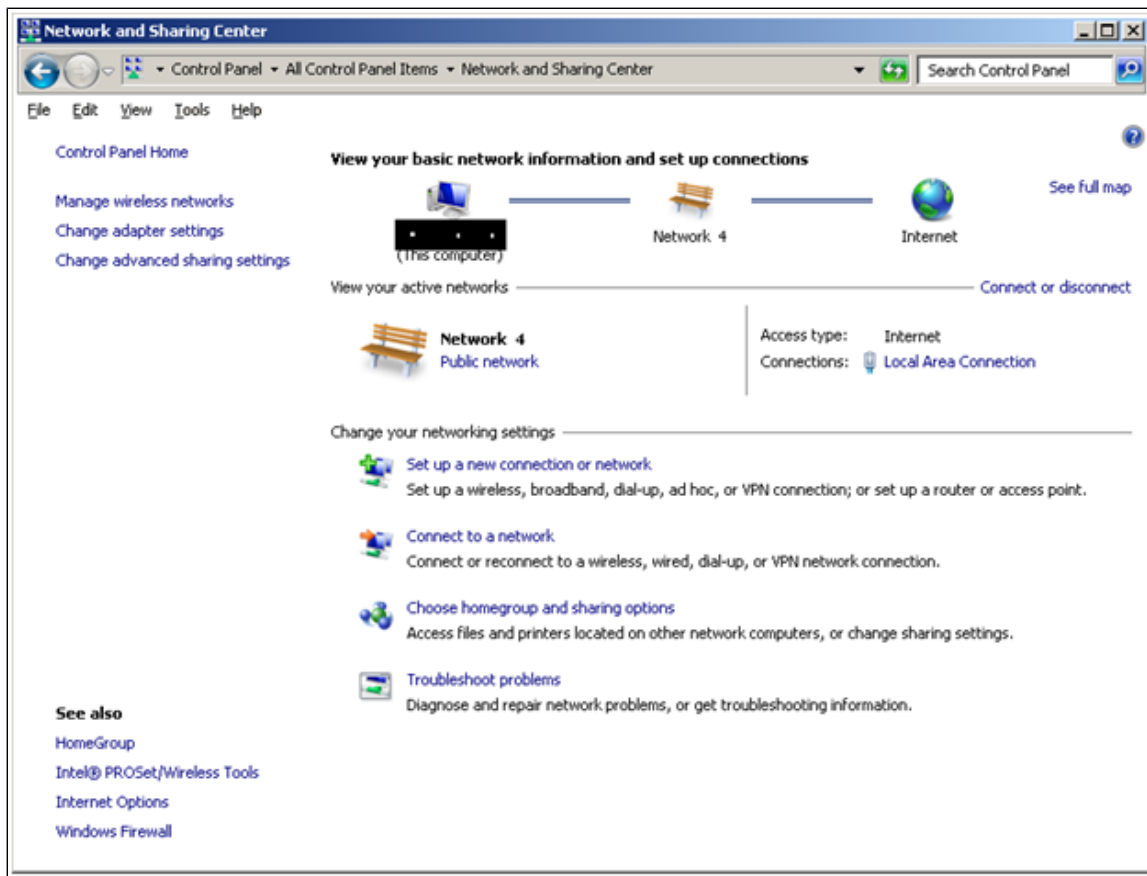
1. Connect your PC/laptop via an Ethernet cable to the Field Service Port (FSP) at the back of SBC (Here it is 5210) and power it up (if not already on).

Figure 1: Connecting PC to FSP



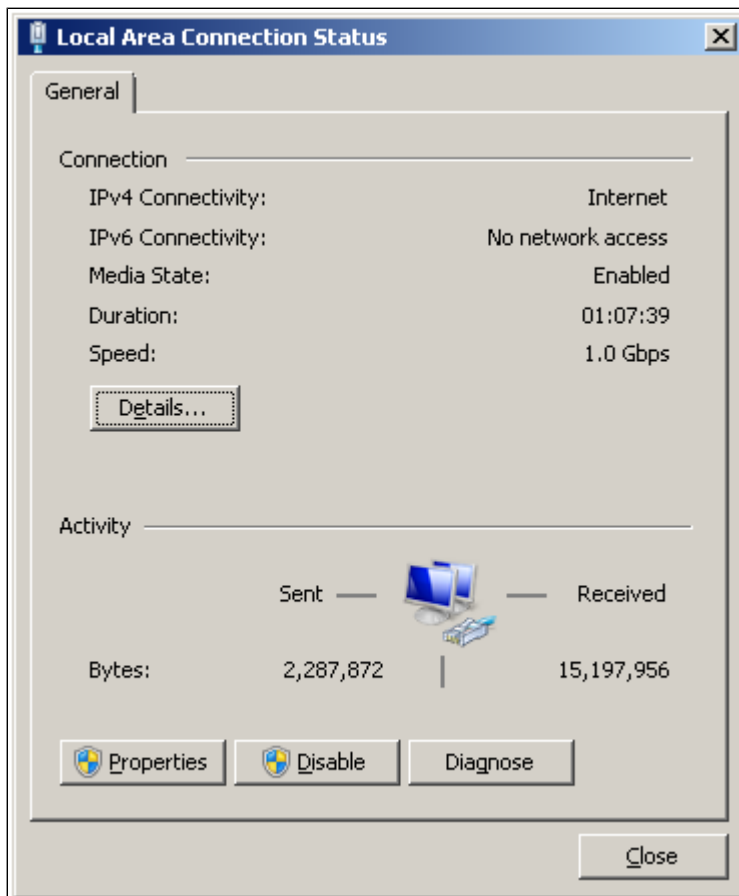
2. Verify that both link LEDs at the FSP are lit. If only the left LED is lit, your PC/laptop network adapter link speed may be set to 10Mbps. Check the PC/laptop Device Manager, and if necessary set your PC/laptop link speed to 100 Mbps/Full Duplex.
3. If your PC/laptop uses DHCP and Automatic Private IP Address setting (default setting), the PC/laptop is assigned an IP address in the same subnet as the initial BMC IP; therefore proceed to [Step 9](#). If your PC/laptop does not use DHCP, proceed to the [Step 4](#) to configure a static IP.
4. In Windows 7 operating system, open **Control Panel > Network and Sharing Center**. The Network and Sharing Center window displays.

Figure 2: Network and Sharing Center



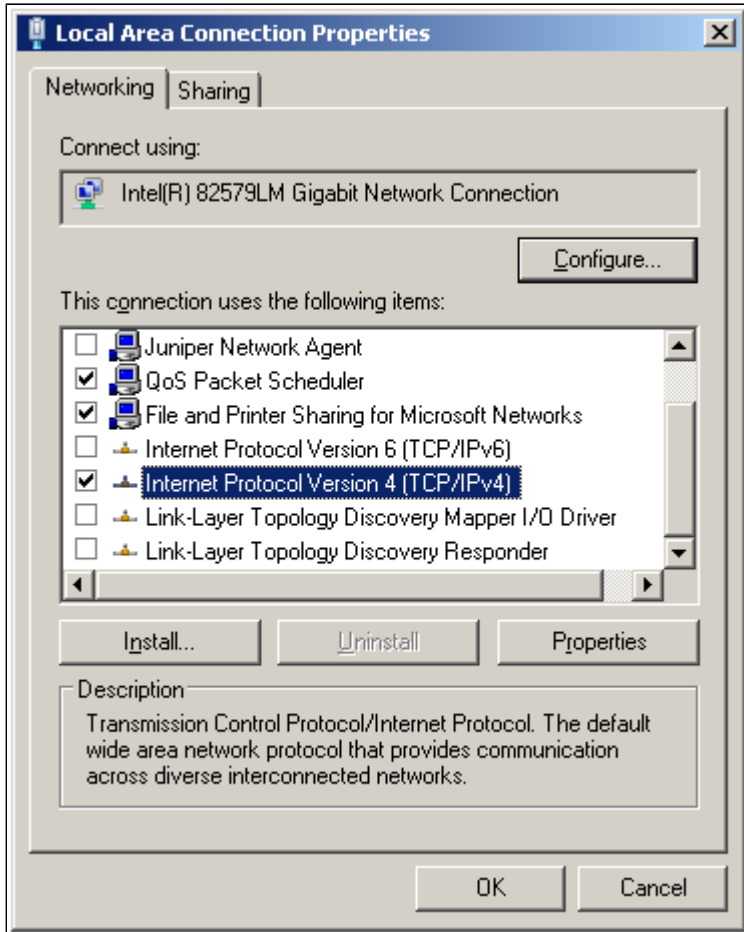
5. Click **Local Area Connection** link. The Local Area Connection Status screen displays.

Figure 3: Local Area Connection Status



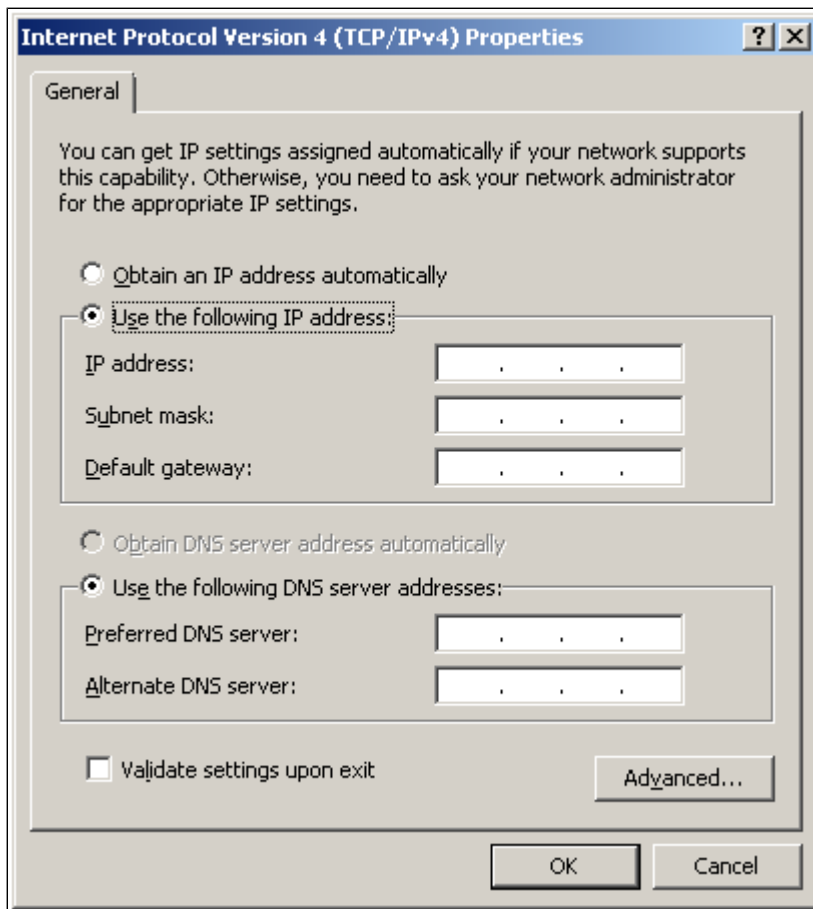
6. Click **Properties**. The LAN Properties screen displays.

Figure 4: Local Area Connection Properties



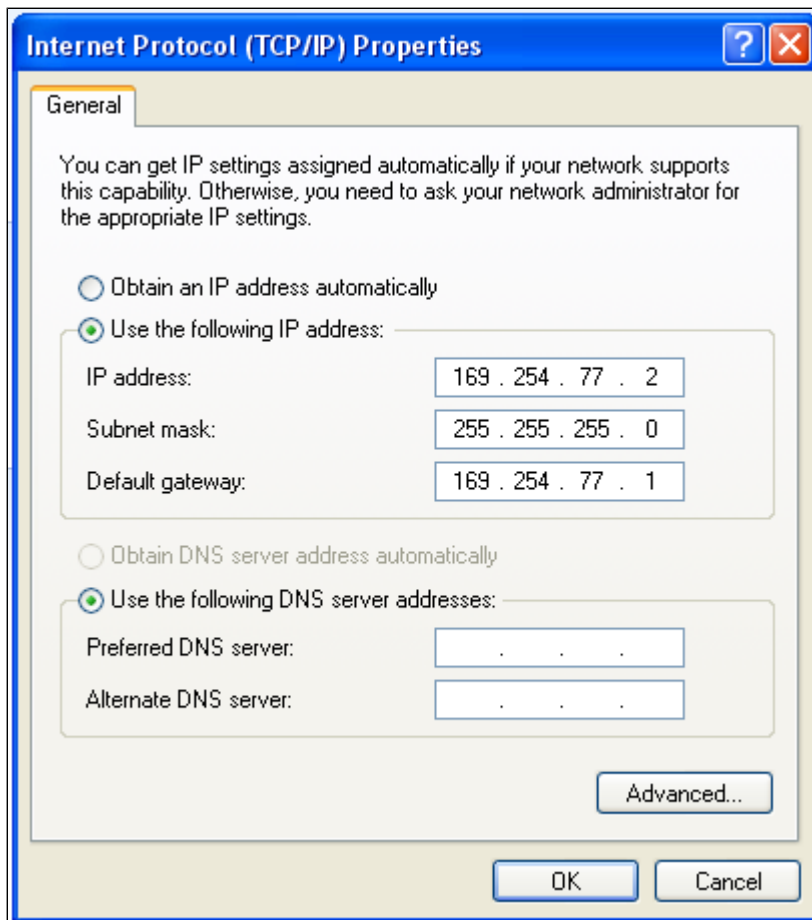
7. Select "Internet Protocol Version 4 (TCP/IPv4)" option and click **Properties**. The Internet Protocol Version 4 (TCP/IPv4) Properties screen appears.

Figure 5: IPv4 Properties Screen



8. Select **Use the following IP addresses** option and input the **IP address**, **Subnet mask**, and **Default gateway**. Click **OK**.

Figure 6: Configuring IP Address



9. Type the pre-configured IP address "169.254.77.1" in a web browser (Firefox is the recommended browser. If using Internet Explorer, you must manually add "https://169.254.77.1" as a trusted site), and connect to the BMC web interface.

! The SBC 5000 is delivered with sample self-signed X.509 certificates. Please be aware that even though these sample certificates will allow you to use HTTPS to access the SBC 5000 from BMC and EMA interfaces, using this protocol with the sample certificates is not a truly secure access method. If your organization requires a more secure access, see [Generating PKI Certificates](#).

10. Login to the SBC 5000 BMC GUI.

At the prompt, enter:

```
Username: root
Password: superuser
```

The SBC 5000 BMC main screen is displayed.

11. Click **Configuration > Network**. The Network Setting window is displayed.

Figure 7: BMC Network Screen

Dashboard **Configuration** Remote Control Firmware Update Platform Manager Ports

Network Settings

Manage network settings of the device.

LAN Interface

MAC Address

IPv4 Configuration

IPv4 Address

Subnet Mask

Default Gateway

Security

Enable IPMI **Power Off server to Enable/Disable IPMI**

Enable JViewer

Enable SSH

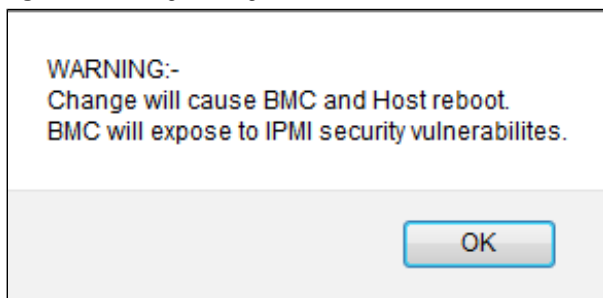
Configure the **BMC IP Address**, **Prefix** and **Default Gateway** network settings. Select **Enable JViewer** and/or **Enable SSH** options under the “Security” settings depending upon your security requirements. It is recommended to leave the **Enable IPMI** option disabled.

! **Enable IPMI** is a service impacting operation. This reboots both the BMC and the host server. The changes to any of the three security items does not occur until the **Save** button is clicked.

12. Click **Save**.

The following pop-up messages appear.

Figure 8: Warning Messages

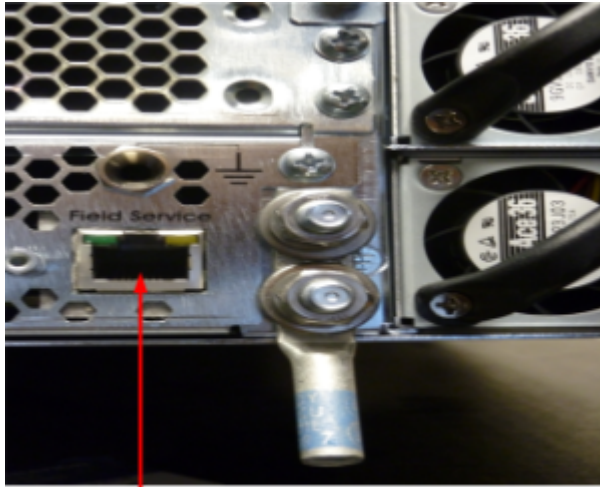


13. Click **OK** in each pop-up message to proceed.

14. Disconnect the PC/Laptop from FSP.


15. Connect the FSP of SBC 5000 to the Ethernet router on LAN segment using a CAT5 Ethernet cable to access the BMC over the network.

Figure 9: Field Service Port



Field Service Port

16. Connect a PC to the IP network that can access the BMC IP address.
17. Continue to configure network management interfaces.

 Once the real BMC address is configured, you cannot access the pre-configured BMC address. Clear the browser cache (browser-specific) and open a new browser session to reflect the changes.