

Deploying SBC with MS Lync Server

In this section:

- Introduction
- Reference Documentation

i Related articles:

- [Configuring SBC and LYNC in TCP Environment](#)
- [Configuring SBC and LYNC in TLS Environment](#)
- [Configuring SBC and LYNC in Media Environment](#)

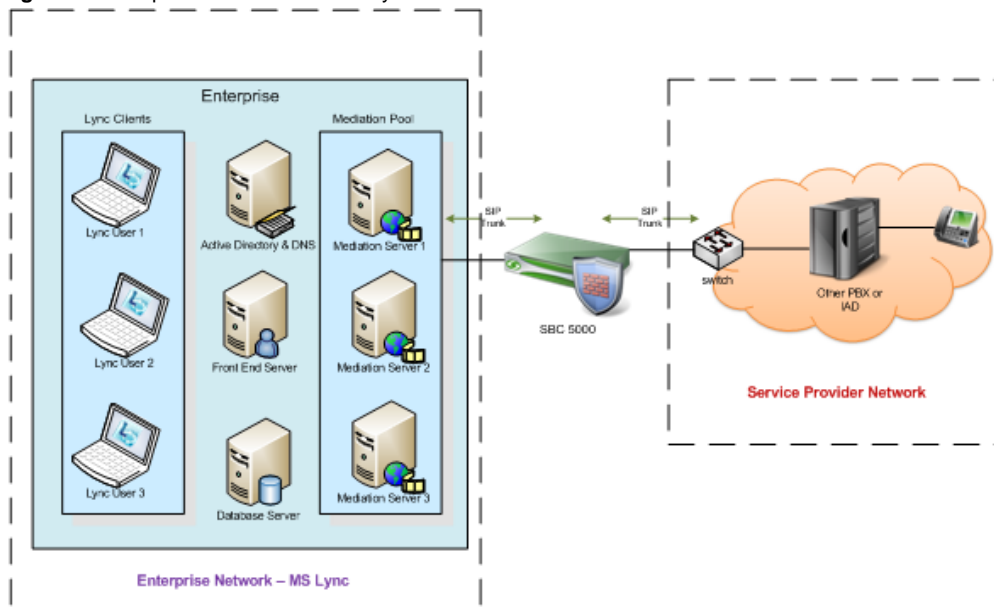
Introduction

Microsoft Lync Server 2013 offers instant messaging (IM), presence, conferencing, and telephony solutions that can support enterprise-level collaboration requirements. Microsoft Lync Server enables the enterprises to extend their IP telephony infrastructure outside their network borders and connect to the SP networks through SIP Trunking.

This section provides information on deploying the SBC Core and MS Lync with a Service Provider.

In the example scenario below, the SBC 5000 series is configured with one SIP trunk on the Lync side (Enterprise LAN) and another SIP trunk on the Service Provider's side.

Figure 1: Example of Sonus SBC with Lync 2013 Server



Reference Documentation

For feature content information, please see [SBC Using Microsoft Lync Server](#) topic.

For interoperability test (IOT) details and configuration examples, see the [Sonus product interoperability page](#).

To request IOT information, please contact us at: sonus-iot@sonusnet.com.

