

Adding a Network Adapter to a VM Instance

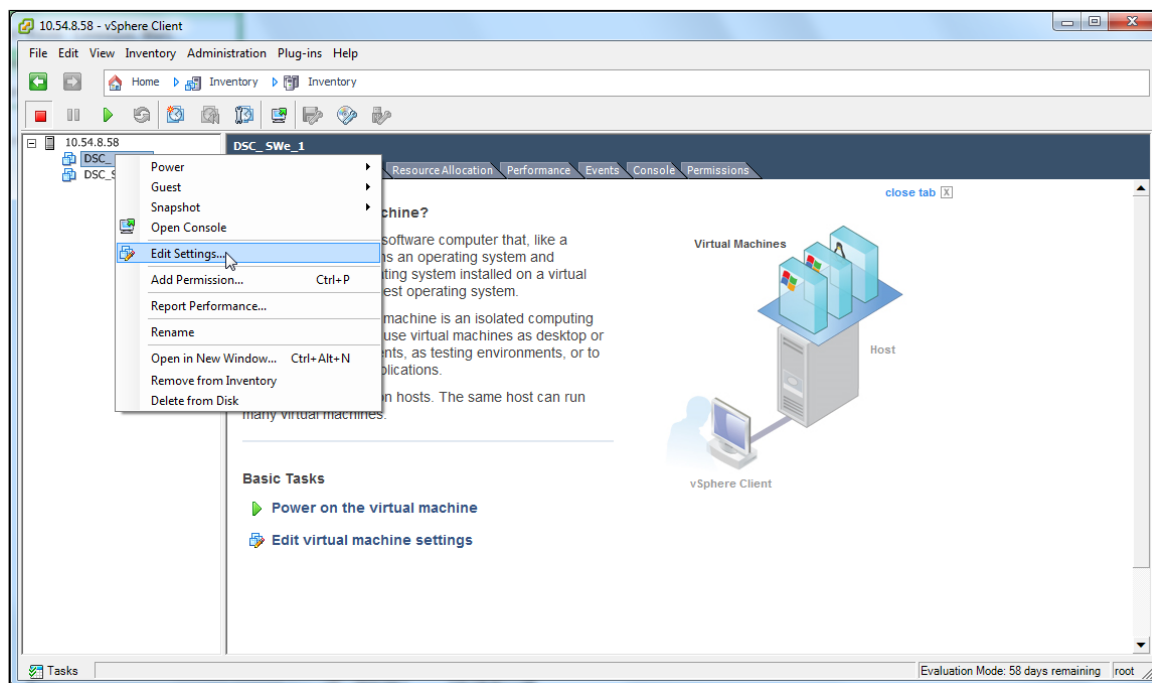
Adding a network adapter (NIC) to a virtual machine allows you to:

- bridge a network
- enhance communications
- or replace an older adapter

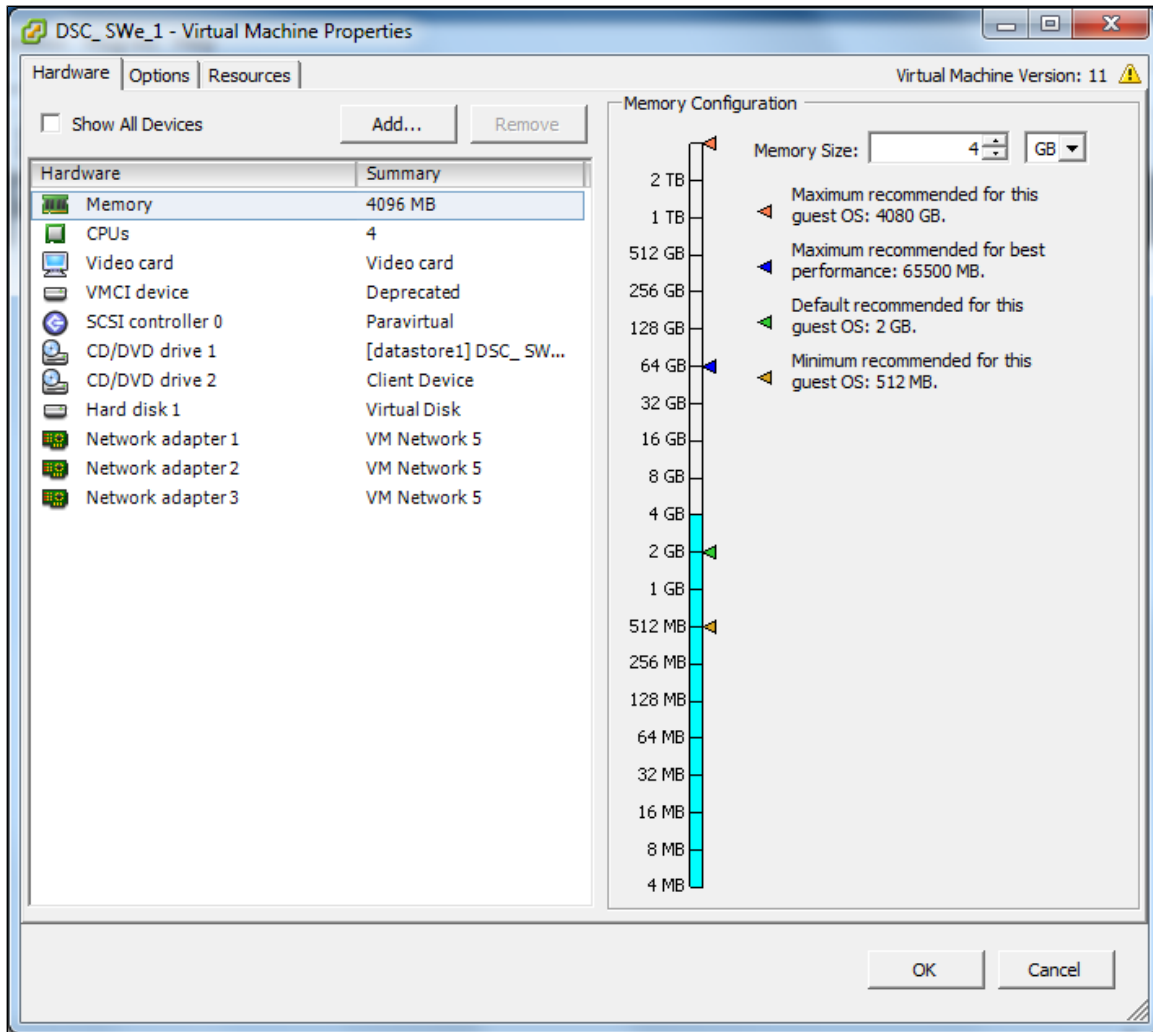
You can select the adapter type, network connection, and whether the device must be connected when the virtual machine is turned on. For more information on network adapters refer VMware documentation. This page lists the steps required to add a network adapter (NIC) to an existing VM instance. For more information on creating a virtual switch, see [Creating a Virtual Switch in VMware ESXi](#).

Perform the following steps to add a network adapter to DSC SWeVM instance:

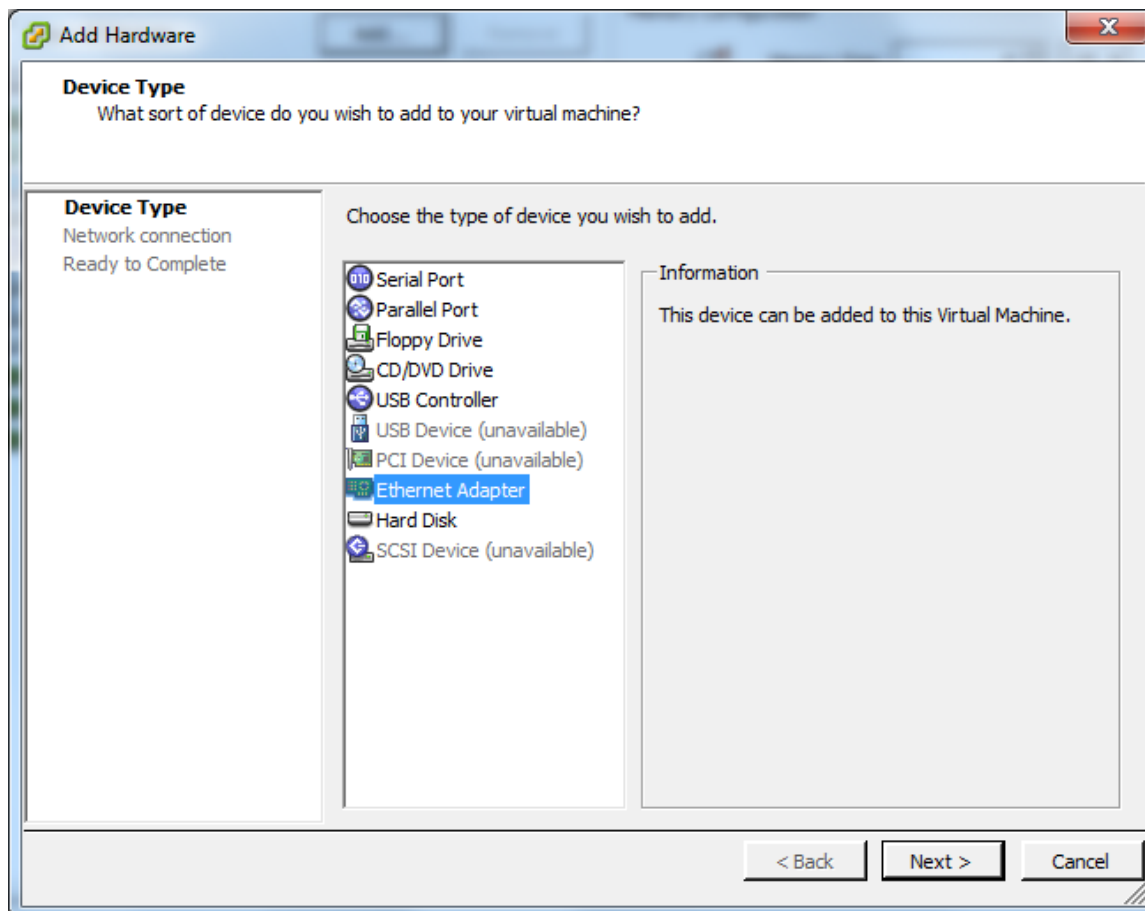
1. Login to vSphere client.
2. In the vSphere client main page right-click on the VM instance and select **Edit Settings** option:



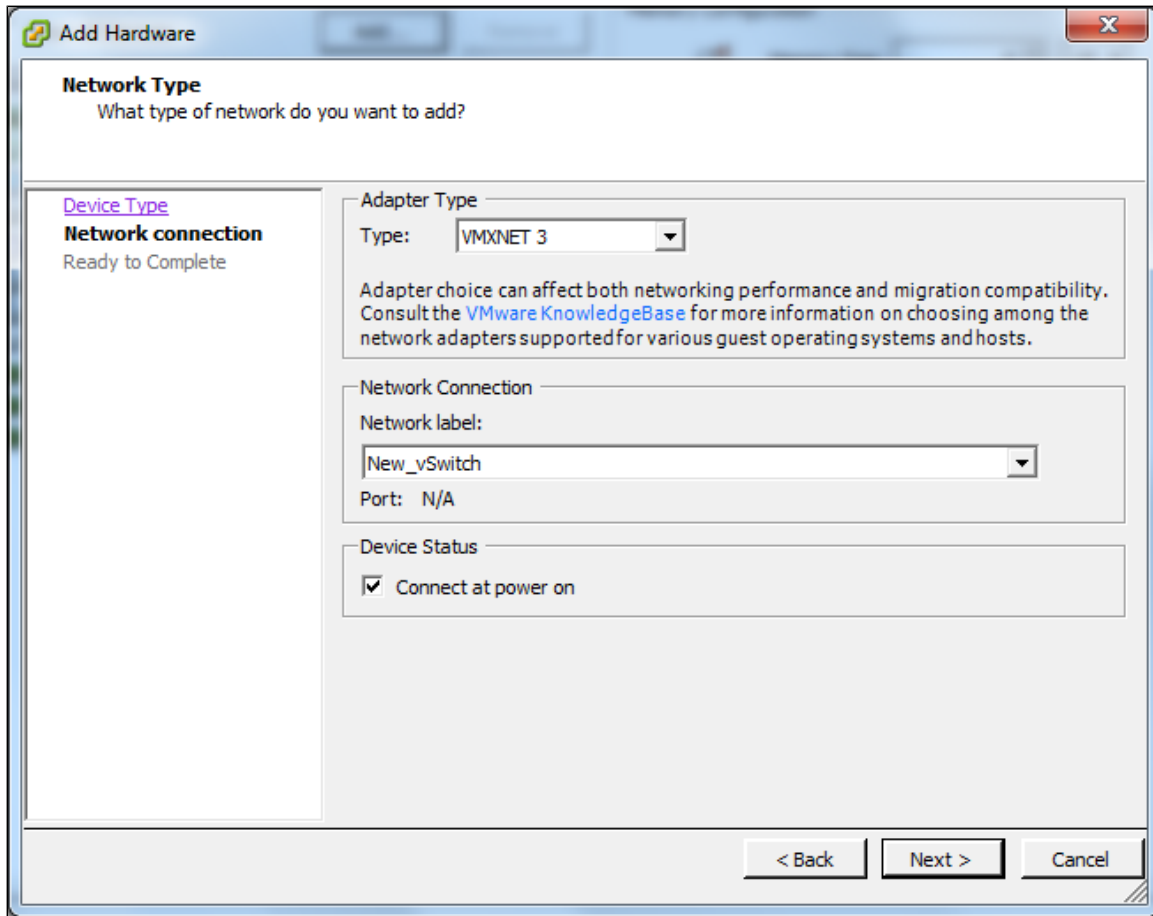
The **Virtual Machine Properties** window appears:



3. Click **Add**.

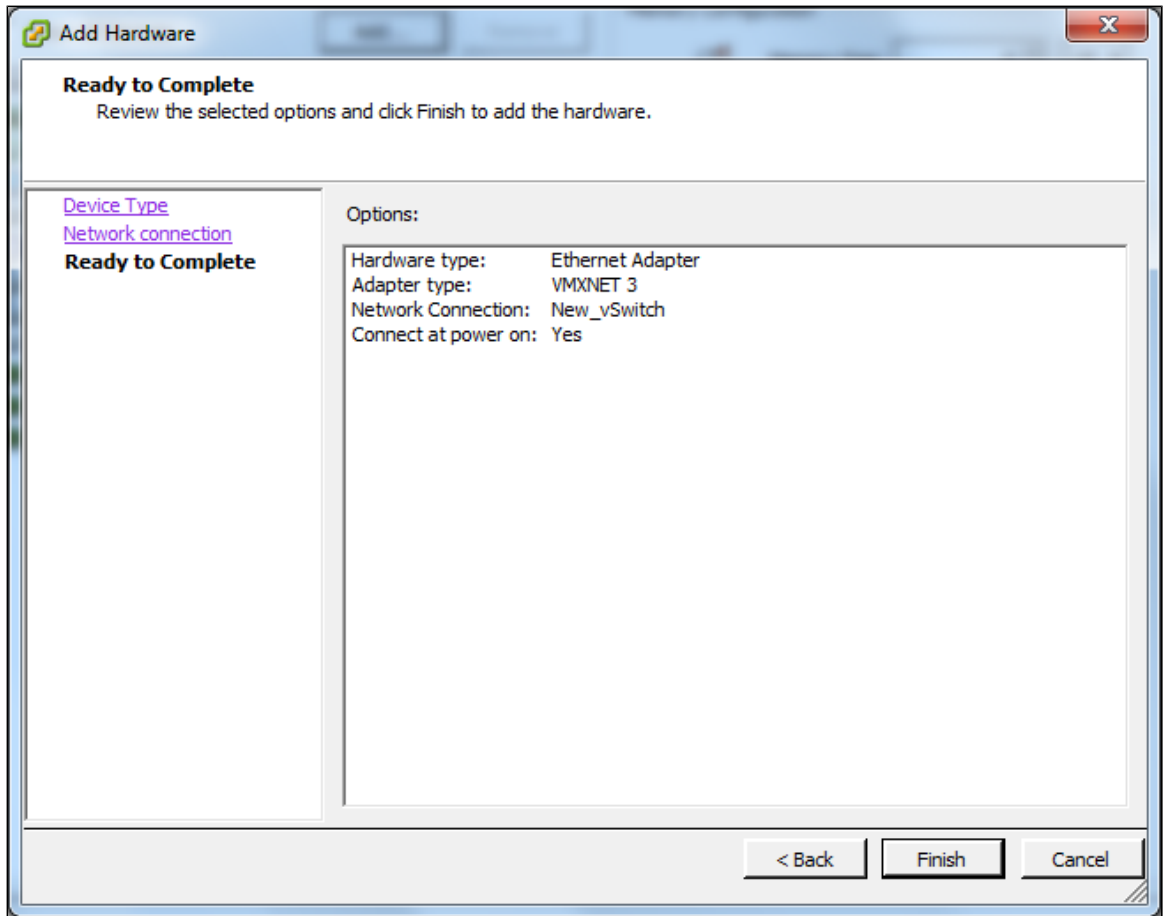


4. Select **Ethernet Adapter** as the device type and click **Next**.

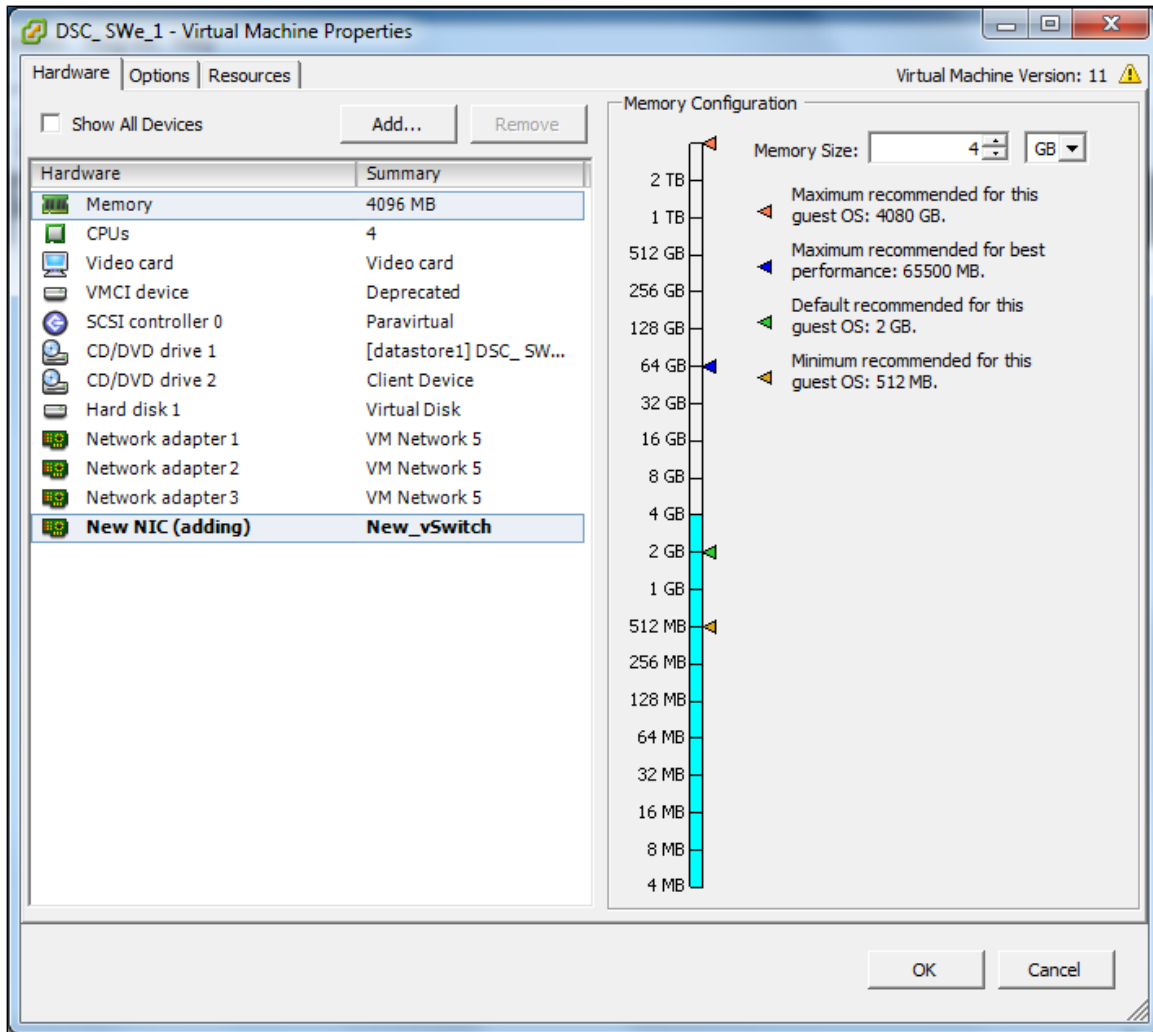


5. Perform the following steps in the **Network Type** page:

- a. Click the **Adapter Type** drop-down list and select an adapter type from the list.
- b. Click the **Network Label** drop-down list and virtual switch created for example, New_vSwitch.
- c. Select **Connect at power on** option to connect the network adapter when the VM instance is powered on.
- d. Click **Next**.



6. Click **Finish** to add the selected network adapter to the VM instance.



7. Click **OK** to complete adding the network adapter to a DSC SWeVM instance.