

Configuring SBC Edge for SNMP Management

This page describes how to configure SNMP on the SBC Edge and manage it using the [iReasoning MIB Browser](#):

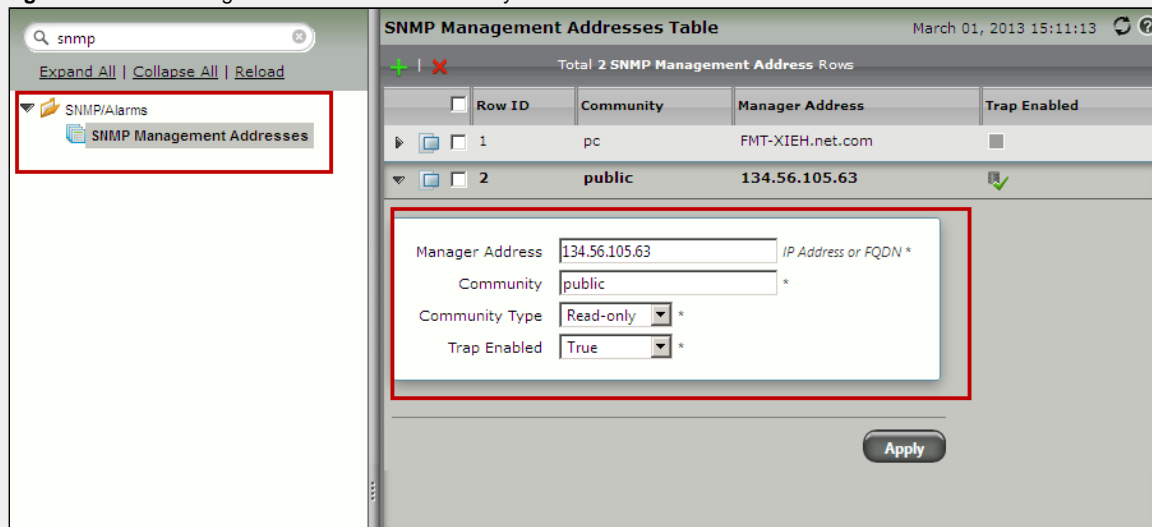
- [Step 1 - Configuring SNMP on the SBC](#)
- [Step 2 - Installing an SNMP Management Client](#)
- [Step 3 - Start Managing SBC via SNMP](#)

Step 1 - Configuring SNMP on the SBC

The SBC Edge [SNMP Management Address Table](#) entry should be created and configured with following information:

- **SNMP Manager Address:** IP address or the FQDN of the SNMP manager when a **MIB browser** is running.
- **Community:** Enter a desired community name. In this exercise we use **public** as the community name.
- **Community Type:** Must be set to **Read-only**.
- **Trap Enabled:** Not required but for this exercise we are setting it up as **True**.

Figure 1: SNMP Management Addresses Table Entry



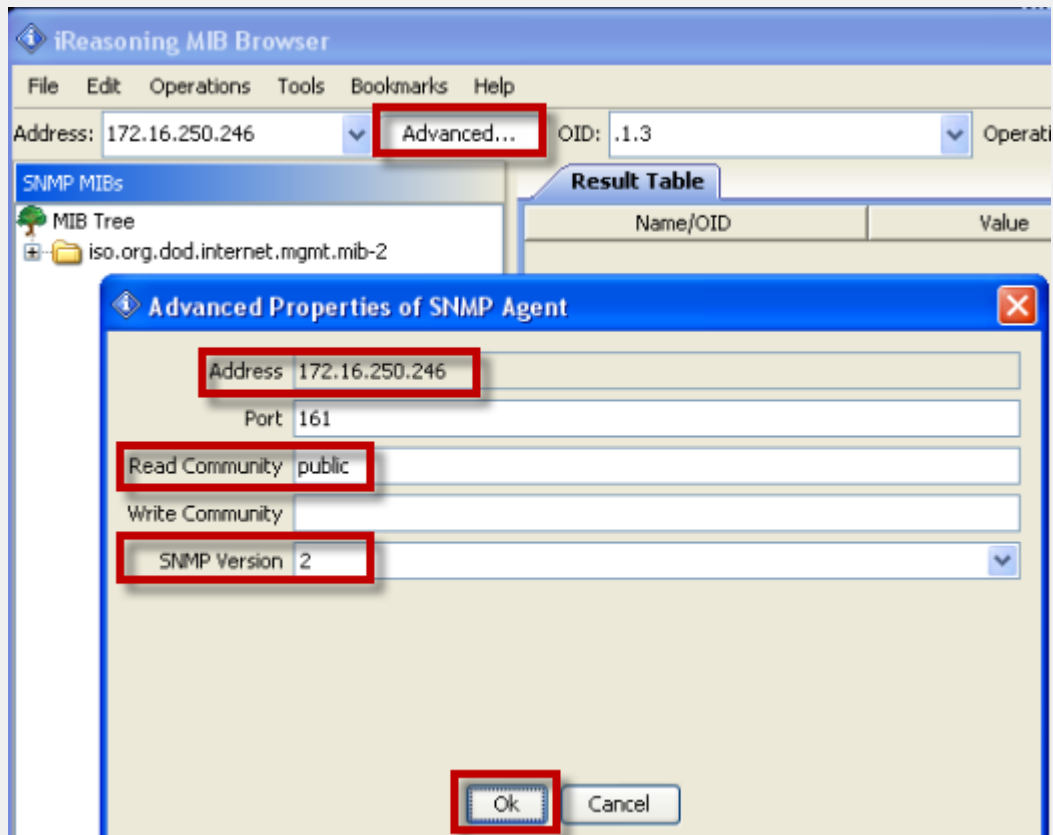
Step 2 - Installing an SNMP Management Client

There are a various number of MIB Browsers available to download and use on the internet. For this exercise, we will be using a free edition of the [iReasoning MIB Browser](#).

Follow the steps below to install, configure, and use the [iReasoning MIB Browser](#):

1. On a PC that is dedicated to be the **SNMP Manager** download [iReasoning MIB Browser](#) and install using the default settings.
2. Launch iReasoning from the start menu.
3. Click the **Advanced...** button as shown below and enter the following information:
 - **Address:** IP Address of the SBC
 - **Port:** Keep the default value (161)
 - **Read Community:** public
 - **Write Community:** Leave it blank
 - **SNMP Version:** 2

Figure 2: Install SNMP Management Client

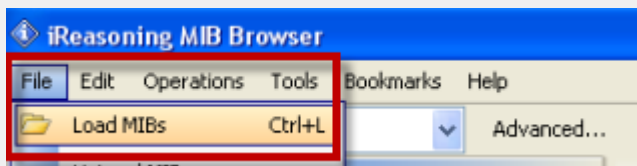


Step 3 - Start Managing SBC via SNMP

To start managing the SBC via SNMP, load the SBC's SNMP MIB files into the iReasoning MIB Browser:

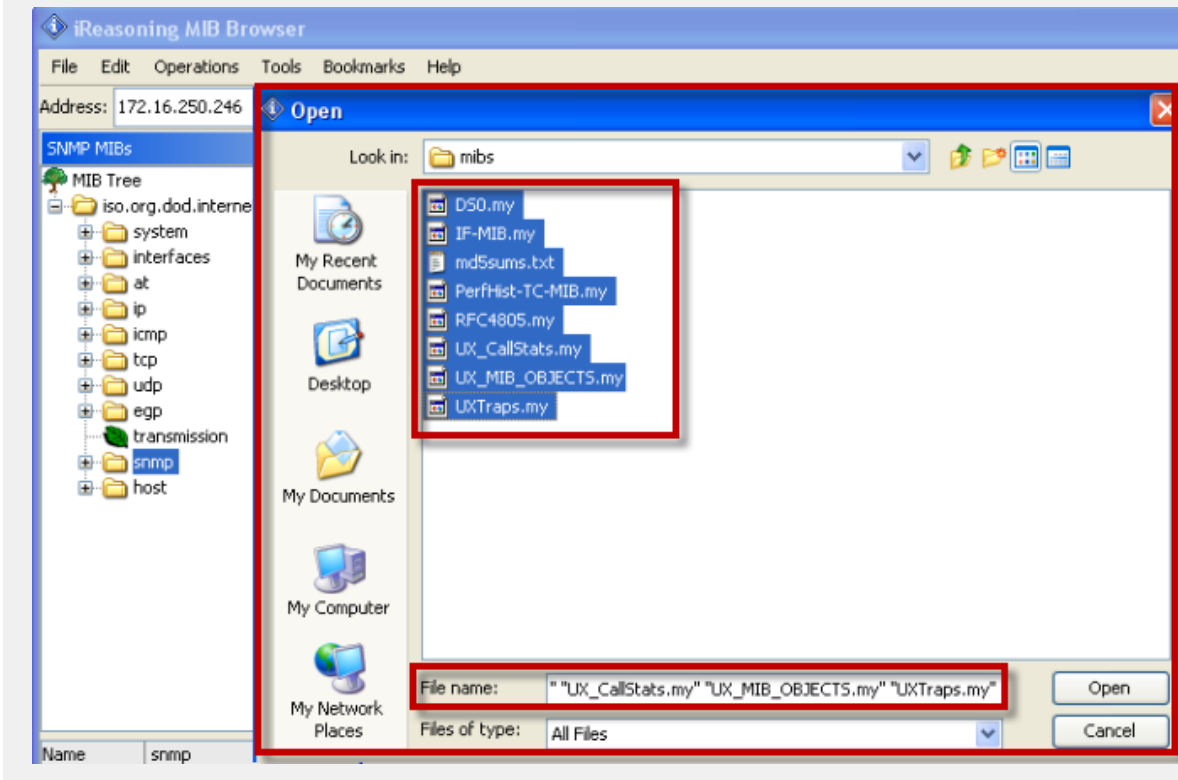
1. Download the MIB files located on the [SNMP MIBs Reference](#) page.
2. In the iReasoning MIB Browser, click the **File** menu and select **Load MIBs**.

Figure 3: Load MIBs



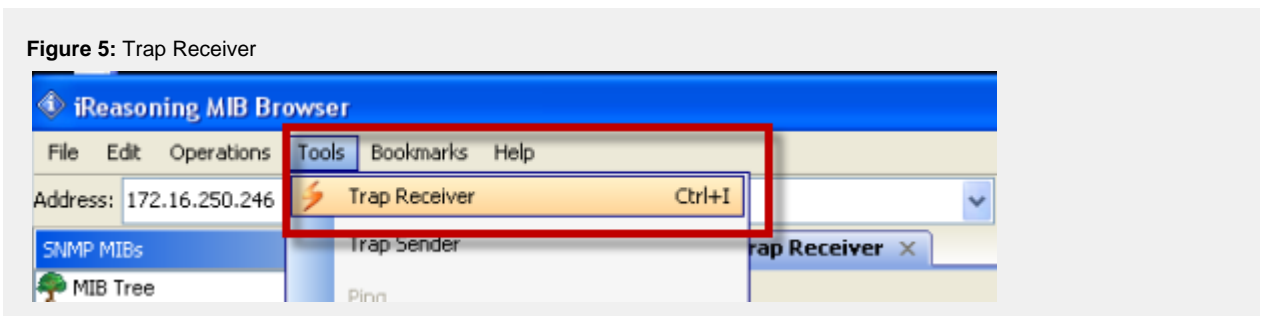
3. Browse to location where you saved the MIB files obtained in the initial step.
4. Select all MIB files and click **Open**.

Figure 4: Open Files



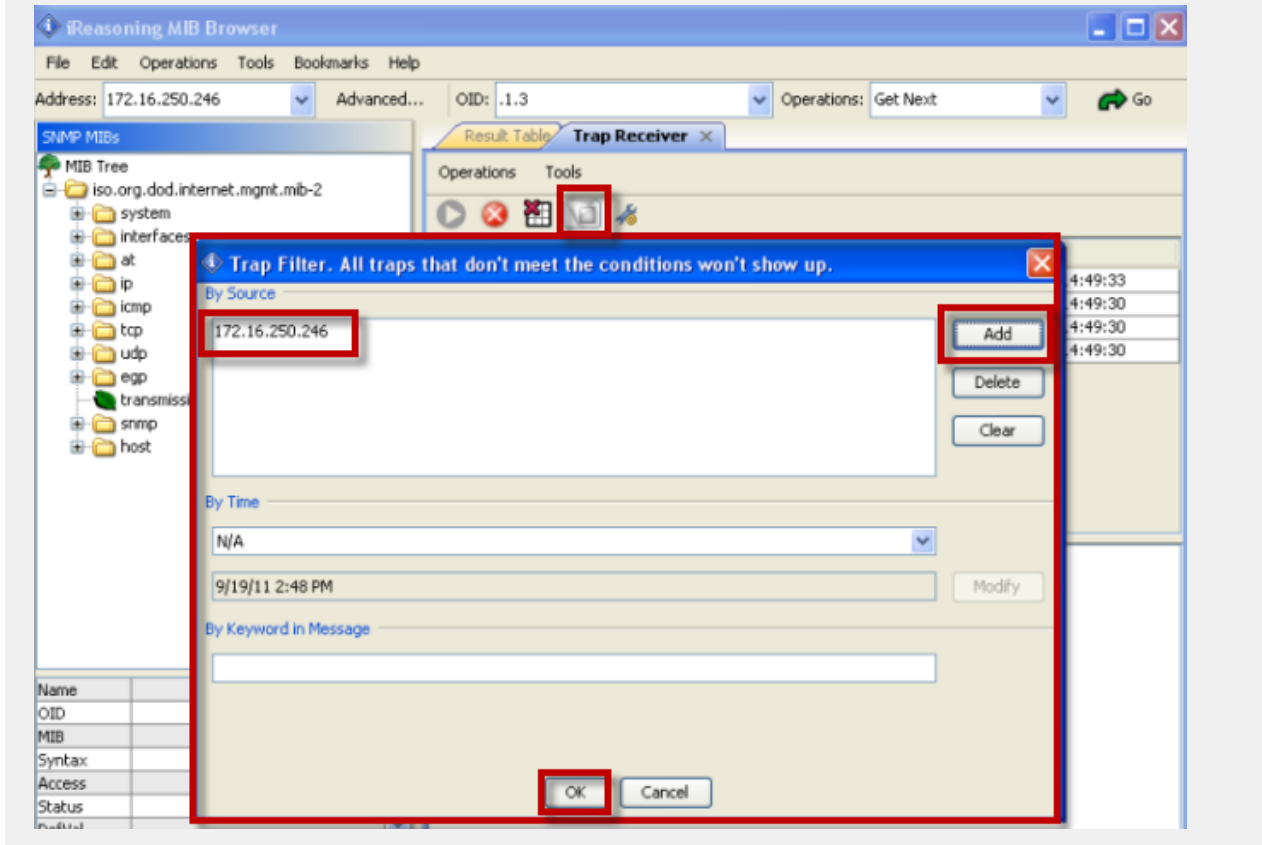
Traps include both alarms and events. If you want to receive Trap for alarms and events from the SBC Edge, perform the following steps (SBC 1000/2000 example is used here):

1. In the iReasoning MIB Browser, click the **Tools** menu item and select **Trap Receiver** as shown below:



2. Click **Trap Filter**, add the **IP address of Sonus SBC 1000/2000 node**, and click **OK**.

Figure 6: Trap Filter



3. Navigate to the **private** folder* navigation pane to see the relevant Sonus SBC 1000/2000 MIBs as shown below:

Figure 7: Private Folder Navigation Pane

The screenshot shows the iReasoning MIB Browser interface. The left pane displays a MIB Tree with a red box highlighting the 'private' folder and its sub-entries. The right pane shows a 'Trap Receiver' table with columns for Description, Source, and Time. Below the table, there are fields for Source, Timestamp, SNMP Ver, Trap OID, Variable Bindings, Name, Value, and another Name field.

MIB Tree (Private Folder):

- private
 - enterprises
 - net
 - ux
 - UXObjects
 - uxChassis
 - uxAlarmCfgTable
 - uxActAlarmTable
 - ipSystem
 - ipTelephony
 - callStatistics
 - uxCallRTTablesTable
 - uxCallRTTable
 - uxSGTable
 - uxSipServerTable
 - uxChannelStatusTable
 - uxDSPResourceTable
 - uxDSXOConfigTable
 - uxModuleTable
 - UXTraps

Trap Receiver Table:

Description	Source	Time
trapOID: .iso.org.dod.internet.private.enterprises.net.ux.UXTrap...	172.16.250.246	2011-09-19 14:50:33
trapOID: .iso.org.dod.internet.private.enterprises.net.ux.UXTrap...	172.16.250.246	2011-09-19 14:50:30
trapOID: .iso.org.dod.internet.private.enterprises.net.ux.UXTrap...	172.16.250.246	2011-09-19 14:50:30
trapOID: .iso.org.dod.internet.private.enterprises.net.ux.UXTrap...	172.16.250.246	2011-09-19 14:50:30
trapOID: .iso.org.dod.internet.private.enterprises.net.ux.UXTrap...	172.16.250.246	2011-09-19 14:49:30
trapOID: .iso.org.dod.internet.private.enterprises.net.ux.UXTrap...	172.16.250.246	2011-09-19 14:49:33
trapOID: .iso.org.dod.internet.private.enterprises.net.ux.UXTrap...	172.16.250.246	2011-09-19 14:49:30
trapOID: .iso.org.dod.internet.private.enterprises.net.ux.UXTrap...	172.16.250.246	2011-09-19 14:49:30

Trap Details:

Source: 172.16.250.246 Timestamp: 5 hours 1 minute 27 seconds SNMP Ver: ...
 Trap OID: .iso.org.dod.internet.private.enterprises.net.ux.UXTraps.uxAlmADReachable
 Variable Bindings:
 Name: .iso.org.dod.internet.mgmt.mib-2.system.sysUpTime.0
 Value: [TimeTicks] 5 hours 1 minute 27 seconds (1808755)
 Name: snmpTrapOID

