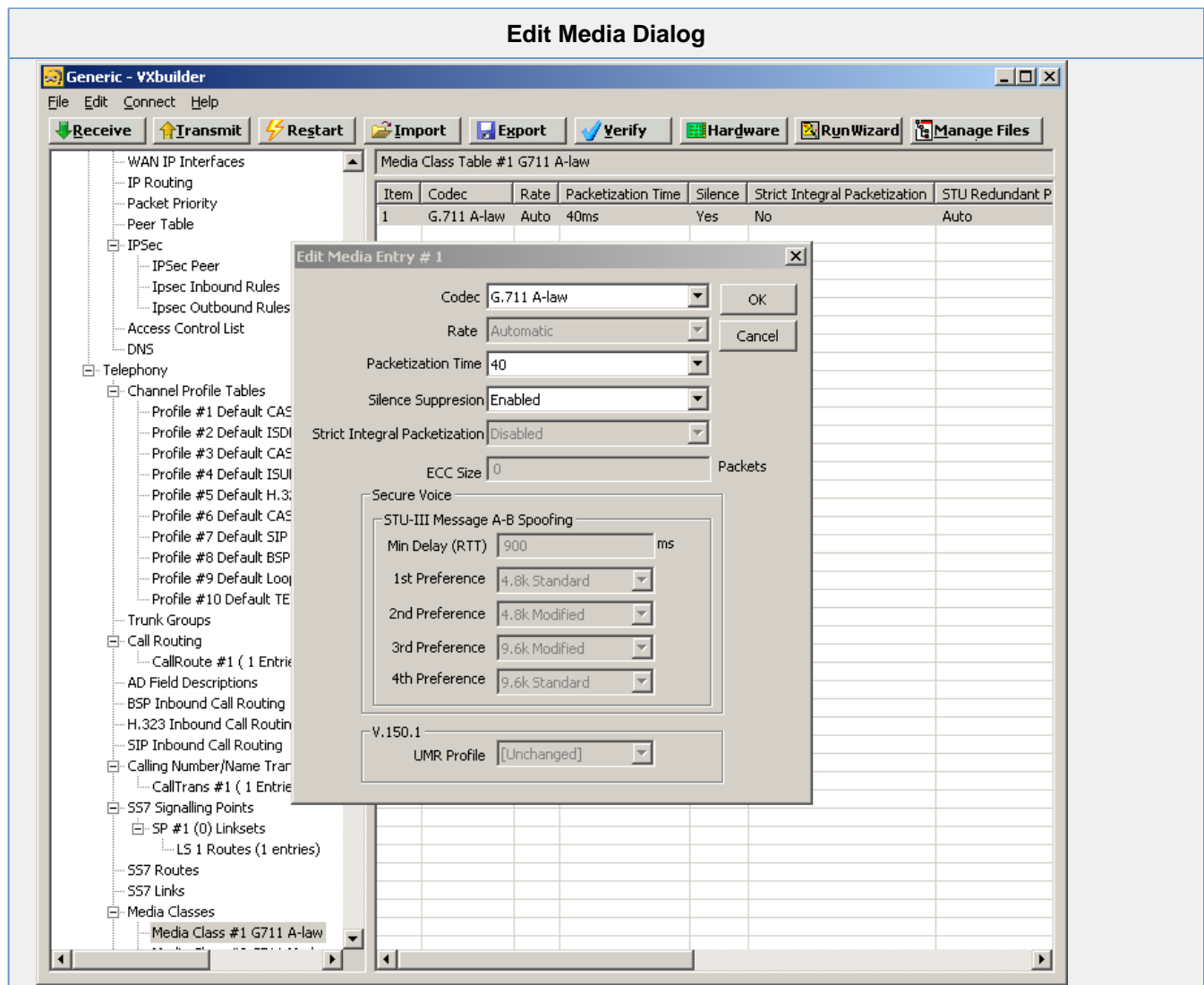


Media Class Table

View Media Class Table	Select the Telephony > Media Classes subdirectory for the VX node and view contents at the Media Class Table screen.
Add Media Class Table	Insert a new line in the Media Class Table screen, then double-click the line to present the Edit Media dialog box.
Modify Media Class Table	Double-click on table line in the Media Class Table screen to present the Edit Media dialog box.



Field	Description
Codec	Select a Codec from the drop-down list
Rate	The selected bit rate for Codecs that have multiple rates If this value is zero, the most common (or only) rate will be used.
Packetization Time	Specifies the interval in ms to send the RTP packets e.g. 40ms will produce 40ms packets regardless of silence packets Enable this option when a very smooth stream of packets is required e.g. satellite communications

Strict Integral Packetization	Use the drop-down menu to enable or disable strict integral packetization. When enabled, VX will generate RTP packets at strict integral 40ms intervals.
Silence	Use the drop-down menu to enable or disable Silence detection. When enabled, the VX removes detected silence from the transmitted data stream. Silence Detection optimizes bandwidth usage as it results in fewer bytes being transmitted. The resulting audio signal perceived by the human listener varies depending on the background noise of the senders' environment.
Inbound TxSize	The transmit packet size in milliseconds requested by the receiving node Setting this to a specific packet size causes the codec negotiation to negotiate the requested packet size. Zero sets this to automatic.
Inbound RxSize	The receive packet size in milliseconds requested by the node Zero sets this to automatic. Setting this to a specific packet size causes the codec negotiation to negotiate the requested packet size.
Outbound TxSize	The outbound transmit packet size Zero sets this to automatically determine the size of the outbound transmit packet. Setting this to a specific packet size causes the codec negotiation to negotiate the requested packet size.
Outbound RxSize	The outbound receive packet size Zero sets this to automatic. Setting this to a specific packet size causes the codec negotiation to negotiate the requested packet size.
Secure Voice ECC Size	Configures the number of error correcting packets to add Each error correcting packet is a duplicate so this will increase the amount of bandwidth required
STU-III Message AB Spoofing	
Min Delay (RTT)	The minimum delay that is needed for the AB spoofing to activate A call with a RTD over this value will use the configured values instead of negotiating the terminal capabilities end to end Default = 900ms
1st through 4th Preference	Set the 1st through the 4th preferences.
V.150 Profile	Select the desired V.150.1 profile from the drop-down menu.