

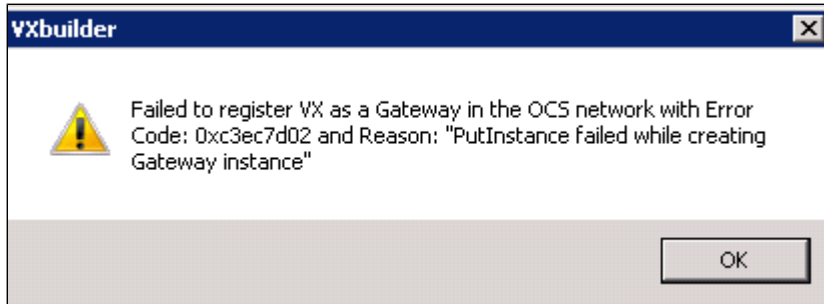
Troubleshooting Additional VXe Gateways

If calls cease to complete after adding an additional VXe gateway, and the error:

```
Peer certificate subject name is not configured on the server interface
```

appears in the Event Log. Remove the gateway from the OCS Routes Tab (Forest [right click],properties|Voice Properties) , stop the FE service, re-add the VX gateway as an OCS route, and restart the FE service.

If the following error appears when you attempt to add an additional VXe via the VXbuilder wizard:



1. Export the config to a text file from VXbuilder
2. Remove the gruu block from the config
3. Import into VXbuilder
4. Transmit the modified config to VX
5. Then try to re-run the wizard

GRUU block

```
OCSGw
OCSGw.1
OCSGw.1.OCSGRUU sip:vxgw2.vx.net@vx.net;gruu;opaque=srvr:Gateway:5fKaBxCKAEubHaBIbaco6wAA
OCSGw.1.OCSGwOCSPool
OCSGw.1.OCSGwOCSPool.1
OCSGw.1.OCSGwOCSPool.1.Server ocs.vx.net
OCSGw.1.OCSGwOCSPool.Server ocs.vx.net
OCSGw.1.OCSGwQOE
OCSGw.1.OCSGwQOE.1
OCSGw.1.OCSGwQOE.1.OCSGRUU sip:ocs.vx.net@vx.net;gruu;opaque=srvr:QoS:BTLPwIXw9EeSVWm_Fu4GmAAA
OCSGw.1.OCSGwQOE.1.Port 5069
OCSGw.1.OCSGwQOE.1.Server ocs.vx.net
OCSGw.1.OCSGwQOE.OCSGRUU sip:ocs.vx.net@vx.net;gruu;opaque=srvr:QoS:BTLPwIXw9EeSVWm_Fu4GmAAA
OCSGw.1.OCSGwQOE.Port 5069
OCSGw.1.OCSGwQOE.Server ocs.vx.net
```