

# Installing SBC SWe Lite on KVM Hypervisor

In this section:

- Prerequisites
- Create New Virtual Machine
- Customize Configuration
  - Add the Virtual Disks
  - Modify Network Interface Device Model
  - Add Virtual Network Interfaces
- Finalize Installation
- Complete Initial Setup
- License Installation
  - Trial License Installation
  - Production License Installation

## Prerequisites

Refer to [Downloading the SBC SWe Lite Package](#) prior to performing this procedure.

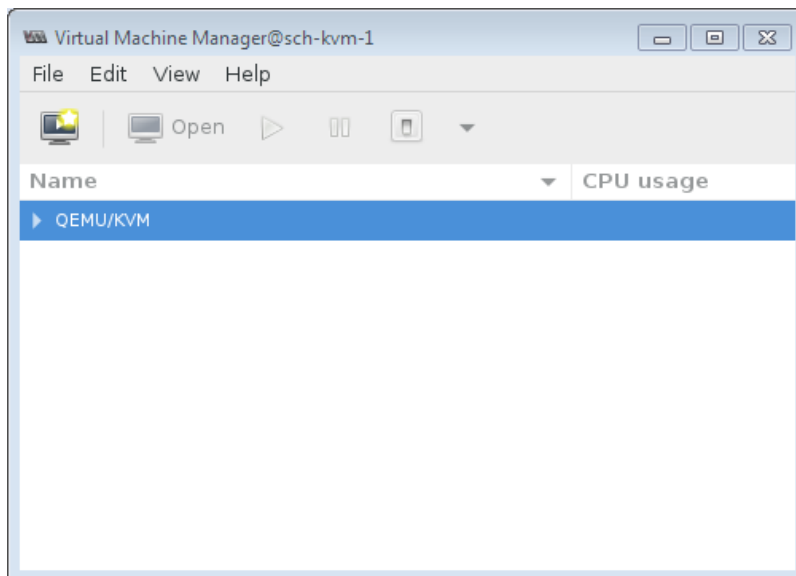
### Note

The SBC SWe Lite supports one Network Management interface and up to four Network Media interfaces. The minimal networking configuration (one management and one media interface) requires two bridge interfaces configured on Hyper Visor host. To support maximum 1+4 configuration, Hyper Visor host must have five bridge interfaces configured prior to the Virtual Machine (VM) installation.

## Create New Virtual Machine

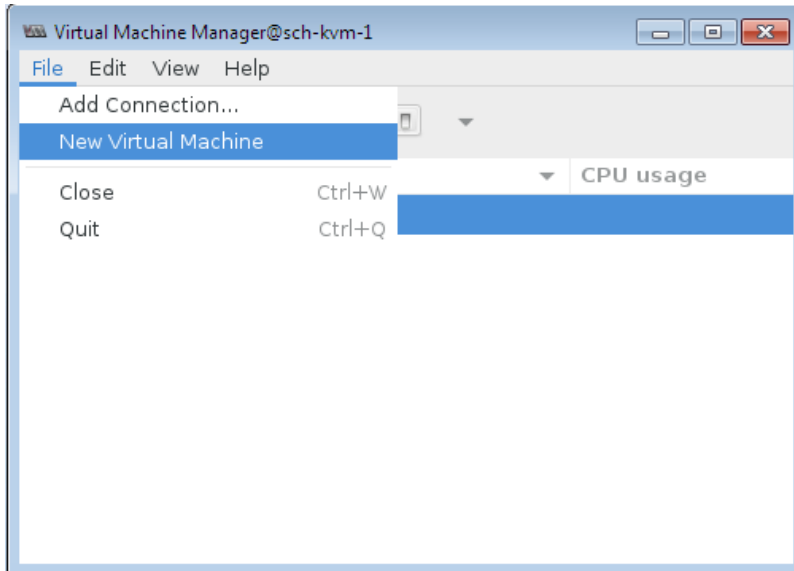
1. Start the Virtual Machine Manager.

**Figure 1:** Start Virtual Machine



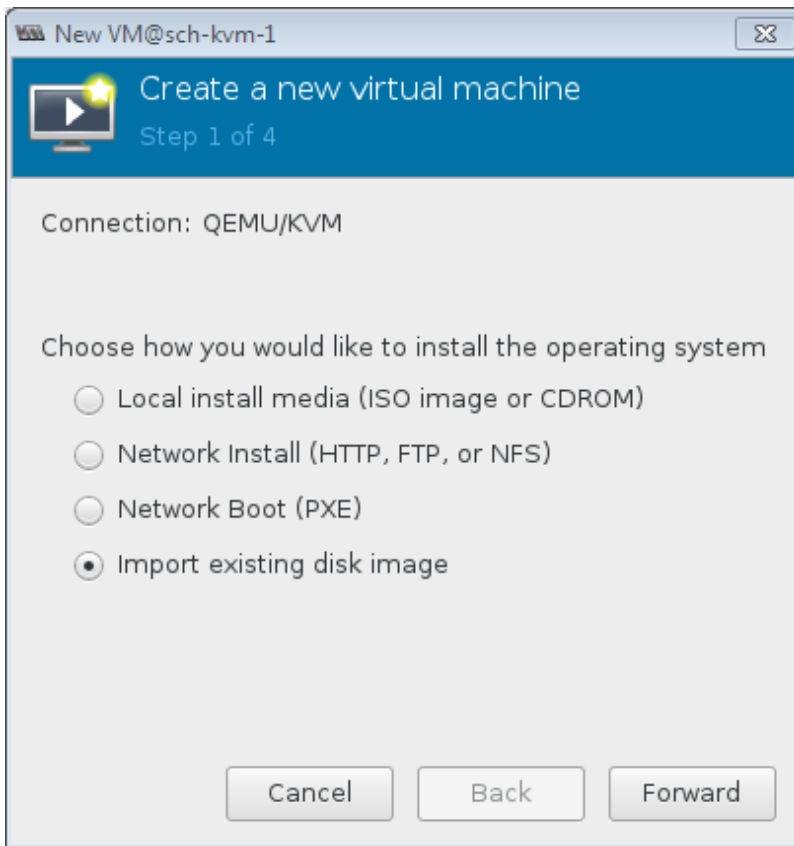
2. Select **New Virtual Machine** from the File drop-down menu.

**Figure 2:** New Virtual Machine



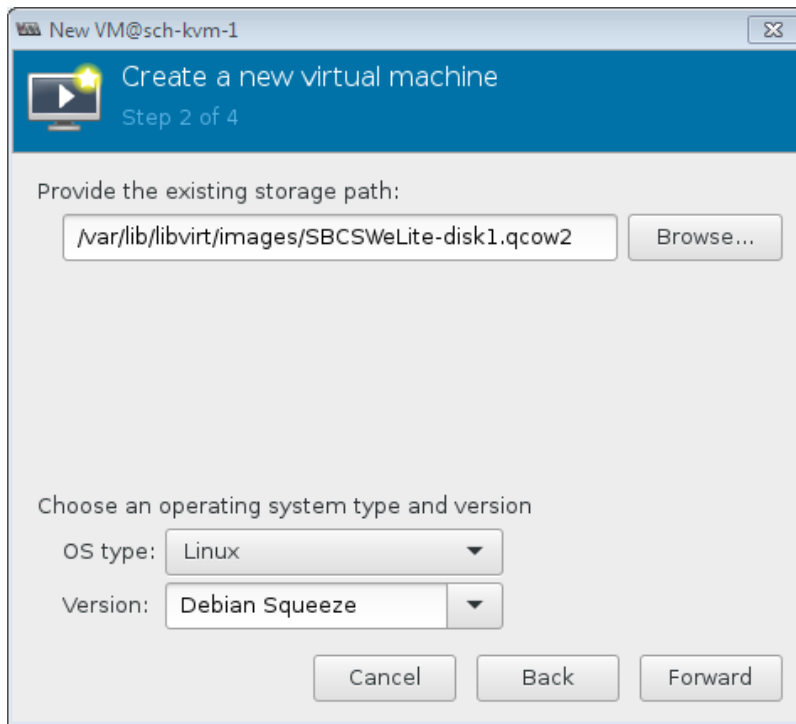
3. From the Create New Virtual Machine dialog, select **Import existing disk image** and click **Forward**.

**Figure 3:** Create New Virtual Machine



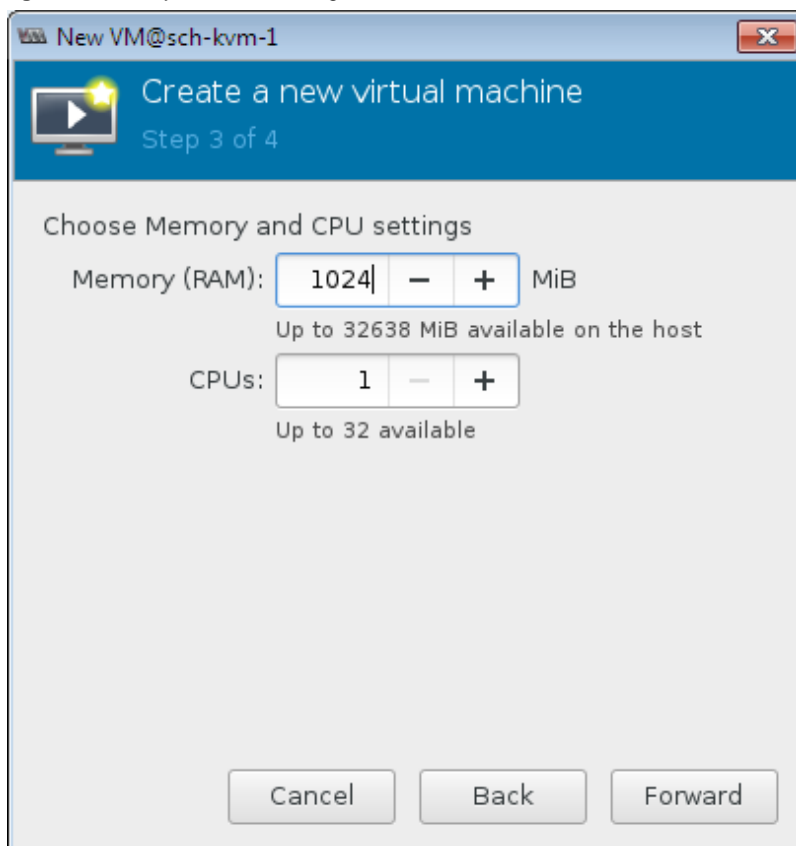
4. Select **Linux** from the OS type drop-down menu.
5. Select **Debian Squeeze** from the Version drop-down menu .
6. Click **Browse** and navigate to the location of the disk image.
7. From the Choose Storage Volume dialog, select file **SBCSWeLite-disk1.qcow2**, then click **Choose Volume**.
8. Click **Forward**.

**Figure 4:** OS Type and Version



9. Set **Memory (RAM)** field to **1024** and **CPUs** field to **1**, and click **Forward**.

**Figure 5:** Memory and CPU Settings

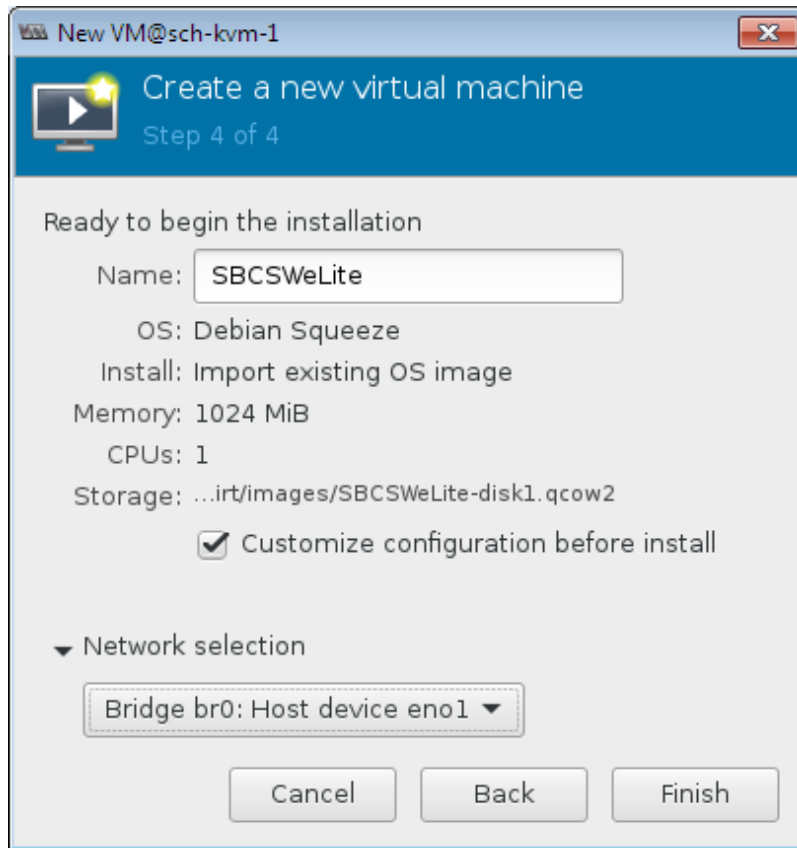


10. Enter the name of your new VM in the Name field.
11. Select the **Customize configuration before install** option.
12. From the New VM dialog, select the applicable network from the Network selection drop-down menu, and click **Finish**.

 **Note**

This network is used for Management Interface.

**Figure 6:** Finalizing Create New Virtual Machine

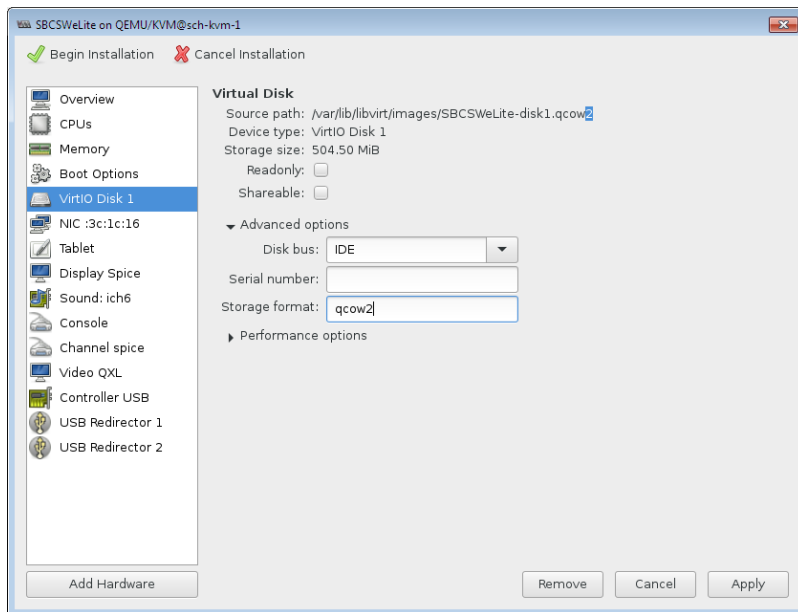


## Customize Configuration

### Add the Virtual Disks

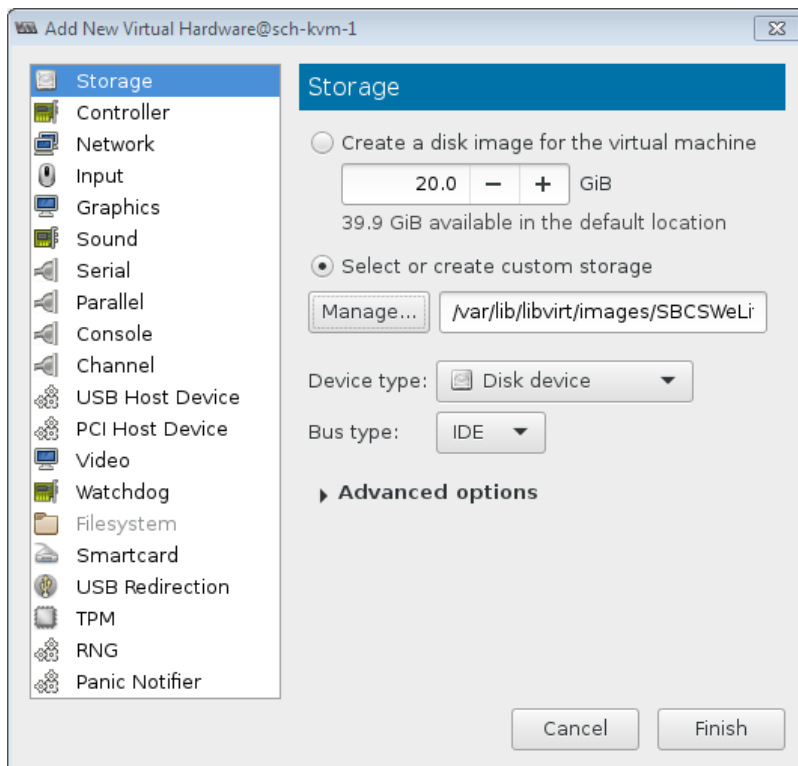
1. In the new pop-up window, select **Disk 1 (VirtIO or IDE)**.
2. Expand **Advanced options** and select **IDE** from the **Disk bus** drop-down menu.

**Figure 7:** Adding Hardware



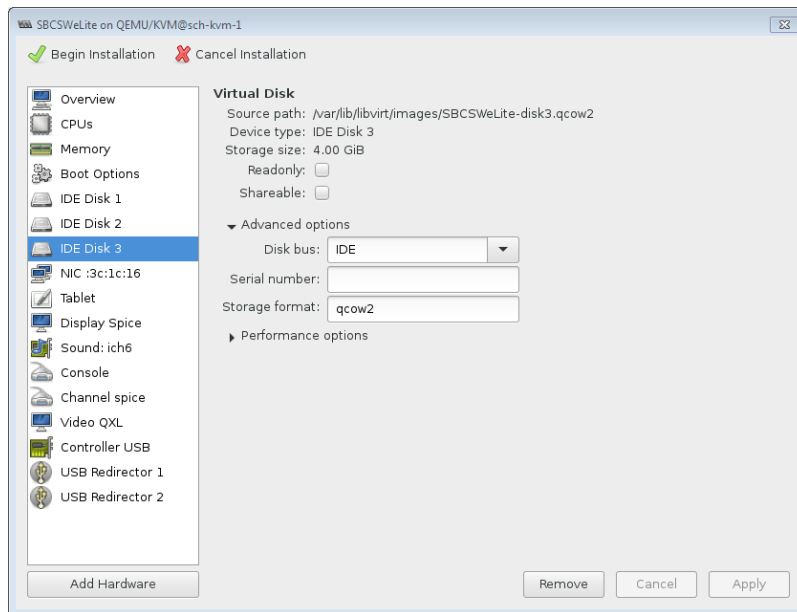
3. Click **Add Hardware**.
4. Select **Storage**.
5. Select **Select or create custom storage**.
6. Navigate to file **SBCSWeLite disk2.qcow2**.
7. Select **IDE** from the **Bus Type** drop-down menu, and click **Finish**.

**Figure 8:** Managing Storage



8. Repeat steps 4-6 for **IDE Disk 3**.

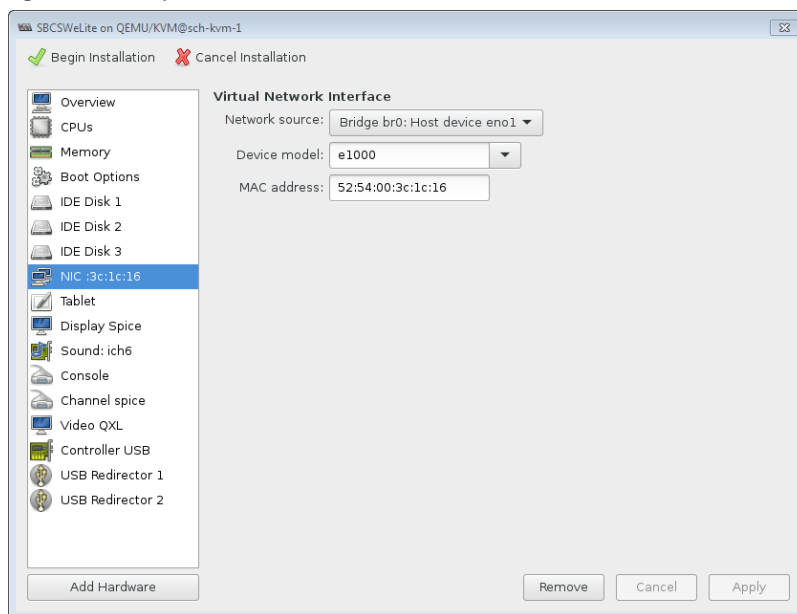
**Figure 9:** Repeat for Disk Three



## Modify Network Interface Device Model

1. Select **NIC**.
2. Select **e1000** from the Device model drop-down menu, then click **Apply**.

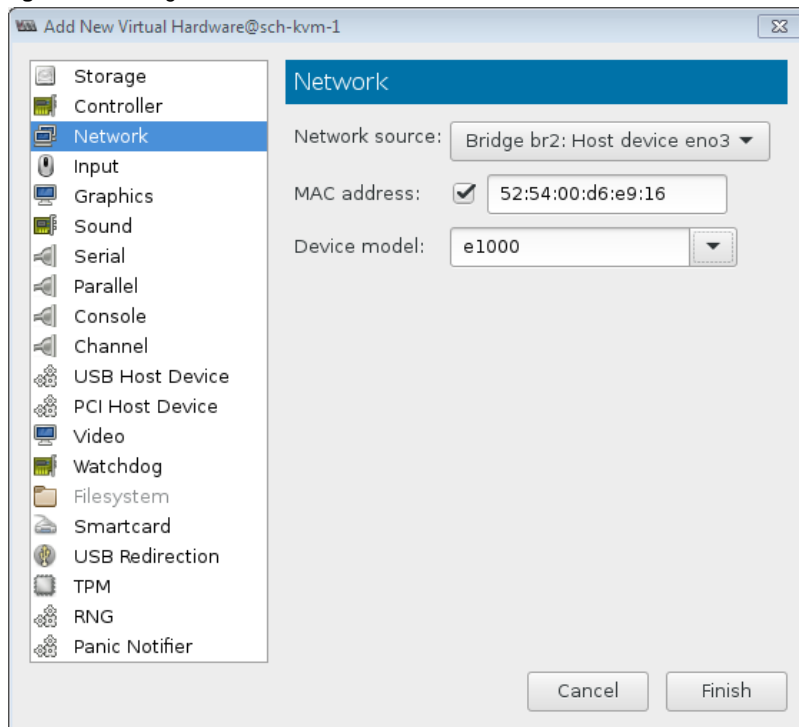
**Figure 10:** Modify Virtual Network Interface



## Add Virtual Network Interfaces

1. Click **Add Hardware**.
2. From the Add New Virtual Hardware dialog, select **Network**.
3. Select the desired Bridge id from the Network source drop-down menu.
4. Select **e1000** from the Device model drop-down menu, and then click **Finish**.
5. Repeat steps 1-4 for additional Network Interfaces.

**Figure 11:** Adding Network Interfaces



**Note**

The SBC SWe Lite Virtual Machine requires five Virtual Network Interfaces configured, regardless of the actual number of Networks used by the guest VM.



**Note**

The first Virtual NIC must use a dedicated bridge (Network source). The Network source can then be used to configure the four remaining Virtual NICs.

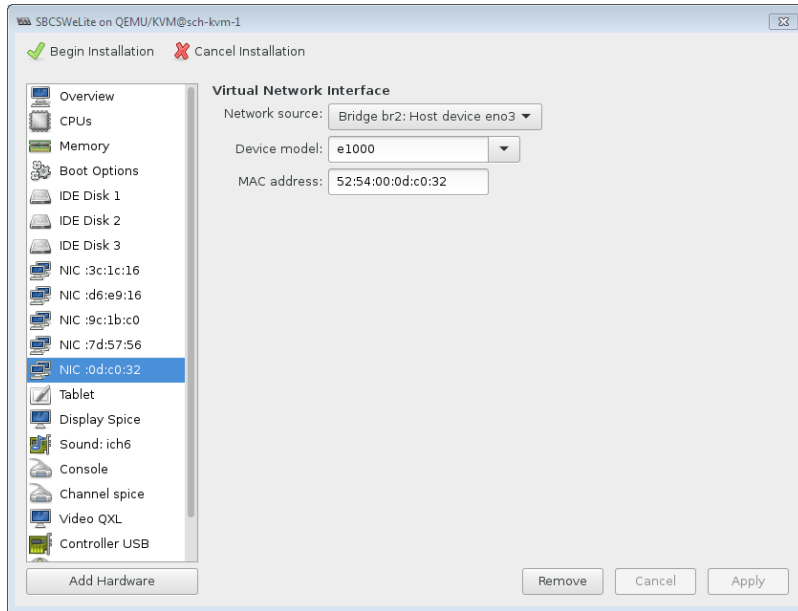


Sonus recommends that all customers review and, if necessary, optimize their Network Interface configurations before proceeding. Failure to do so could lead to interface mapping issues. See [Mapping Network Interfaces](#) and then return to this section.

## Finalize Installation

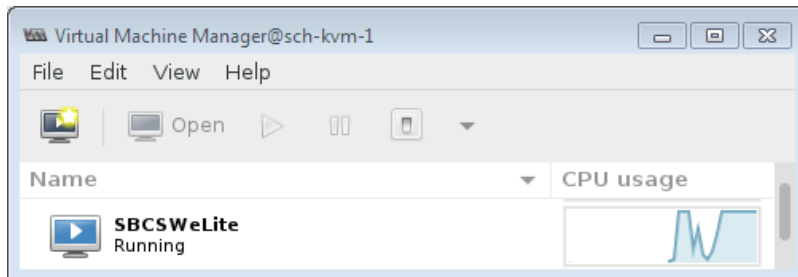
1. From the Virtual Machine dialog, click **Begin installation**.

**Figure 12:** Begin Final Installation



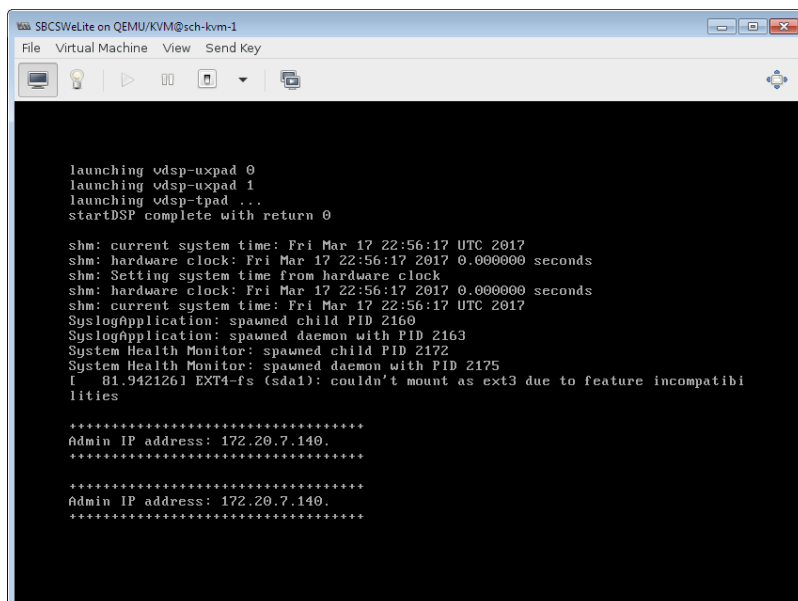
**Note**  
The configured VM starts automatically as shown below.

Figure 13: SBC SWe Lite Running



2. Click the monitor icon in the header to open the VM console.

Figure 14: Open VM Console





## Complete Initial Setup



Proceed to [SBC SWe Lite Initial Setup](#). After setup is complete, proceed to License Installation.

## License Installation

### Trial License Installation

If you are installing an SBC SWe Lite for a trial or demonstration deployment, proceed to [Obtaining and Installing a SWe Lite Trial License](#).

### Production License Installation

If you are installing an SBC SWe Lite instance to carry live enterprise traffic, proceed to [Obtaining and Installing a SWe Lite License](#).

