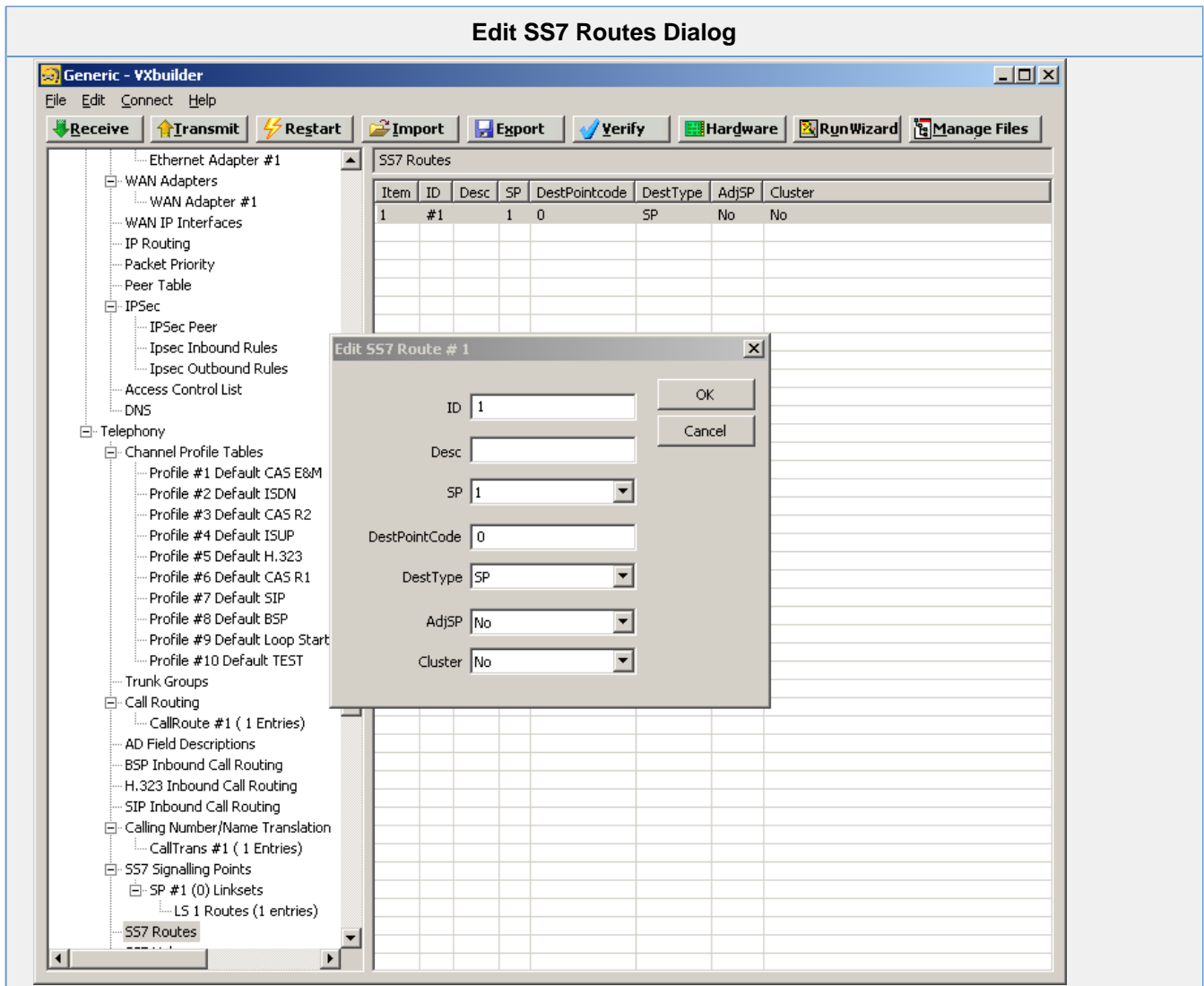


# SS7 Routes

<b>View SS7 Routes</b>	Select the <b>Telephony &gt; SS7 Routes</b> subdirectory for the VX node and view contents at the <b>SS7 Routes</b> screen.
<b>Add SS7 Routes</b>	Insert a new line in the <b>SS7 Routes</b> screen, then double-click the line to present the <b>Edit SS7 Routes</b> dialog box.
<b>Modify SS7 Routes</b>	Double-click on table line in the <b>SS7 Routes</b> screen to present the <b>Edit SS7 Routes</b> dialog box.



Field	Description
<b>ID</b>	Route identifier for this route
<b>Description</b>	Enter an optional text description
<b>SP</b>	The Signalling Point that this route relates to
<b>DestPointCode</b>	The destination of this route
<b>Destination Type</b>	SP (Signalling Point) or STP (Signalling Transfer Point)
<b>AdjSP</b>	Specify yes if the adjacent node is a signalling point, no if it is not

<b>Cluster</b>	Specify yes if the adjacent node is part of a cluster or no if it is not
----------------	--